



City of Tampa
Jane Castor, Mayor

Contract Administration
Michael W. Chucran, Director
306 East Jackson Street, 4N
Tampa, FL 33602

Office (813) 274-8116
Fax: (813) 274-7368

ADDENDUM 2

Via E-Mail

DATE: April 13, 2022

Contract: 22-C-00005; Executive Park Gravity Sewer Replacement

Bidders on the above referenced project are hereby notified that the following addendum is made to the Contract Documents. BIDS TO BE SUBMITTED SHALL CONFORM TO THIS NOTICE.

Item 1: Replace Proposal page P-2 with the attached Proposal page P-2R.

Item 2: Add the following to the Specific Provisions:

SP-145 Density and Asphalt Testing

In accordance with the provisions of Workmanship and Materials Section 16 – Restoration of Street Pavements, subsection W-16.10, all Density and Asphalt testing shall be tested and approved by a licensed private testing laboratory prior to final acceptance of the project.

All costs associated with Density and Asphalt testing shall be included in the various contract item unit prices, and no separate payment will be made therefor.

Item 3: Contract Item 0700 Series, second paragraph, beginning in the tenth line, Delete “maintenance of traffic, including maintaining access across driveways along the line of the work,”

Item 4: Contract Item 1005 Series, second paragraph, in the tenth line, Delete “maintenance of traffic, including maintaining access across driveways along the line of the work,”

Item 5: Insert the attached Contract Items 101-Mobilization, 0131- Unsuitable Soil Disposal, 9000 – Sewage Bypass Pumping, and 9999 – Maintenance of Traffic.

Item 6: Workmanship and Materials, Replace W-2.14 Inspection and Testing of Backfilling with the following:

W-2.14 Inspection and Testing of Backfilling

All backfill shall be subject to test by an approved third-party lab at the expense of the Contractor.

Item 7: Workmanship and Materials, W-16.10 Hot Bituminous Mixtures (Section 330) Type S Asphaltic Concrete (Section 331), 330-10.3.1 Density Control Nuclear Method, first paragraph, beginning on the eighth line, Delete “and determined by the City laboratory performing all acceptance testing”

Item 8: Workmanship and Materials, W-16.10 Hot Bituminous Mixtures (Section 330) Type S Asphaltic Concrete (Section 331), 330-10.3.3 Lots, third paragraph, third line, Delete “performed by the City laboratory performing acceptance testing”

Item 9: Workmanship and Materials, W-16.10 Hot Bituminous Mixtures (Section 330) Type S Asphaltic Concrete (Section 331), 331-5 Acceptance of the Mixture, 331-5.1 General, second paragraph, beginning in the third line, Delete “the City material testing laboratory or by”

Item 10: Workmanship and Materials, W-16.10 Hot Bituminous Mixtures (Section 330) Type S Asphaltic Concrete (Section 331), 331-5.2 Acceptance Procedures, first paragraph, second line, Delete “City”

Item 11: Workmanship and Materials, W-16.10 Hot Bituminous Mixtures (Section 330) Type S Asphaltic Concrete (Section 331), 331-5.2 Acceptance Procedures, second paragraph, (4), Delete “City”

Item 12: Replace plan sheet nos. C2.4 and C2.5 with the attached plans sheet nos. C2.4 and C2.5.

All other provisions of the Contract Documents and Specifications not in conflict with this Addendum shall remain in full force and effect. Questions are to be e-mailed to ContractAdministration@tampagov.net.



Jim Greiner, P.E., Contract Management Supervisor

Executive Park Gravity Sewer Replacement
Contract: 22-C-00005

Item No.	Item	Quantity	Unit	Unit Price in Words	Unit Price	Total
100	Contingency	1	1		100,000.00	100,000.00
101	Mobilization	1	Ea			
0130	Additional Select Sand Fill	100	C.Y.			
131	Unsuitable Soil Disposal	100	C.Y.			
0140	Additional Select Crushed Stone Material	50	C.Y.			
0520-1	Standard Concrete Curb or Curb and Gutter	85	L.F.			
0708.13	8-Inch Diameter, SDR-35, PVC Pipe Sewer in cuts 6 to 13 ft.	32	L.F.			
0710.13	10-Inch Diameter, SDR-35, PVC Pipe Sewer in cuts 6 to 13 ft.	1860	L.F.			
1005-10	10" PVC C900 Certa-Lock Gravity, by Close Tolerance HDD, any length	673	L.F.			
1706	6-Inch Diameter PVC Pipe House Lateral (SDR-35)	408	L.F.			
2710	10" x 6" Dia SDR-35 Wye	11	Ea			
4000	Precast Concrete Standard or Doghouse Manhole Base	10	Ea			
4001	Conflict MH at Station 24+35.1	1	EA			
4100	Precast Concrete Manhole Barrel	57	L.F.			
4200	Precast Concrete Manhole Cone	10	Ea			
4600	Cast Iron Manhole Frame and Cover	11	Ea			
4660	6-Inch Diameter PVC Cleanout and Cover	7	Ea			
4700.2	2-inch Diameter PVC (SCH 80) Inside Drop	10	L.F.			
4700.6	6-inch Diameter PVC Pipe Manhole Outside Drop Connection	6	L.F.			
4700.8	8-inch Diameter PVC Pipe Manhole Outside Drop Connection	16	L.F.			
4900	Connect to Existing Manhole, no existing pipe	4	Ea			
5051	Filling of Existing Sanitary Sewers	58	C.Y.			
8000	Permanent Pavement Base (Crushed Concrete)	792	C.Y.			
8100.1	Permanent Asphalt Pavement Type Superpave (including testing)	742	ton			
8900.2	Bahia Sod	110	S.Y.			
9000	Sewage Bypass Pumping	1	LS			
9300	Sawcut Asphalt or Concrete Pavement, Driveways or Sidewalks	4272	L.F.			
9400	Mill 1" Existing Asphalt Pavement, any quantity	6233	S.Y.			
9900	Maintenance of Traffic	1	Ea			
TOTAL						

CONTRACT ITEM 101 - MOBILIZATION

The Contractor shall furnish all equipment, labor, and materials necessary to mobilize his forces as necessary to perform all the work under this Contract.

Work under this section includes bonding and insurance; transportation, and otherwise movement of all personnel, equipment, supplies, materials and incidentals to the project site; establishment of temporary offices, buildings, safety equipment and first aid supplies, sanitary and other facilities; and all other preconstruction expense necessary for the start of the work, excluding the cost of construction materials, to be constructed under this Contract as shown on the Plans and directed by the Engineer.

Payment for Mobilization will be made at the appropriate Contract Lump Sum Price.

CONTRACT ITEM 0131 – UNSUITABLE SOIL DISPOSAL

The Contractor shall furnish all labor, materials, fees, and equipment to transport and dispose of unsuitable soil as ordered by the Engineer in writing and not specifically included under other Contract Items. The contractor shall be responsible for hauling and disposal of the materials and compliance to all applicable regulations.

Payment for Disposal of unsuitable soil material will be made at the appropriate Contract Item Unit Price per cubic yard of removed.

CONTRACT ITEM 9000 - SEWAGE BYPASS PUMPING

The Contractor shall furnish all materials, labor, equipment and services to pump sewage during modifications to existing sewers and appurtenances.

The proposed method and facilities for pumping shall be subject to the prior approval of the Engineer. Adequate standby facilities shall be provided to ensure that pumping will not be interrupted in the event of power failure or mechanical breakdown. Facilities for sewage pumping shall be of sufficient capacity to handle existing flows plus additional flow that may occur during periods of rainfall. Precautions must be taken to make certain that sewer flow control operations do not cause flooding or damage to public or private property being served by the sewers involved.

The work includes all incidental excavation, selected fill material, sumps, flumes, dams, plugs, bulkheads, pumping and power equipment, fuel, labor, maintenance and repair of equipment, temporary or

permanent electrical service, discharge piping, timber, sheeting, shoring, bracing, fittings, valves, other necessary facilities to divert sewage by pumping around a construction area, and removal of all sewage pumping facilities, all complete and in place.

Contractor shall utilize a wastewater bypass system as necessary to complete this project. The majority of the proposed sewer pipe is designed adjacent and parallel to the existing gravity sewer with the intent that existing wastewater flow can remain in the existing sewer while the new sewer system is constructed. Bypass pumping will be required for the pumping station's influent pipe replacement and other locations as deemed necessary by the contractor. The bypass pumping system shall be in accordance with Specific Provision SP-64B Bypass Pumping (Linework) and the bypass pumps shall be sized to deliver a peak flow of 350 gpm.

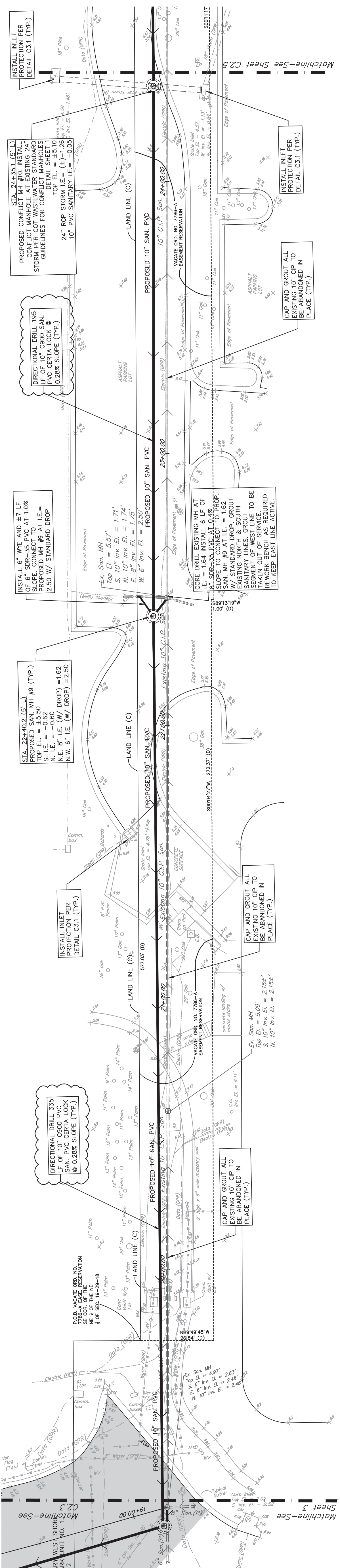
Payment for Bypass Pumping will be made at the Contract Unit price per Bypass Pumping utilized for the entire project as a Lump Sum (LS). Therefore, if the contractor utilizes only 1 or several bypass setups for the project, the contractor will only be paid the bypass item lump sum cost for the entire project.

CONTRACT ITEM 9999 - MAINTENANCE OF TRAFFIC

The Contractor shall furnish all materials, equipment, and labor to establish and maintain all traffic maintenance devices and personnel for the lane closure as shown on the Plans, specified, and directed by the Engineer.

The work includes all striping requirements as described in Specific Provision 24, installation of all signs, barricades, lights and flagmen, additional earth excavation, selected fill, temporary wearing surface, temporary bridges, and all appurtenant work complete in place as necessary to control traffic and provide for safety to the public, all in compliance with the Manual on Uniform Traffic Control Devices, "MUTCD," with subsequent revisions and additions, and to the satisfaction of the Engineer.

Payment for Maintenance of Traffic will be made at the appropriate Contract Lump Sum Price.

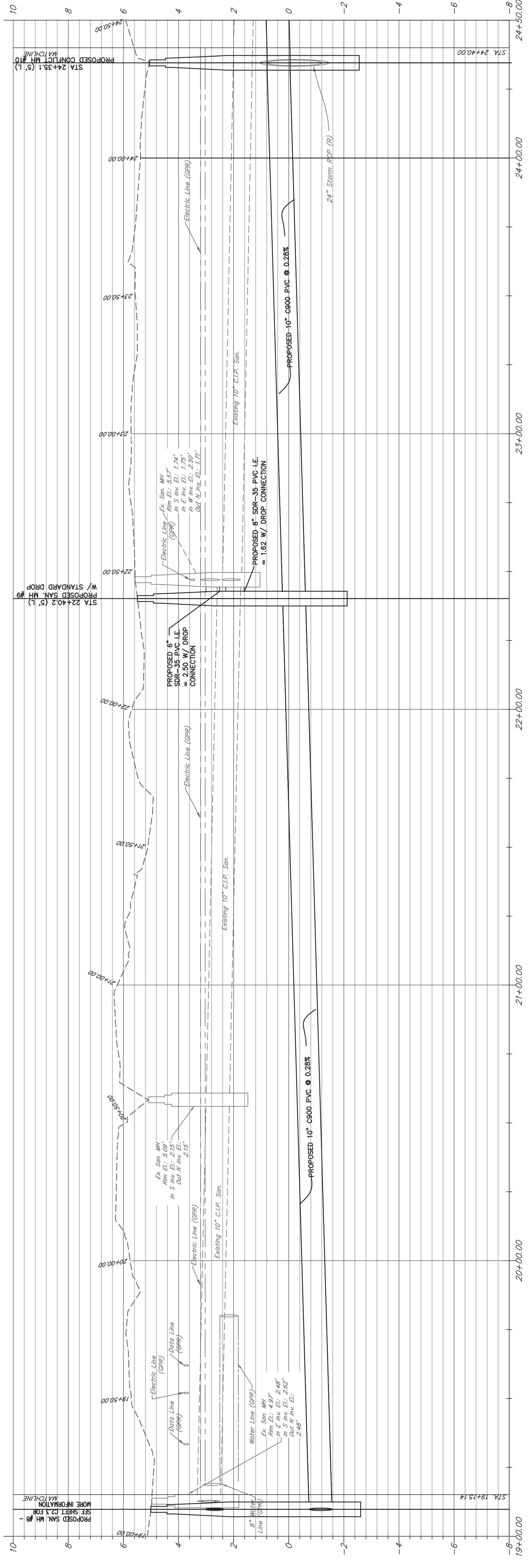


PLAN VIEW
Horizontal Scale: 1" = 20'

- LEGEND:**
- (D) Description Data
 - (M) Measured Data
 - (R) Reported Data
 - FIP Found Iron Pipe
 - FIPR Found Iron Pipe Rod
 - FIPNR Found Iron Rod
 - FMD Found Metal Disk
 - FND Found Nail & Disk
 - IR Iron Rod
 - SIR Set 2" Iron Rod & LB 3868 Cap
 - SN Nail & Disk #3141
 - SN&D No Identification
 - NO I.D. No Identification
 - W.C. Witness Corner
 - BFP Backflow Preventer
 - Bldg. Building
 - Boil. Boiler
 - Com. Communication
 - Conc. Concrete
 - C.I.P. Concrete Inlet Pipe
 - E.B. Electrical Box
 - E.L. Elevation
 - Elec. Electric
 - F.E. Floor Elevation
 - F.O. Fiber Optic
 - GA Guy Anchor
 - HC Handicapped
 - ICV Irrigation Control Valve
 - Invert
 - Masonry End Section
 - M.S. Manhole
 - M.I.P. Metal Inlet Pipe
 - O/A Overall
 - OHW Overhead Utility Lines
 - P.C. Polyvinyl Chloride Pipe
 - PVC Polyvinyl Chloride Pipe
 - RCP Reinforced Concrete Pipe
 - Rel. Retaining
 - San. Sanitary
 - San. Sanitary
 - Slg. Signal
 - St. Street
 - St. Street
 - T.O.B. Top of Bank
 - Tr. Traffic
 - Trans. Transformer
 - UP. Utility Pole
 - Utl. Utility
 - Ver. Vertical
 - W. Water
 - WV Water Valve
 - w.l.p. w/ Light Pole

NOTES:

- SANITARY SERVICE LATERAL LOCATIONS OBTAINED FROM RECORD AS-BUILT DRAWINGS AND T.V. INSPECTION VIDEO. CONTRACTOR TO FIELD VERIFY LATERAL LOCATIONS AND VERIFY ALL EXISTING UTILITIES ARE SHOWN FROM THE BEST INFORMATION AVAILABLE. UNDERGROUND UTILITY INFORMATION SHOWN IS FROM GPR INFORMATION COLLECTED ON 07/28/21 AND AS-BUILT RECORD DRAWINGS SUPPLIED BY UTILITY PROVIDERS. PRIOR TO CONSTRUCTION, CONTRACTOR TO VERIFY HORIZONTAL AND VERTICAL LOCATION OF ALL UTILITIES.
-



PROFILE VIEW
Horizontal Scale: 1" = 20'
Vertical Scale: 1" = 2'

REVISIONS

BY	DATE	DESCRIPTION
CIV	1/13/22	10\"/>

MILLS and ASSOCIATES, INC.
CONSULTING ENGINEERS & LAND SURVEYORS
3242 HENDERSON BOULEVARD • SUITE 300
TAMPA, FLORIDA 33609-3056
TELEPHONE: (813) 876-5869

CITY OF TAMPA WASTE WATER DEPARTMENT

DESIGNED BY: CIV
CHECKED BY: LEW
SCALE: 1" = 20'

DATE: 1/13/22
DATE: 1/13/22
DATE: 1/13/22

signed by
Lawrence E. Mills
DATE: 2022.03.22
P.E. # 15335-03
F.S. REG. # 381 - 08.01.3868
STATE OF FLORIDA

PROJECT: EXECUTIVE PARK GRAVITY SEWER REPLACEMENT

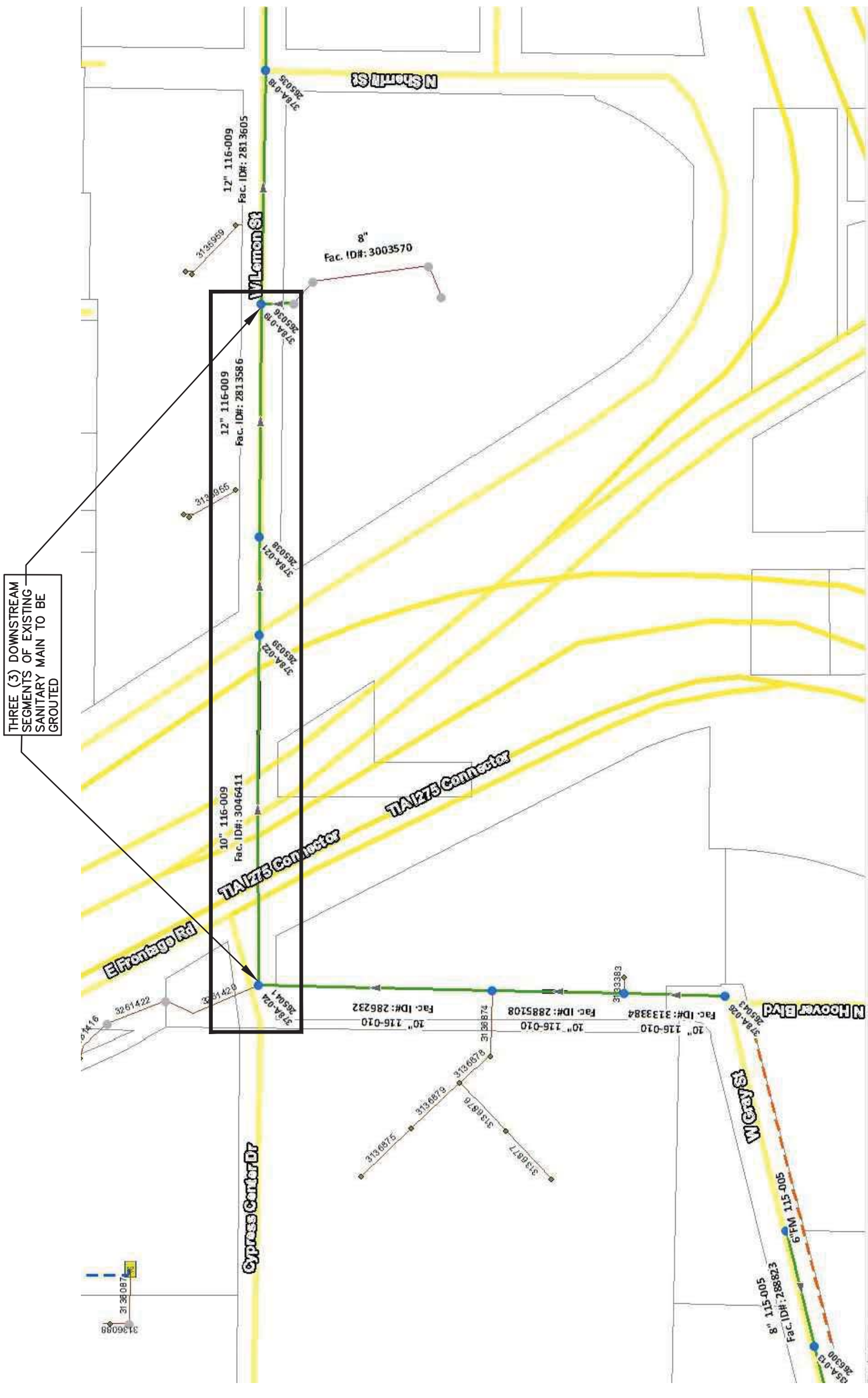
100% CONSTRUCTION DRAWINGS - 01/13/22

SHEET: C2.4

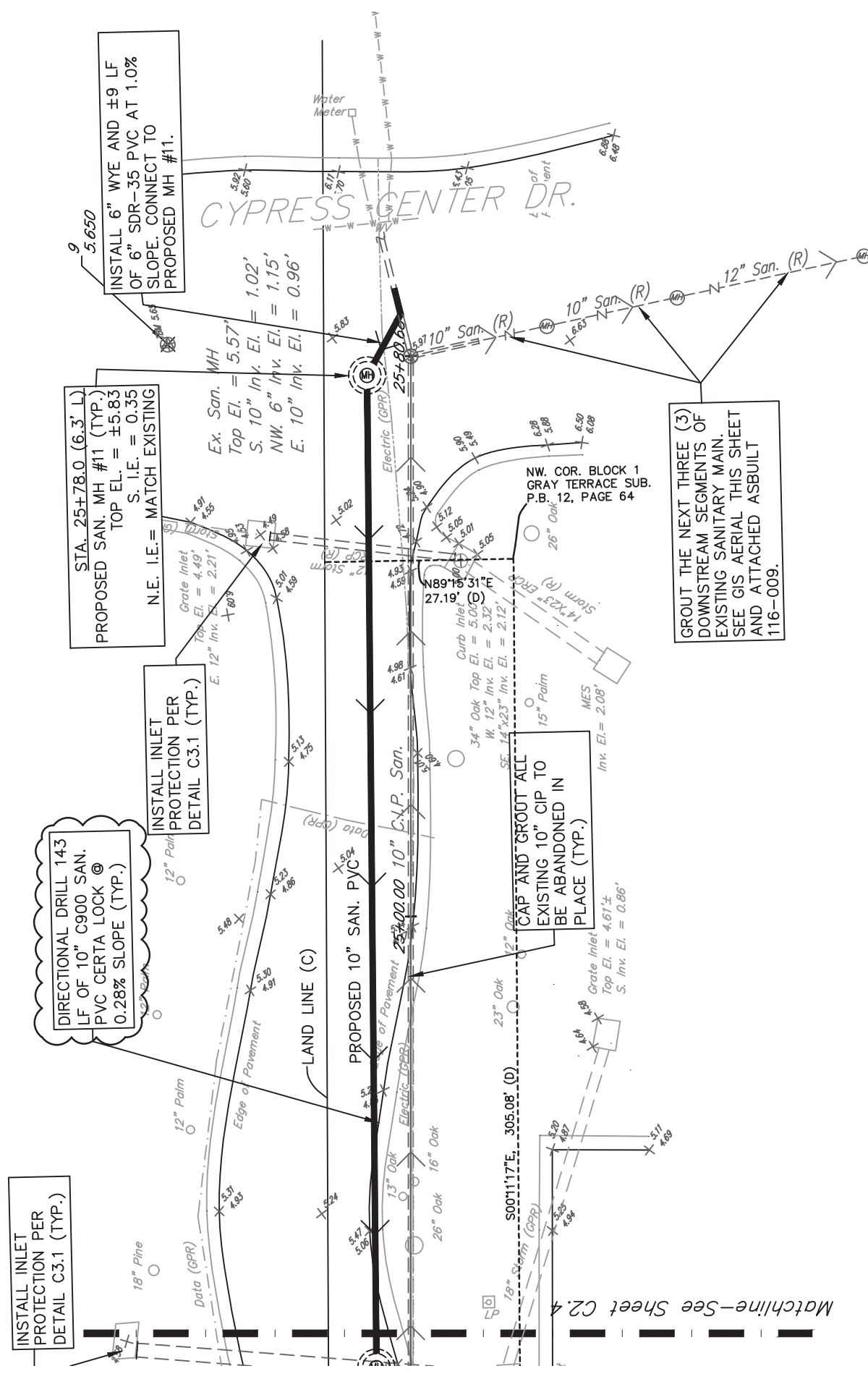
JOB NO.: 21-013.001

STA. 19+15.14 TO 24+40.00

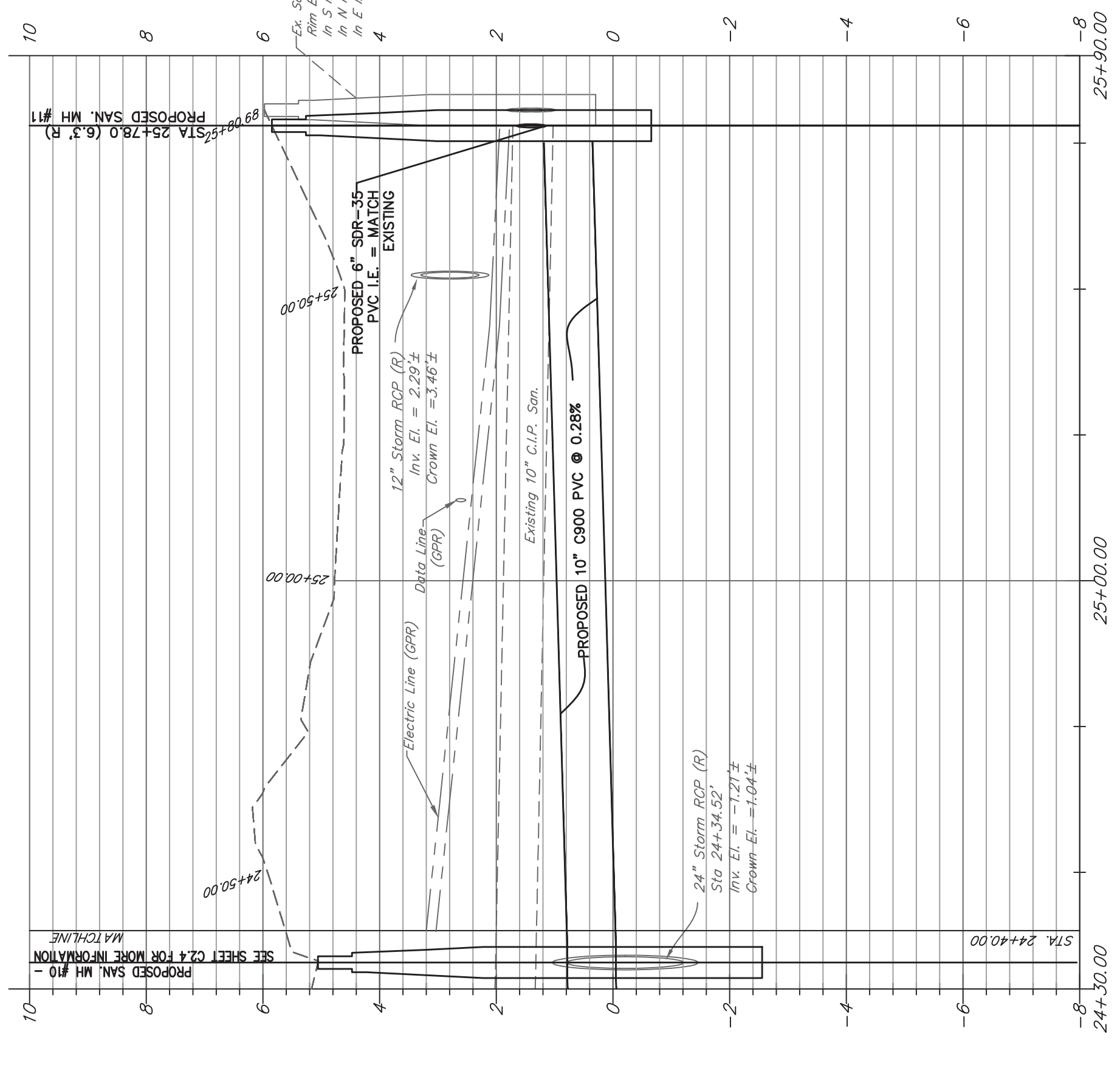
NOTE TO CONTRACTOR:
CONTRACTOR TO CALL SUNSHINE STATE ONE-CALL OF FLORIDA, 1-800-432-0000 A MINIMUM OF 2 DAYS PRIOR TO EXCAVATION.



GIS AERIAL
N.T.S.



PLAN VIEW
Horizontal Scale: 1" = 20'



PROFILE VIEW
Horizontal Scale: 1" = 20'
Vertical Scale: 1" = 2'

- LEGEND:**
- (D) Description Data
 - (P) Plot Data Data
 - (R) Reported Data
 - FIP Found Iron Pipe
 - APP Found Appurtenant
 - FIP Found Iron Pipe
 - FPM Disc Found Manhole & Disk
 - FN&D Found Nail & Disk
 - IR Iron Rod
 - SIR Set 1/2" Iron Rod & LB 3868 Cap
 - MN Mag Nail
 - NO NO Identification
 - W.C. Witness Corner
 - BFP Backflow Preventer
 - Ball Building
 - C.O. Cleanout
 - C.O.M. Concrete Manhole
 - Conc. Concrete
 - c.i.p. Concrete Light Pole
 - D.I.A. Diameter
 - E.I. Elevation
 - Elec. Electric
 - F.F.E. Finished Floor Elevation
 - F.P.A. Finished Pole Attachment
 - CA Guy Anchor
 - HC Handicapped
 - HTD Hydraulic
 - Invert Invert
 - Inv. Invert
 - Masonry Masonry
 - MCS Manhole Cover Section
 - M.L.P. Meter Light Pole
 - O/A Overall
 - OHW Overhead Utility Lines
 - Pipe Plastic
 - PCP Reinforced Concrete Pipe
 - Ret. Retaining
 - S/W Sign-at-Way
 - Slip Slip
 - S.S. Street Sign
 - s.s. Temporary Benchmark
 - T.O.B. Traffic
 - Tran. Transformer
 - Typ. Utility Pole
 - U.H.I. Utility
 - Ver. Verizon
 - WW Water
 - w.l.p. Wood Light Pole

- NOTES:**
- SANITARY SERVICE LATERAL LOCATIONS OBTAINED FROM RECORD AS-BUILT DRAWINGS AND T.V. INSPECTION VIDEO. CONTRACTOR TO FIELD VERIFY LATERAL LOCATIONS PRIOR TO CONSTRUCTION. EXISTING UTILITIES ARE SHOWN FROM THE BEST INFORMATION AVAILABLE. UNDERGROUND UTILITIES INFORMATION COLLECTED ON 07/28/21 AND AS-BUILT RECORD DRAWINGS SUPPLIED BY UTILITY PROVIDERS. PRIOR TO CONSTRUCTION, CONTRACTOR TO VERIFY HORIZONTAL AND VERTICAL LOCATION OF ALL UTILITIES.
 -

NOTE TO CONTRACTOR:
CONTRACTOR TO CALL SUNSHINE STATE ONE-CALL OF FLORIDA, 1-800-432-4770, A MINIMUM OF 2 DAYS PRIOR TO EXCAVATION.

BY	DATE	DESCRIPTION
C.V.	1/13/22	10" RECTANGULAR DRILL PIPE REUSED TO OAD

FOR
MILLS and ASSOCIATES, INC.
CONSULTING ENGINEERS & LAND SURVEYORS
3242 HENDERSON BOULEVARD • SUITE 300
TAMPA, FLORIDA 33609-3056
TELEPHONE: (813) 876-5869

CITY OF TAMPA WASTE WATER DEPARTMENT

DRWN BY: C.V.
DSCR BY: C.V.
CHKD BY: LEM
SCALE: 1" = 20'

DATE 1/13/22
DATE 1/13/22
DATE 1/13/22

This item has been digitally signed and sealed by **Lawrence E Mills** using a digital signature. The signature code must be verified on any digital document.

Lawrence E Mills
P.E., No. 58116, F.S.
13-3436-0400

PROJECT
EXECUTIVE PARK GRAVITY SEWER REPLACEMENT

100% CONSTRUCTION DRAWINGS - 01/13/22

SHEET
C2.5

JOB NO.
21-013.001

STA. 24+40.00 TO 25+80.68