

**CITY OF TAMPA
MOBILITY DEPARTMENT**

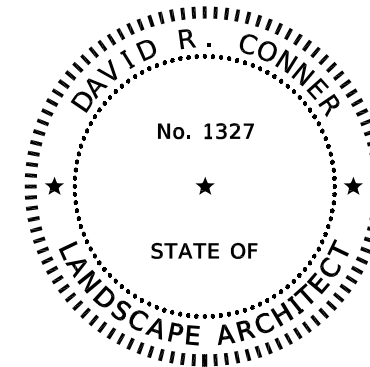
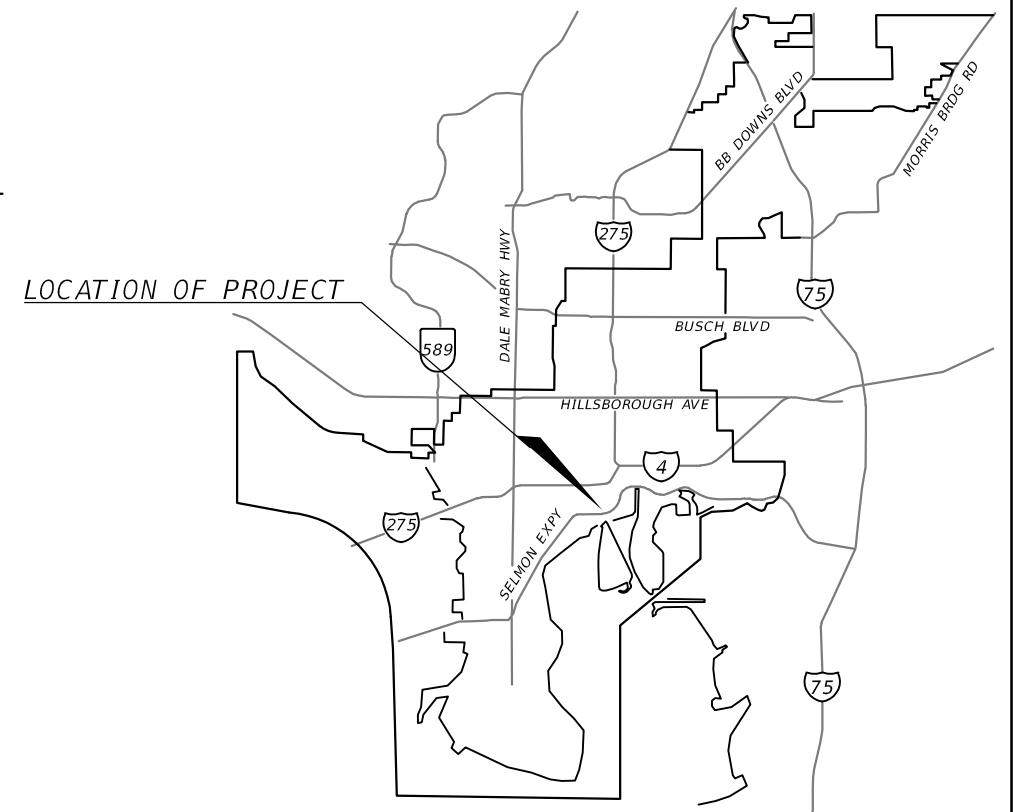
CONTRACT PLANS

FINANCIAL PROJECT ID 439476-4-58-02

INDEX OF LANDSCAPE PLANS

<i>SHEET NO.</i>	<i>SHEET DESCRIPTION</i>
LD-1	KEY SHEET
LD-2	SUMMARY OF PAY ITEMS
LD-3	TABULATION OF QUANTITIES AND PLANT SCHEDULE
LD-4	TECHNICAL MAINTENANCE PLAN
LD-5	PROJECT LAYOUT
LD-6	GENERAL NOTES
LD-7 TO LD-8	HARDSCAPE PLANS
LD-9 TO LD-12	HARDSCAPE DETAILS
LD-13 TO LD-14	PLANTING PLANS
LD-15 TO LD-18	PLANTING DETAILS

E/W GREEN SPINE CYCLE TRACK -
PH. 3C FROM 13TH AVE. TO 21ST. AVE.



THIS ITEM HAS BEEN DIGITALLY
SIGNED AND SEALED BY:

ON THE DATE ADJACENT TO THE SEAL
PRINTED COPIES OF THIS DOCUMENT ARE
NOT CONSIDERED SIGNED AND SEALED, AND
THE SIGNATURE MUST BE VERIFIED
ON ANY ELECTRONIC COPIES.

FINAL SUBMITTAL
September 27, 2021

LANDSCAPE PLANS
LANDSCAPE ARCHITECT OF RECORD:
DAVID CONNER
R.L.A. NO.: 1327
DAVID CONNER + ASSOCIATES
100 EAST MADISON STREET, STE 200
TAMPA, FL, 33602
813-258-1997
CONTRACT NO.: 21-C-00022
VENDOR NO.: 59-3421586
CERTIFICATE OF AUTHORIZATION NO.: LC0000319

CITY OF TAMPA PROJECT MANAGER:
NINA S. MABILLEAU E.I.

CONSTRUCTION CONTRACT NO.	FISCAL YEAR	SHEET NO.
21-C-00022		LD-1

THE OFFICIAL RECORD OF THIS SHEET IS THE ELECTRONIC FILE DIGITALLY SIGNED AND SEALED UNDER RULE 61G10-11.011 F.A.C.

15TH ST FROM 13TH AVE TO 21ST AVE

PAY ITEM NO.	DESCRIPTION	UNIT	FINAL
520-2-4	CONCRETE CURB, TYPE D	LF	160
580-1-1	LANDSCAPE COMPLETE (SMALL PLANTS)	LS	1
580-1-2	LANDSCAPE COMPLETE (LARGE PLANTS)	LS	1
COT-101	PAVERS, ARCHITECTURAL, SIDEWALK	SY	87
COT-102	PRE-EMERGENT HERBICIDE	SY	142
COT-103	FURNISHINGS	LS	1

PERFORMANCE TURF IS INCLUDED AND PAID FOR IN THE ROADWAY PLANS PAY ITEMS.

THE OFFICIAL RECORD OF THIS SHEET IS THE ELECTRONIC FILE DIGITALLY SIGNED AND SEALED UNDER RULE 61G10-11.011 F.A.C.

REVISIONS				DAVID R. CONNER, RLA LA0001327 DAVID CONNER + ASSOCIATES 100 E. MADISON ST, SUITE 200 TAMPA, FL 33602 CERT. OF AUTHORIZATION LC0000319	CITY OF TAMPA MOBILITY DEPARTMENT			SUMMARY OF PAY ITEMS	SHEET NO.
DATE	DESCRIPTION	DATE	DESCRIPTION		ROAD NO.	COUNTY	FINANCIAL PROJECT ID		LD-2

LANDSCAPE TABULATION OF QUANTITIES / PLANT SCHEDULE

15TH ST FROM 13TH AVE TO 21ST AVE

PAY ITEM NO.	SYM	BOTANICAL NAME	COMMON NAME	INSTALLED SIZE	MAXIMUM MAINTAINED SIZE	SPACING	REMARKS	UNIT	SHEET NUMBER				TOTAL THIS SHEET		GRAND TOTAL					
									LD-7 / LD-13		LD-8 / LD-14		PLAN	FINAL	PLAN	FINAL	PLAN	FINAL	PLAN	FINAL
									PLAN	FINAL	PLAN	FINAL								
520-2-4		CONCRETE CURB, TYPE D						LF	144		16			160		160				
580-1-1		LANDSCAPE COMPLETE (SMALL PLANTS)						LS						1		1				
	ZAM PUM	ZAMIA PUMILA	COONTIE	3 GALLON	18" Ht.	36 O.C.		EA	138		17			155						
580-1-2		LANDSCAPE COMPLETE (LARGE PLANTS)						LS						1		1				
	SAB PAL	SABAL PALMETTO	SABAL PALM	B&B			14' CT. HT.; MAINTAIN A MIN 8' VERTICAL CLEARANCE OVER SIDEWALKS; REGENERATED ROOT	EA	3		2			5						
	QUE CAT	QUERCUS VIRGINIANA 'CATHEDRAL'	CATHERDAL LIVE OAK	B&B			6 CAL; 20' HT X 10' SP; RPG TREES WITH SPREADING CHARACTER AND MINIMAL INTERAL GROWTH. NO TIP PRUNING. NO OPEN WOUNDS. 7' CLEAR TRUNK	EA	3					3						
		PREPARED SOIL LAYER						SY	126		16			142						
		BIO BARRIER						LF	68					68						
COT-101		PAVERS, ARCHITECTURAL, SIDEWALK						SY	69		18			87		87				
COT-102		PRE-EMERGENT HERBICIDE						SY	126		16			142		142				
COT-103		FURNISHINGS						LS						1		1				
		BENCH							1		1			2						
		BICYCLE RACK							2					2						
		BIKE MAINTENANCE STATION							1					1						
		LITTER RECEPTACLE							1		1			2						
		PASPALUM NOTATUM 'ARGENTINE'	BAHAI GRASS	SOD			PERFORMANCE TURF IS PROVIDED ON THE LANDSCAPE PLANS FOR REFERENCE. PERFORMANCE TURF QUANTITIES ARE INCLUDED IN THE ROADWAY PLANS PAY ITEMS.													

PAY ITEM NOTES:

SUMMARY OF PAY ITEMS

520-2-4, CONCRETE CURB, TYPE D
CONCRETE CURB SHALL BE MODIFIED PER HARDSCAPE DETAIL SHEET LD-9

580-1-1, LANDSCAPE COMPLETE, SMALL PLANTS INCLUDES:

1. PREPARATION OF PLANTING BEDS INCLUDING EXCAVATION OF EXISTING SOIL OR TURF AS DESCRIBED IN THE PLANS AND SPECIAL DETAILS.
2. COLLECTION AND APPROVAL OF PROPOSED PLANTS BY ENGINEER PRIOR TO DELIVERY TO THE PROJECT SITE.
3. DELIVERY AND HOLDING OF PLANTS IN PREPARATION OF INSTALLATION.
4. INSTALLATION OF PLANTS INCLUDING EXCAVATION OF SOILS FOR PLANTING, INCORPORATION OF SOIL AMENDMENTS, FERTILIZATION, PLACEMENT AND BACKFILLING OF SOIL, PLACEMENT OF MULCH AND ANY OTHER REQUIREMENTS COMMON TO THE WORK OR AS DESCRIBED IN THE SPECIFICATIONS.
5. 90 DAY ESTABLISHMENT WATERING AND MAINTENANCE PER PLANT ESTABLISHMENT PLAN.

580-1-2, LANDSCAPE COMPLETE, LARGE PLANTS INCLUDES:

1. COLLECTION AND APPROVAL OF PROPOSED PLANTS BY ENGINEER PRIOR TO DELIVERY TO THE PROJECT SITE.
2. DELIVERY AND HOLDING OF PLANTS IN PREPARATION OF INSTALLATION
3. INSTALLATION AND STAKING OF PLANTS AS CITY OF TAMPA STANDARDS OR AS DESCRIBED IN THE SPECIAL DETAILS
4. ORGANIC MULCH APPLIED AROUND THE BASE OF CANOPY TREES AND SHRUBS AS

INDICATED ON PLANS LD-13 AND LD-14

5. SABLE PALM - CHARACTER PALMS (SPC)
 - a. CHARACTER PALMS WILL BE SELECTED AND TAGGED BY THE ENGINEER PRIOR TO DELIVERY TO SITE.
6. PREPARED SOIL LAYER
 - a. PREPARED SOIL LAYER SHALL BE A FINISH SOIL LAYER
 - b. THE DEPTH OF THE FINISH SOIL SHALL BE PER PLANTING DETAILS NOTED IN LD-15 TO LD-18. THE AREA (CY) OF SOIL INCLUDE THE AVERAGE DEPTH OF SOIL AS DETERMINED BY THE HEIGHTS OF PLANTING AREAS.
7. BIO BARRIER
 - a. TYPAR: 24"
 - b. REFER TO HARDSCAPE DETAIL ON LD-10 FOR INSTALLATION
8. 90 DAY ESTABLISHMENT WATERING AND MAINTENANCE PER PLANT ESTABLISHMENT PLAN.

COT-101, PAVERS, ARCHITECTURAL SIDEWALK

1. PAVERS SHALL BE SUPPLIED FROM THE COT STOCKYARD
 - a. IF PAVERS ARE NOT AVAILABLE FROM THE STOCKYARD, THE CONTRACTOR WILL BE REQUIRED TO PROVIDE SAMPLES OF ALTERNATIVE PAVERS SIMILAR IN APPEARANCE TO HISTORIC PAVERS COMMON TO TAMPA, AND RECEIVE CITY APPROVAL PRIOR TO PURCHASE.
2. PAY ITEMS INCLUDES INSTALLATION AND BASE MATERIALS

COT-102. PRE-EMERGENT HERBICIDE

1. PRE-EMERGENT HERBICIDE: RONSTAR G. HERBICIDE, 50LB BAG
2. APPLY PRIOR TO MULCHING
3. APPLY AT TREE RING OF EACH TREE
4. APPLY AT RATES RECOMMENDED BY THE MANUFACTURER WITH THE AREAS OF NEW PLANTING BEDS

COT-103, FURNISHINGS

1. BENCH: VICTOR STANLEY; CLASSIC SERIES; MODEL NO. CR-138; 6'; COLOR: BLACK; INTERMEDIATE ARMRESTS (CENTER)
2. BIKE RACK: FAIR WEATHER SITE FURNISHINGS; MODEL NO. B-1500 (SURFACE MOUNT), COLOR: BLACK
3. BIKE MAINTENANCE STATION WITH AIR PUMP: THE PARK CATALOG: ITEM NO.: 509-2001-134; COLOR: BLACK
4. LITTER RECEPTACLE: VICTOR STANLEY; IRONSITES COLLECTION; MODEL NO. SD-42; 36 GALLON; COLOR: BLACK - POWDERCOAT

REVISIONS				DAVID R. CONNER, RLA LA0001327 DAVID CONNER + ASSOCIATES 100 E. MADISON ST, SUITE 200 TAMPA, FL 33602 CERT. OF AUTHORIZATION LC0000319	CITY OF TAMPA TRANSPORTATION AND STORMWATER SERVICES DEPARTMENT			SHEET NO. LD-3
DATE	DESCRIPTION	DATE	DESCRIPTION		ROAD NO.	COUNTY	FINANCIAL PROJECT ID	
					HILLSBOROUGH			

**TABULATION OF QUANTITIES
AND PLANT SCHEDULE**

THE OFFICIAL RECORD OF THIS SHEET IS THE ELECTRONIC FILE DIGITALLY SIGNED AND SEALED UNDER RULE 61G10-11.011 F.A.C.

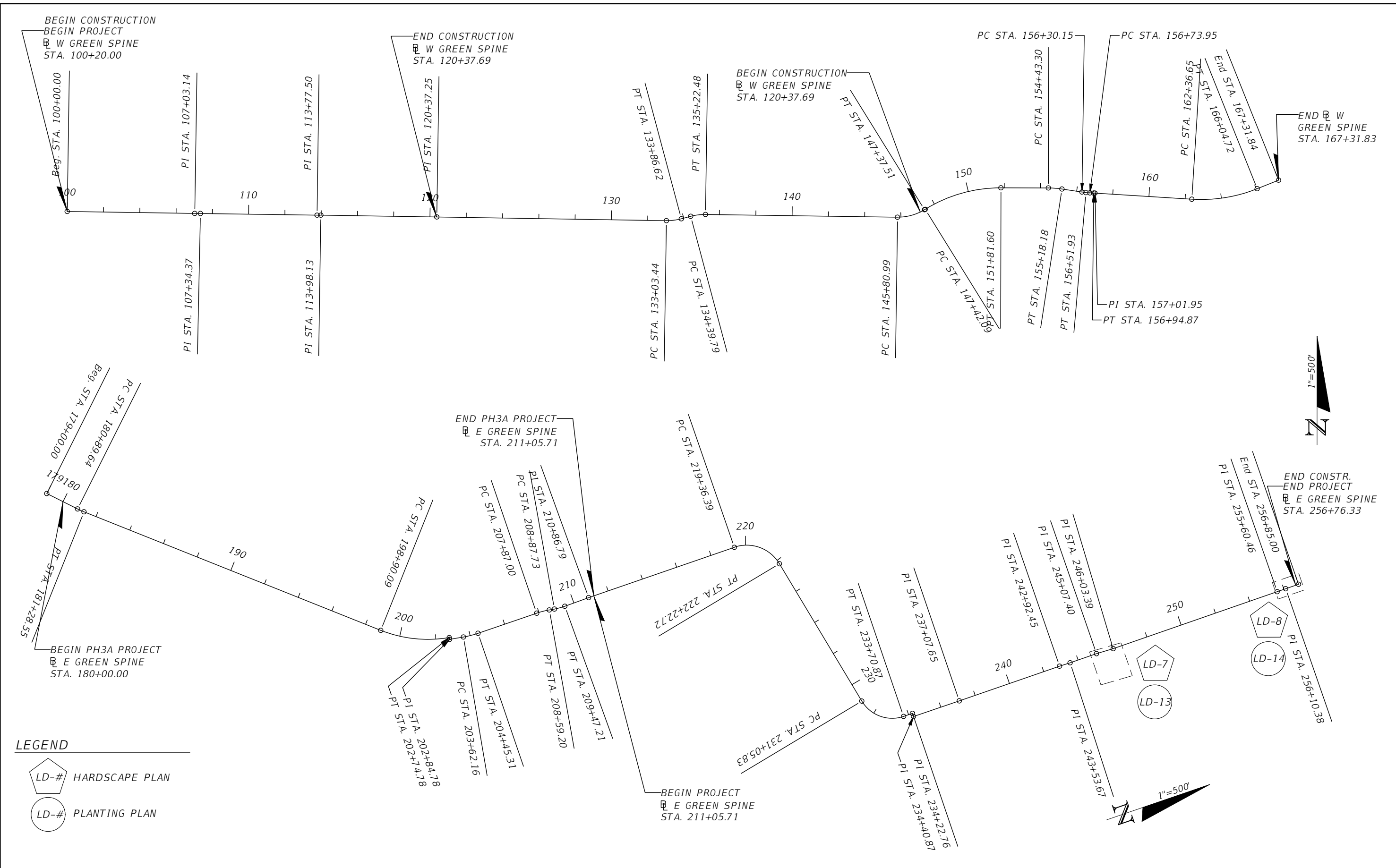
PLANT ESTABLISHMENT PERIOD - 90 DAYS

OPERATION	90 DAY ESTABLISHMENT PERIOD TO BE PROVIDED BY CONTRACTOR AS PART OF PAY ITEMS 580-1-1 AND 580-1-2.			CITY OF TAMPA COMMITMENT ON YEARLY CYCLE												
	WEEK	1 2 3 4	5 6 7 8	9 - 12	JAN	FEB	MAR	APR	MAY	JUNE	JULY	AUG	SEPT	OCT	NOV	DEC
WATERING # DAYS	7 7 7 7	4 4 4 4	2													
	WATERING BY TRUCK MUST BE PERFORMED EACH WEEK OF THE 90 DAY ESTABLISHMENT PERIOD AT THE FREQUENCY INDICATED (SEE CHART FOR WATER APPLICATION RATES). SATURATE TREE WELL COMPLETELY.			CITY SHALL WATER ONCE A WEEK OR AS NEEDED AFTER 180 DAY CONTRACTED MAINTENANCE PERIOD (DURING DROUGHT PERIODS) USING A CITY WATER TRUCK.												
WEEDING/LITTER PICK UP	1 TIME EACH WEEK	1 TIME EACH 2 WEEK PERIOD	1 TIME EACH 2 WEEK PERIOD		WEEDING EVERY 14 DAYS AS INDICATED USING AN APPROVED HERBICIDE SUCHS AS "ROUND UP" (GLYPHOSATE) OR EQUAL APPLIED AT THE RATE OF 1 1/2 OZ. PER GALLON AND APPLIED BY LICENSED APPLICATOR OR UNDER THE SUPERVISION OF LICENSED APPLICATOR. LITTER PICK UP MUST BE PERFORMED PRIOR TO APPLICATON OF HERBICIDE.											
	CONTRACTOR SHALL WEED AND PICK UP LITTER IN ALL PLANTING BEDS AND INDIVIDUAL TREE WELLS ONCE IN EACH FOUR WEEK PERIOD BEFORE THE END OF THE 90 DAY ESTABLISHMENT PERIOD.															
PRUNING	AS NEEDED TO MECHANICALLY REMOVE DAMAGED BRANCHES. CONTRACTOR SHALL MAINTAIN STATE OF FLORIDA #1 FORM TO ATTAIN FINAL ACCEPTANCE.			PRUNING SHALL BE ACCOMPLISHED USING CHAIN SAWS, HAND SAWS, AND/OR LOPPING SHEARS. SHRUBS SHALL BE PRUNED YEARLY TO A HEIGHT APPROPRIATE TO SPECIES, USE AND LOCATION.												
FERTILIZING	TREES, PALMS, SHRUBS AND GROUND COVERS SHALL BE FERTILIZED WHEN PLANTED PER DETAIL & SPECIFICATIONS.			TREES, PLAMS AND GROUNDCOVERS MUST BE FERTILIZED ANNUALLY PER MANUFACTURER'S SPECIFICATIONS.												
MOWING	EVERY 14 DAYS LEAVING 3" IN HEIGHT.			EVERY 14 DAYS LEAVING 3" HEIGHT.												
EDGING	EVERY 14 DAYS BY MECHNICAL MEANS.			EVERY 14 DAYS BY MECHNICAL MEANS.												
MULCHING	MULCH SHALL BE APPLIED IMMEDIATELY AFTER WATERING OF EACH PLAN. SEE PLANTING PLANS AND SPECIFICATIONS FOR MULCH TYPES/DEPTH TO BE USED.			RESTORE 3" LAYER MULCH ONCE A YEAR. SEE PLANTING PLANS FOR MULCH TYPES TO BE USED.												

WATER APPLICATION RATES	
(FOR NON-IRRIGATED AREAS)	
TREES AND PALMS	SATURATE TO 3' DEPTH. FLOOD TREE
TURF	REFER TO ROADWAY SPECIFICATIONS
SMALL PLANTS	WATER EACH PLANT BY HAND. PROVIDE 2 GALLONS WATER PER PLANT
NOTE:	
CONTRACTOR IS RESPONSIBLE FOR WATER SOURCE AS PART OF PAY ITEM.	

FERTILIZER APPLICATION RATES	
TREES AND PALMS	FERTILIZER PER DETAILS AND MANF. SPECIFICATIONS SHALL BE APPLIED AT TIME OF PLANTING AND ONCE ANNUALLY.
GROUNDCOVERS / GRASSES	FERTILIZER PER DETAILS AND MANF. SPECIFICATIONS SHALL BE APPLIED AT TIME OF PLANTING AND ONCE ANNUALLY.

REVISIONS				DAVID R. CONNER, RLA LA0001327 DAVID CONNER + ASSOCIATES 100 E. MADISON ST, SUITE 200 TAMPA, FL 33602 CERT. OF AUTHORIZATION LC0000319	CITY OF TAMPA MOBILITY DEPARTMENT			PLANT ESTABLISHMENT PERIOD	SHEET NO.
DATE	DESCRIPTION	DATE	DESCRIPTION		ROAD NO.	COUNTY	FINANCIAL PROJECT ID		LD-4
						HILLSBOROUGH			



LEGEND

LD-# HARDSCAPE PLAN

LD-# PLANTING PLAN

REVISIONS				DAVID R. CONNER, RLA LA0001327 DAVID CONNER + ASSOCIATES 100 E. MADISON ST, SUITE 200 TAMPA, FL 33602 CERT. OF AUTHORIZATION LC0000319	CITY OF TAMPA MOBILITY DEPARTMENT			PROJECT LAYOUT	SHEET NO. LD-5
DATE	DESCRIPTION	DATE	DESCRIPTION		ROAD NO.	COUNTY	FINANCIAL PROJECT ID		
					HILLSBOROUGH				

THE OFFICIAL RECORD OF THIS SHEET IS THE ELECTRONIC FILE DIGITALLY SIGNED AND SEALED UNDER RULE 61G10-11.011 F.A.C.

LANDSCAPING

1. THE BASELINE SHOWN IN THE PLANS IS FOR INFORMATION PURPOSE ONLY. THE BASELINE IS REFERENCED FROM PROJECT NO. 439476-1-58-01.
2. PERFORMANCE TURF INDICATED ON SHEETS LD-13 TO BE INCLUDED IN CIVIL PAY ITEM FOR PERFORMANCE SOD.
3. INSTALL SMALL PLANT ROOTBALLS A MINIMUM OF 2 FEET FROM UNDERGROUND UTILITIES.
4. DO NOT INSTALL LANDSCAPE MATERIALS THAT BLOCK TRAFFIC CONTROL SIGNS OR DEPARTMENT'S INFORMATIONAL OR LOGO SIGNS. ALL LANDSCAPE AREAS SHALL BE MAINTAINED TO PRESERVE VISIBILITY OF TRAFFIC CONTROL DEVICES AND SIGNS. RESET SIGNS DISTURBED DURING CONSTRUCTION TO CURRENT STANDARDS FOR HEIGHT, OFFSET, AND METHOD OF INSTALLATION AT THE CONTRACTOR'S EXPENSE.
5. SCHEDULE ALL ON-SITE PLANT DELIVERIES TO OCCUR ON MONDAY THROUGH FRIDAY ONLY UNLESS APPROVED BY THE ENGINEER IN ADVANCE. ENSURE THAT PLANT MATERIAL IS DELIVERED UNDAMAGED FROM TRANSPORTATION OR DIGGING OPERATIONS. THE ENGINEER MAY REJECT MATERIAL THAT HAS BEEN DAMAGED OR RENDERED UNACCEPTABLE DUE TO RELOCATION OR TRANSPORTATION FROM THE POINT OF ORIGIN. REPLACE DAMAGED PLANT MATERIAL AT NO ADDITIONAL EXPENSE TO THE DEPARTMENT.
6. "WATER IN" TREES AND PALMS LEAVING NO AIR POCKETS. FILL ANY AIR POCKETS WITH SOIL AND KEEP GRADE WITHIN TREE RING EVEN AND SMOOTH, MAINTAIN EROSION FREE TREE RINGS AND REPAIR AS NECESSARY PER PLANING DETAILS. WATER SOURCE AND APPLICATION OF WATER FOR THE SUCCESSFUL TRANSPLANT, ESTABLISHMENT, AND SURVIVAL OF PLANTS IS THE RESPONSIBILITY OF THE CONTRACTOR AT NO ADDITIONAL EXPENSE TO THE CITY.
7. DURING PLANTING, APPLY A SLOW/CONTROLLED RELEASE 8-2-12+4 MG PALM FERTILIZER THAT INCLUDES IRON, MANGANESE AND BORON AS MINOR ELEMENTS, DISTRIBUTE THE FERTILIZER EVENLY OVER THE TOP OF THE PLANTING HOLE WITHIN THE SOIL RING AT A RATE SPECIFIED IN THE MANUFACTURER'S RECOMMENDED LABEL DIRECTIONS.
8. TRIMMING OF PALMS WILL BE LIMITED TO DEAD/BROWN FRONDS AND ANY LOOSELY ATTACHED DANGLING FRONDS, FRUITS, AND PETIOLES OR SPATHES UNLESS OTHERWISE DIRECTED BY THE ENGINEER.
9. MULCH MATERIAL SHALL EITHER INORGANIC (SHELL ROCK) OR ORGANIC (SHREDDED HARDWOOD) MULCH AS INDICATED ON THE PLANS AND PLACED THROUGHOUT ALL NEW PLANTING BEDS. MULCH SHALL COVER ALL EXPOSED SOIL WITHIN BEDS TO COMPRESSED DEPTH OF 3". DO NOT PLACE MULCH AGAINST TRUNK OF PLANTS OR TREES. DO NOT MULCH PERFORMANCE TURF.
10. THE ESTABLISHMENT PERIOD SHALL BE ONE YEAR FROM THE DATE OF FINAL ACCEPTANCE OF THE INSTALLATION OF THE TOTAL PROJECT.
11. ALL LANDSCAPE MATERIAL SHALL BE INSTALLED AND MAINTAINED AT ALL TIMES IN ACCORDANCE WITH THE FDOT STANDARDS INDEX 580 AS WELL AS ALL OTHER APPLICABLE CITY OF TAMPA STANDARDS. APPLY THE MORE STRINGENT STANDARDS WHERE CONFLICT OCCURS.
12. PROCEDURE (TOPIC NO, 850-000-015-1 OF 01/01/2014), "ALL CONTRACTORS AND/OR PERMITTEE'S WHO CONTRACT THE APPLICATION OF FERTILIZER SHALL ENSURE THEY ARE LICENSED COMMERCIAL APPLICATORS WHO HAVE BEEN TRAINED THROUGH THE GREEN INDUSTRY BMP PROGRAM, AND HAVE OBTAINED A LIMITED CERTIFICATION FOR URBAN LANDSCAPE COMMERCIAL FERTILIZER APPLICATION UNDER SECTION 482.1562,F.S. WITH A CURRENT COPY OF THE LICENSE ON FILE.

13. THE EXISTING SIDEWALKS SHALL REMAIN AVAILABLE FOR SAFE USE THROUGHOUT THE PROJECT WITH ONLY PERIODIC CLOSURES AS APPROVED BY ENGINEER.

ROOT REGENERATED PALM REQUIREMENTS

1. ALL SABAL PALMS SHALL BE ROOT REGENERATED AND MEET THE FOLLOWING CRITERIA.
 - a. PALMS SHALL HAVE BEEN DUG AND REPLANTED IN CONTAINERS LOCATED WITHIN A NURSERY SPECIALIZING IN REGENERATED ROOT PALM TREE PRODUCTION.
 - b. PALM TREES SHALL HAVE BEEN PLANTED IN CONTAINERS AND HELD IN A NURSERY ENVIRONMENT FOR A MINIMUM OF 6 MONTHS. PRIOR TO DELIVERY TO THE PROJECT, ROOTBALL SHALL BE CONTAINED IN A STRETCH WRAP OR EQUIVALENT, FORMING A SOLID DURABLE ROOTBALL.
 - c. PRIOR TO DELIVERY TO THE PROJECT, PALMS ROOTS SHALL DEMONSTRATE SIGNIFICANT VISIBLE NEW REGENERATED ROOTS AT THE PERIMETER OF THE ROOT BALL.
 - d. PALM TREES SHALL DEMONSTRATE NEW GROWTH IN THE CANOPY INCLUDING FULLY EXTENDED AND OPEN FRONDS.
 - e. ALL PALM TREE LOADS SHALL BE TARPED TO PREVENT WIND DAMAGE DURING DELIVERY.
 - f. ALL PALM TREES SHALL BE INJECTED WITH 'TREE SAVER' (OXYTETRACYCLINE HYDROCHLORIDE 39% ACTIVE INGREDIENTS), A MINIMUM OF 1X PRIOR TO TRANSPLANTING, AND 1X - 90 DAYS AFTER TRANSPLANTING. PROVIDE RECEIPTS TO ENGINEER.

SITE GRADING




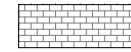


1. AFTER ALL UTILITIES HAVE BEEN LOCATED, STAKE OUT THE SITE IMPROVEMENTS FOR FIELD INSPECTION BY THE ENGINEER.
2. TWO WEEKS PRIOR TO COMMENCEMENT OF GRADING WORK, APPLY ON-SELECTIVE HERBICIDE THROUGHOUT THE LIMITS OF GRADING WORK.
3. SHAPE SOILS TO FORM LANDSCAPE AREAS INDICATED.
4. USE IMPORTED SOIL SIMILAR IN COMPOSITION AND PERFORMANCE (ESPECIALLY RELATIVE TO DRAINAGE/PERCOLATION) TO THE IN-SITU MATERIAL AND MEET THE REQUIREMENTS OF SPECIFICATION SECTION 162-1.1 - FINISHED SOIL LAYER.
5. PROPERLY DISPOSE OF ANY EXCESS SOIL.
6. EXISTING TOPOGRAPHIC SURVEY INFORMATION INDICATED ON THESE PLANS WAS PREPARED BY OTHERS UNDER A PREVIOUS CONTRACT AND IS PROVIDED FOR REFERENCE ONLY ON THIS PROJECT.
7. CONFIRM EXISTING ELEVATIONS ON SITE PRIOR TO BEGINNING ANY EXCAVATION OR GRADING WORK. ANY DEVIATIONS FROM THE PLANS SHALL BE APPROVED BY THE ENGINEER IN ADVANCE.

UTILITY

1. IN THE EVENT A DIRECT UTILITIES CONFLICT DOES ARISE, THE PROPOSED PLANTING CAN BE MOVED WITH PRIOR APPROVAL OF THE ENGINEER.
2. USE EXTREME CAUTION WHEN EXCAVATING, INSTALLING, BACKFILLING AND COMPACTING AROUND EXISTING UTILITIES.

DESIGN SPEEDS		
SEGMENT	DESIGN SPEED	POSTED SPEED
PHASE 3C (13TH AVE. TO 17TH AVE.)	30 MPH	25 MPH

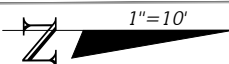
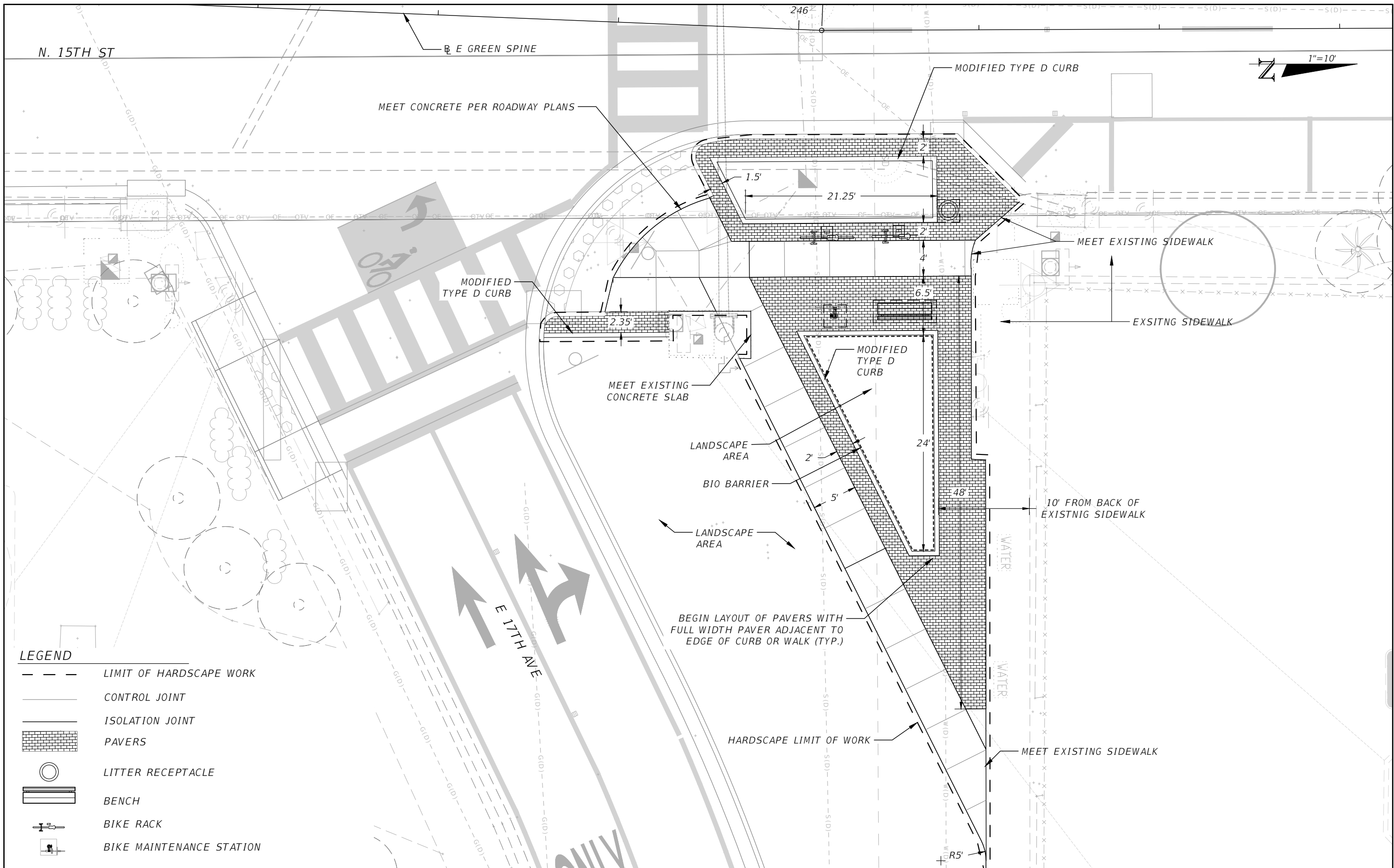
LEGEND

-  EXISTING TREE
-  CONTROL JOINT
-  ISOLATION JOINT
-  PAVERS
-  LITTER RECEPTACLE
-  BENCH

REVISIONS				DAVID R. CONNER, RLA LA0001327 DAVID CONNER + ASSOCIATES 100 E. MADISON ST, SUITE 200 TAMPA, FL 33602 CERT. OF AUTHORIZATION LC0000319	CITY OF TAMPA MOBILITY DEPARTMENT			SHEET NO. LD-6
DATE	DESCRIPTION	DATE	DESCRIPTION		ROAD NO.	COUNTY	FINANCIAL PROJECT ID	

GENERAL NOTES

THE OFFICIAL RECORD OF THIS SHEET IS THE ELECTRONIC FILE DIGITALLY SIGNED AND SEALED UNDER RULE 61G10-11.011 F.A.C.



LEGEND

	LIMIT OF HARDSCAPE WORK
	CONTROL JOINT
	ISOLATION JOINT
	PAVERS
	LITTER RECEPTACLE
	BENCH
	BIKE RACK
	BIKE MAINTENANCE STATION

REVISIONS			
DATE	DESCRIPTION	DATE	DESCRIPTION

DAVID R. CONNER, RLA
 LA0001327
 DAVID CONNER + ASSOCIATES
 100 E. MADISON ST, SUITE 200
 TAMPA, FL 33602
 CERT. OF AUTHORIZATION LC0000319

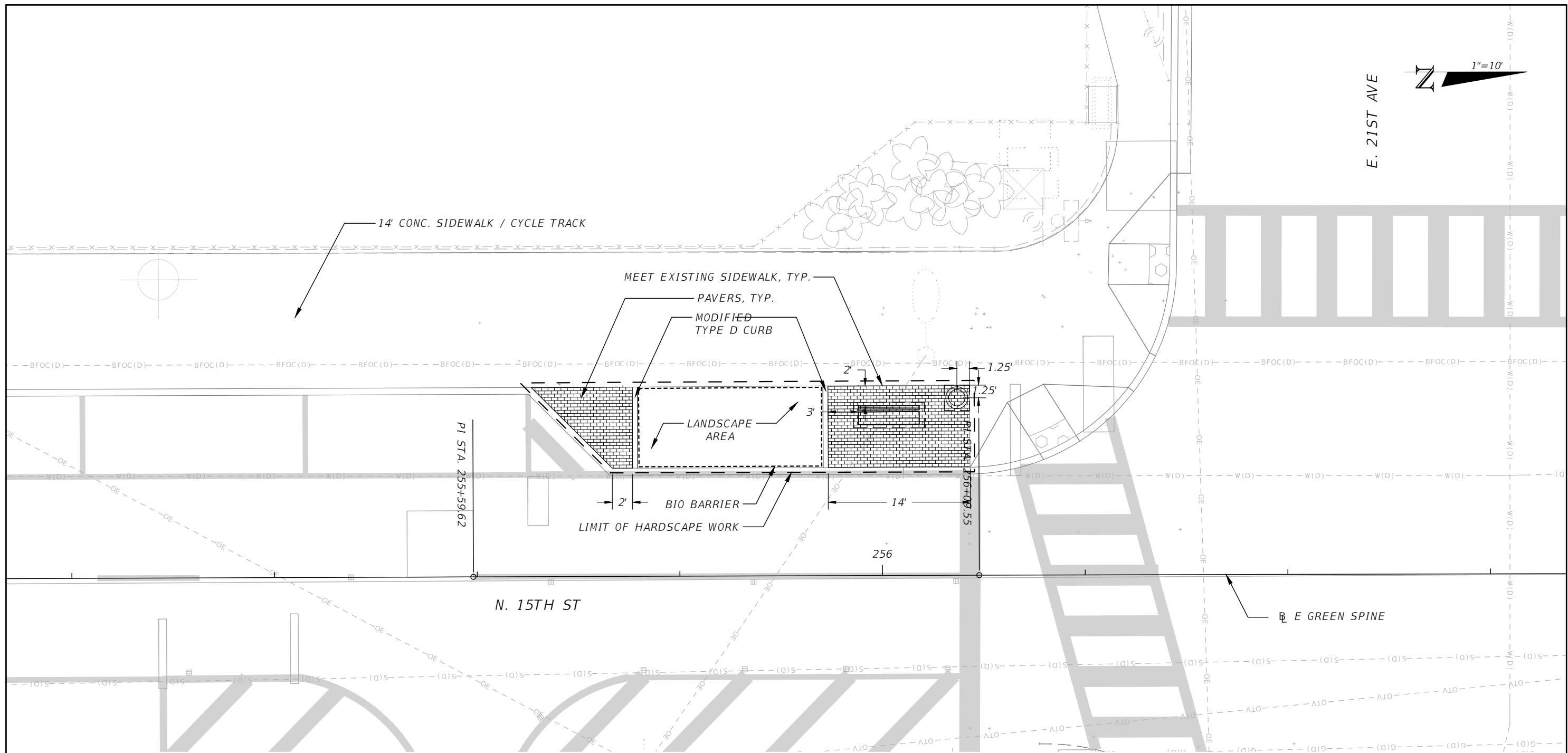
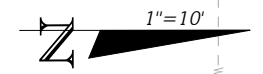
CITY OF TAMPA MOBILITY DEPARTMENT		
ROAD NO.	COUNTY	FINANCIAL PROJECT ID
	HILLSBOROUGH	

HARDSCAPE PLANS (1)

SHEET NO.
LD-7

THE OFFICIAL RECORD OF THIS SHEET IS THE ELECTRONIC FILE DIGITALLY SIGNED AND SEALED UNDER RULE 61G10-11.011 F.A.C.

E. 21ST AVE



LEGEND

	LIMIT OF HARDSCAPE WORK
	PAVERS
	LITTER RECEPTACLE
	BENCH

REVISIONS			
DATE	DESCRIPTION	DATE	DESCRIPTION

DAVID R. CONNER, RLA
 LA0001327
 DAVID CONNER + ASSOCIATES
 100 E. MADISON ST, SUITE 200
 TAMPA, FL 33602
 CERT. OF AUTHORIZATION LC0000319

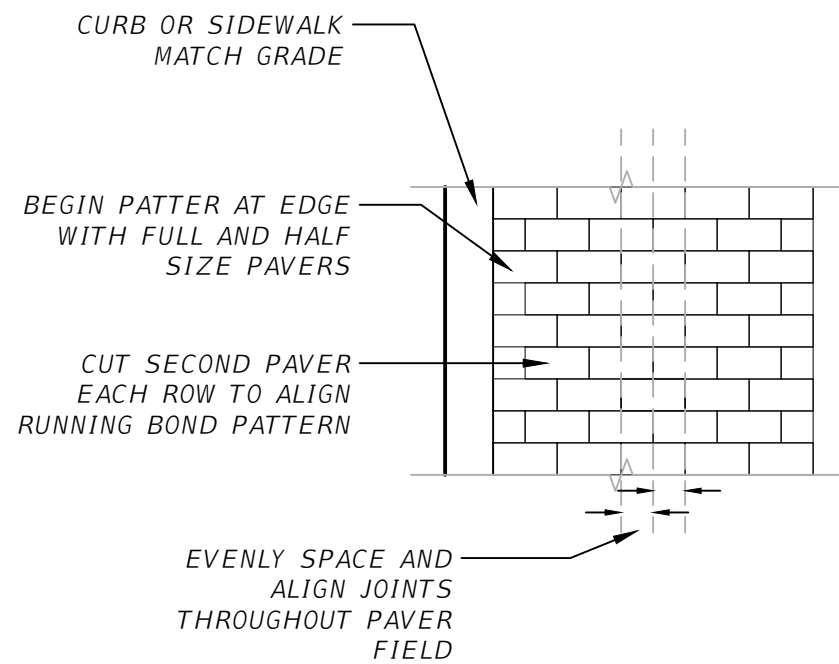
CITY OF TAMPA MOBILITY DEPARTMENT		
ROAD NO.	COUNTY	FINANCIAL PROJECT ID
	HILLSBOROUGH	

HARDSCAPE PLANS (2)

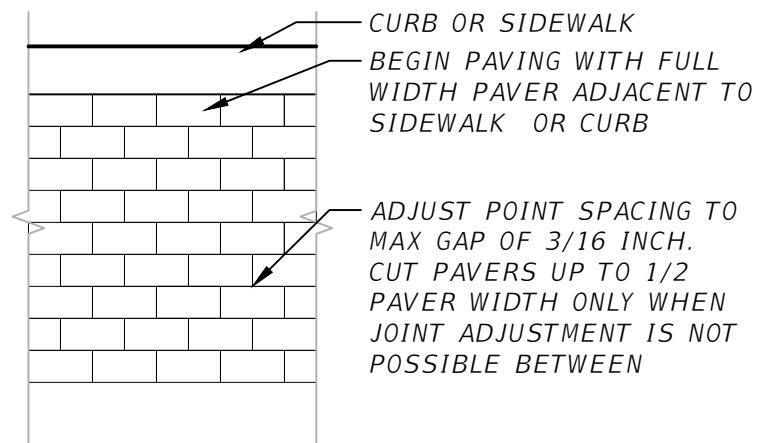
LD-8

SHEET NO.
LD-8

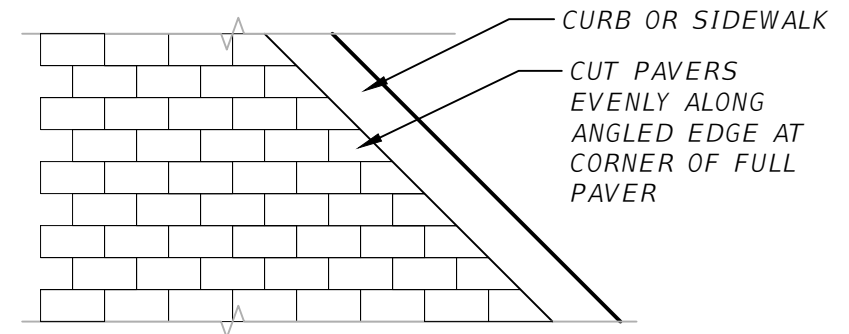
THE OFFICIAL RECORD OF THIS SHEET IS THE ELECTRONIC FILE DIGITALLY SIGNED AND SEALED UNDER RULE 61G10-11.011 F.A.C.



PERPENDICULAR TO CURB OR SIDEWALK



PARALLEL TO CURB OR SIDEWALK

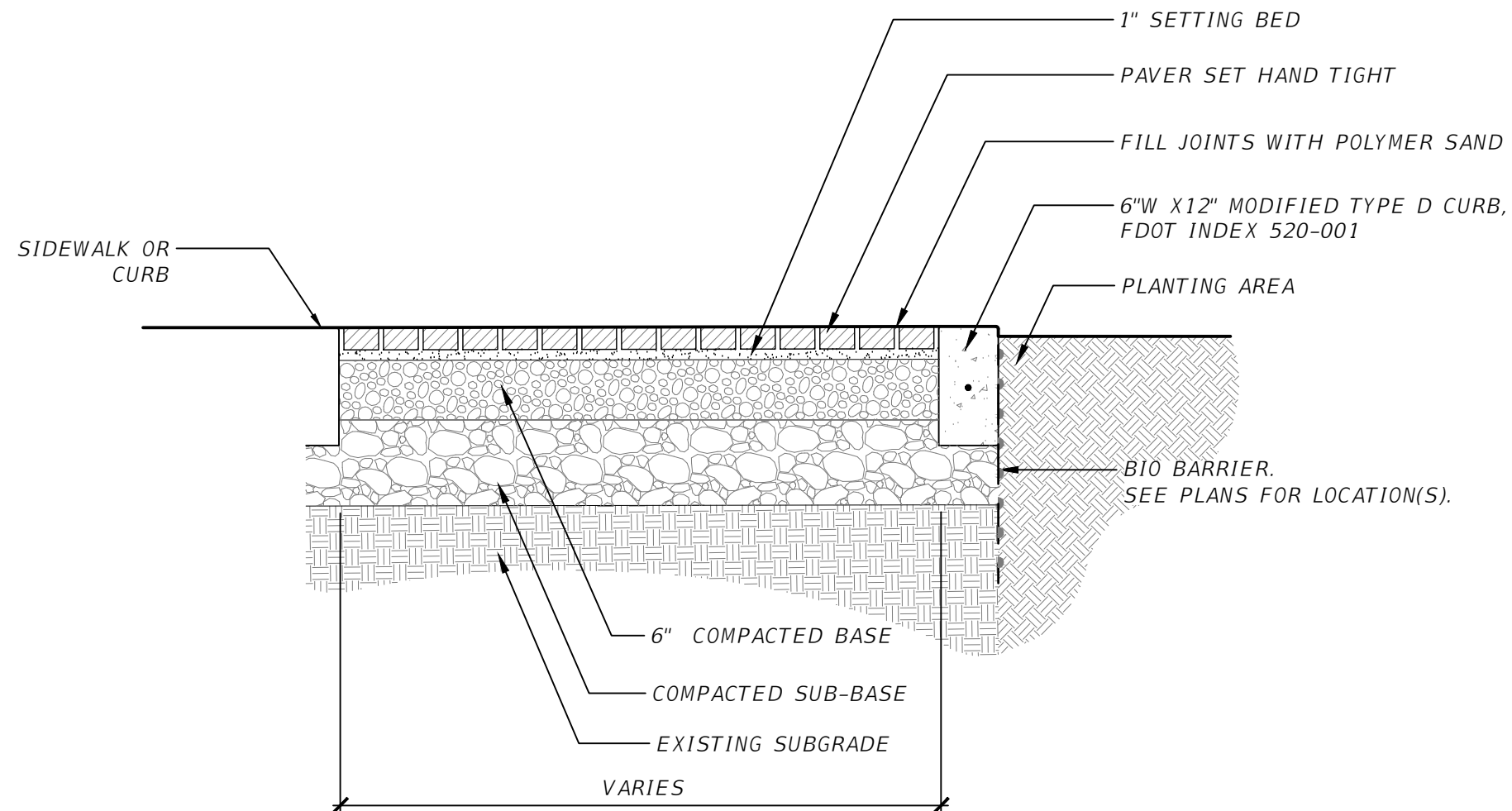


PAVING AT MISALIGNED EDGE

1 UNIT PAVING PATTERN - RUNNING BOND
1/2" = 1'-0"

DCA-GR-29

REVISIONS				DAVID R. CONNER, RLA LA0001327 DAVID CONNER + ASSOCIATES 100 E. MADISON ST, SUITE 200 TAMPA, FL 33602 CERT. OF AUTHORIZATION LC0000319	CITY OF TAMPA MOBILITY DEPARTMENT			SHEET NO. LD-9
DATE	DESCRIPTION	DATE	DESCRIPTION		ROAD NO.	COUNTY	FINANCIAL PROJECT ID	
					HILLSBOROUGH		<i>HARDSCAPE DETAILS (1)</i>	



NOTE: IF AVAILABLE AT TIME OF CONSTRUCTION, BRICKS TO BE SUPPLIED BY CITY OF TAMPA STOCK YARD. MATCH CITY OF TAMPA GREEN SPINE PROJECT.

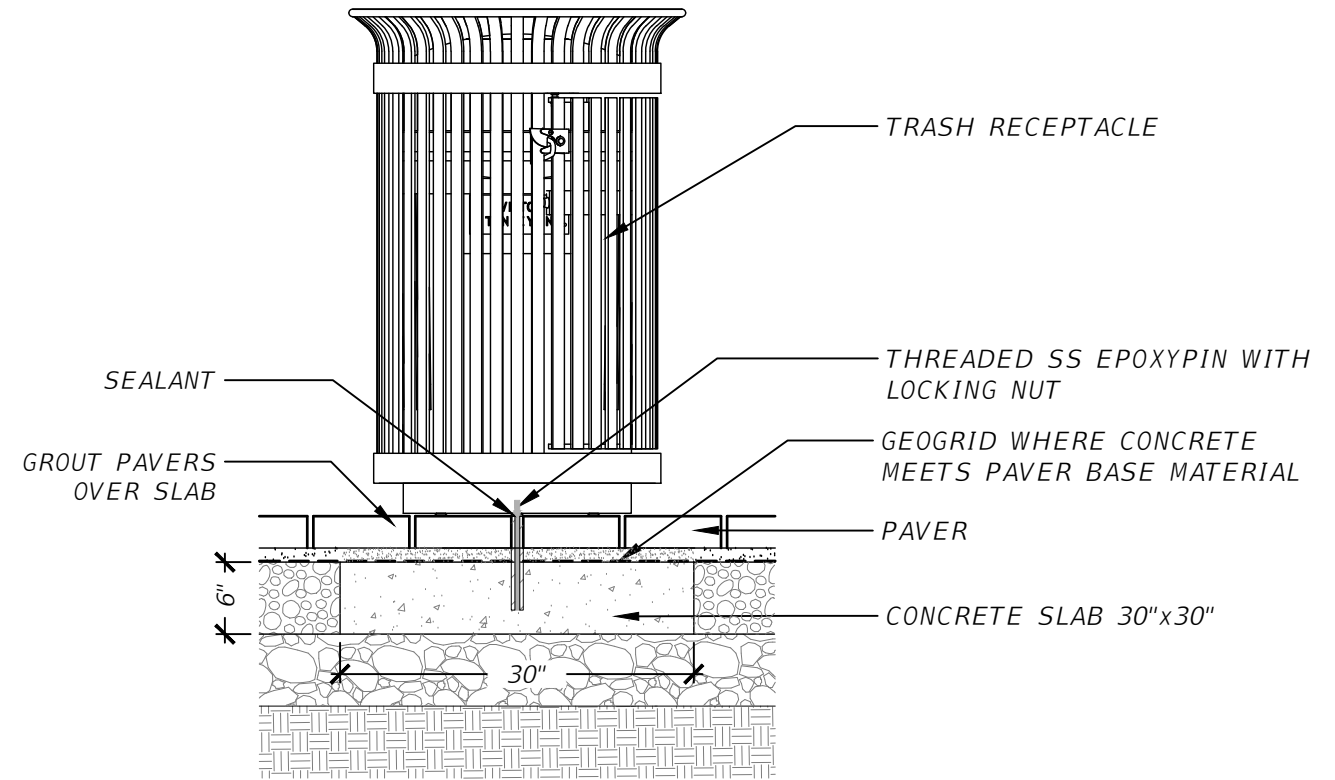
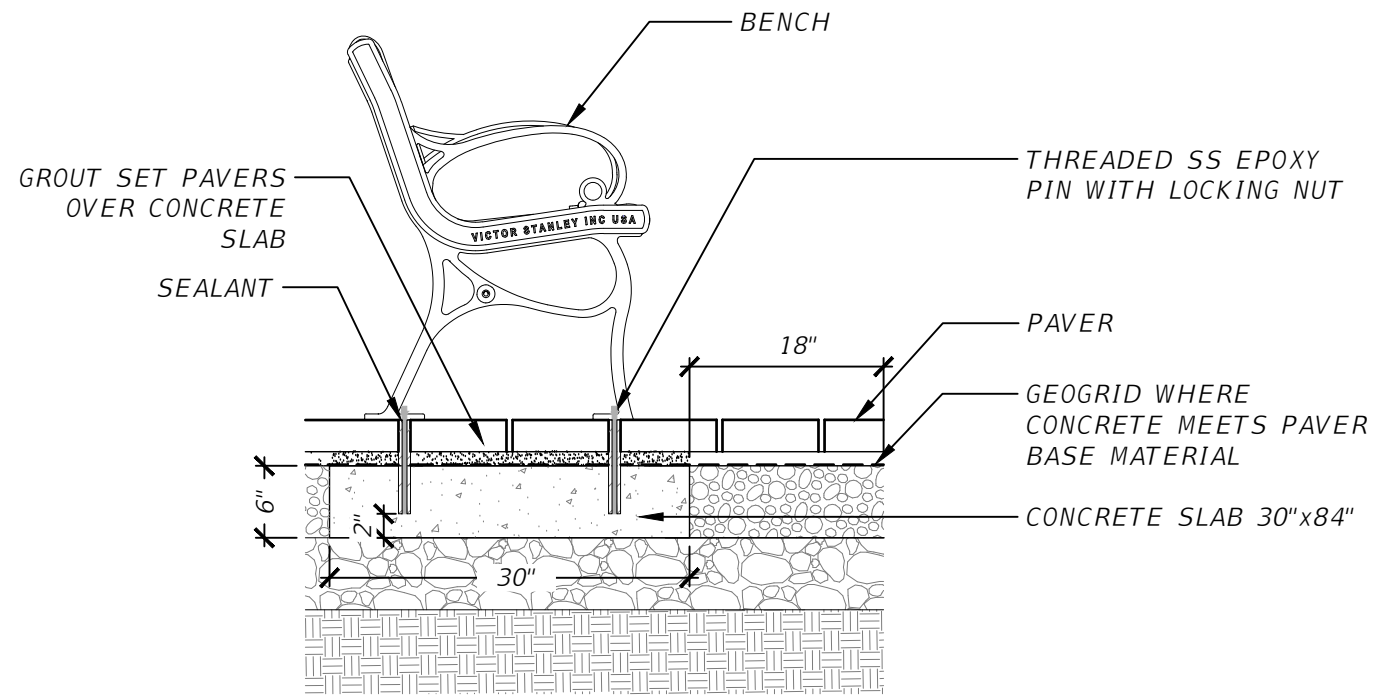
TYPICAL UNIT PAVER SECTION

1

3/4" = 1'-0"

DCA-GR-24

REVISIONS				DAVID R. CONNER, RLA LA0001327 DAVID CONNER + ASSOCIATES 100 E. MADISON ST, SUITE 200 TAMPA, FL 33602 CERT. OF AUTHORIZATION LC0000319	CITY OF TAMPA MOBILITY DEPARTMENT			SHEET NO. LD-10
DATE	DESCRIPTION	DATE	DESCRIPTION		ROAD NO.	COUNTY	FINANCIAL PROJECT ID	
					HILLSBOROUGH		HARDSCAPE DETAILS (2)	



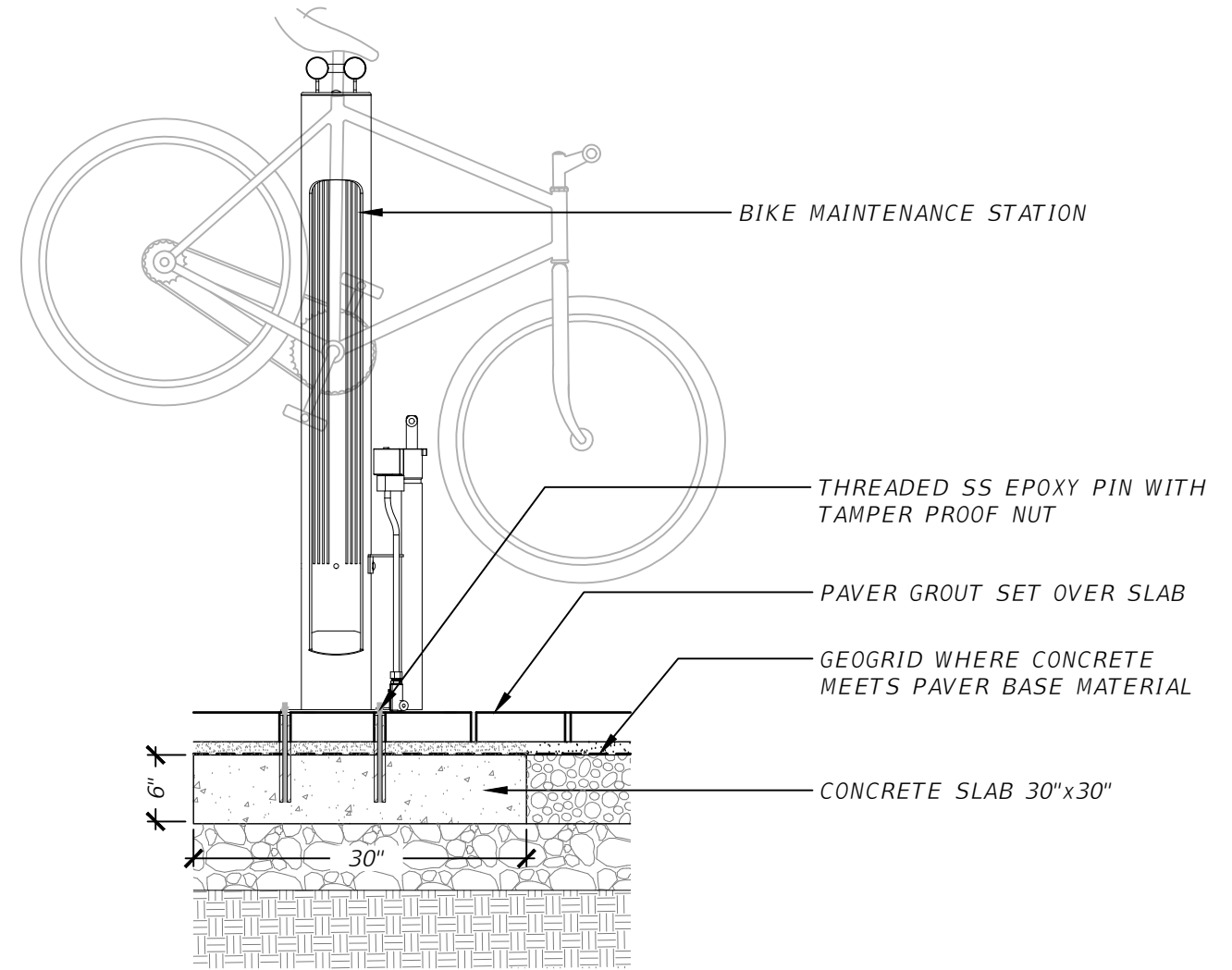
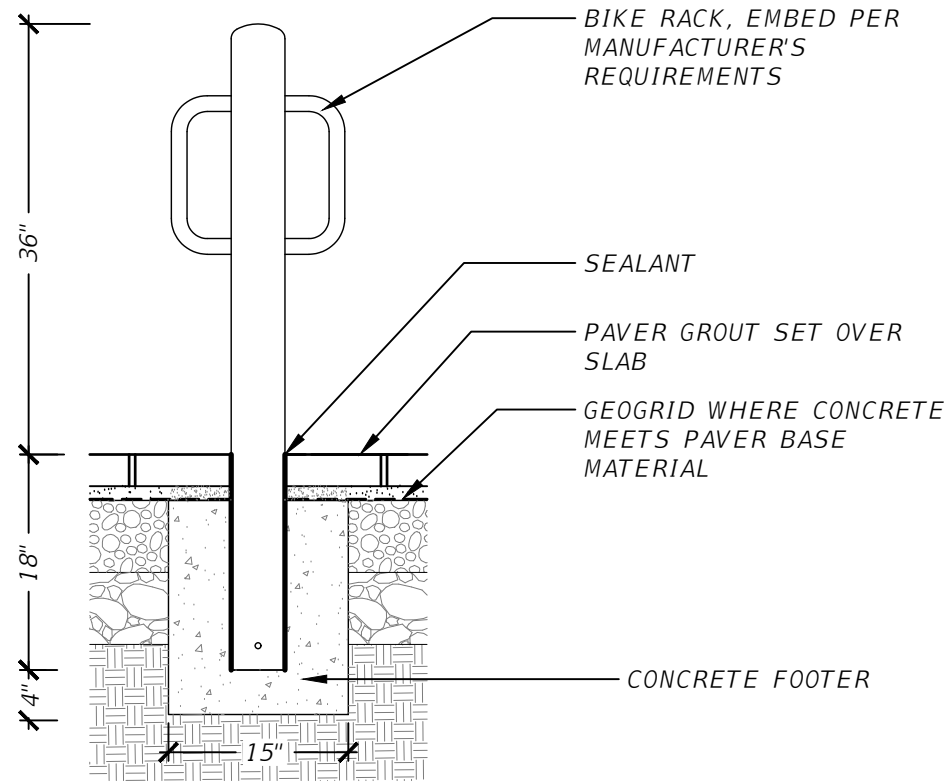
1 BENCH MOUNTING DETAIL
3/4" = 1'-0"

DCA-GR-32

2 TRASH RECEPTACLE MOUNTING DETAIL
3/4" = 1'-0"

DCA-GR-31

REVISIONS				DAVID R. CONNER, RLA LA0001327 DAVID CONNER + ASSOCIATES 100 E. MADISON ST, SUITE 200 TAMPA, FL 33602 CERT. OF AUTHORIZATION LC0000319	CITY OF TAMPA MOBILITY DEPARTMENT			SHEET NO. LD-11
DATE	DESCRIPTION	DATE	DESCRIPTION		ROAD NO.	COUNTY	FINANCIAL PROJECT ID	
					HILLSBOROUGH			



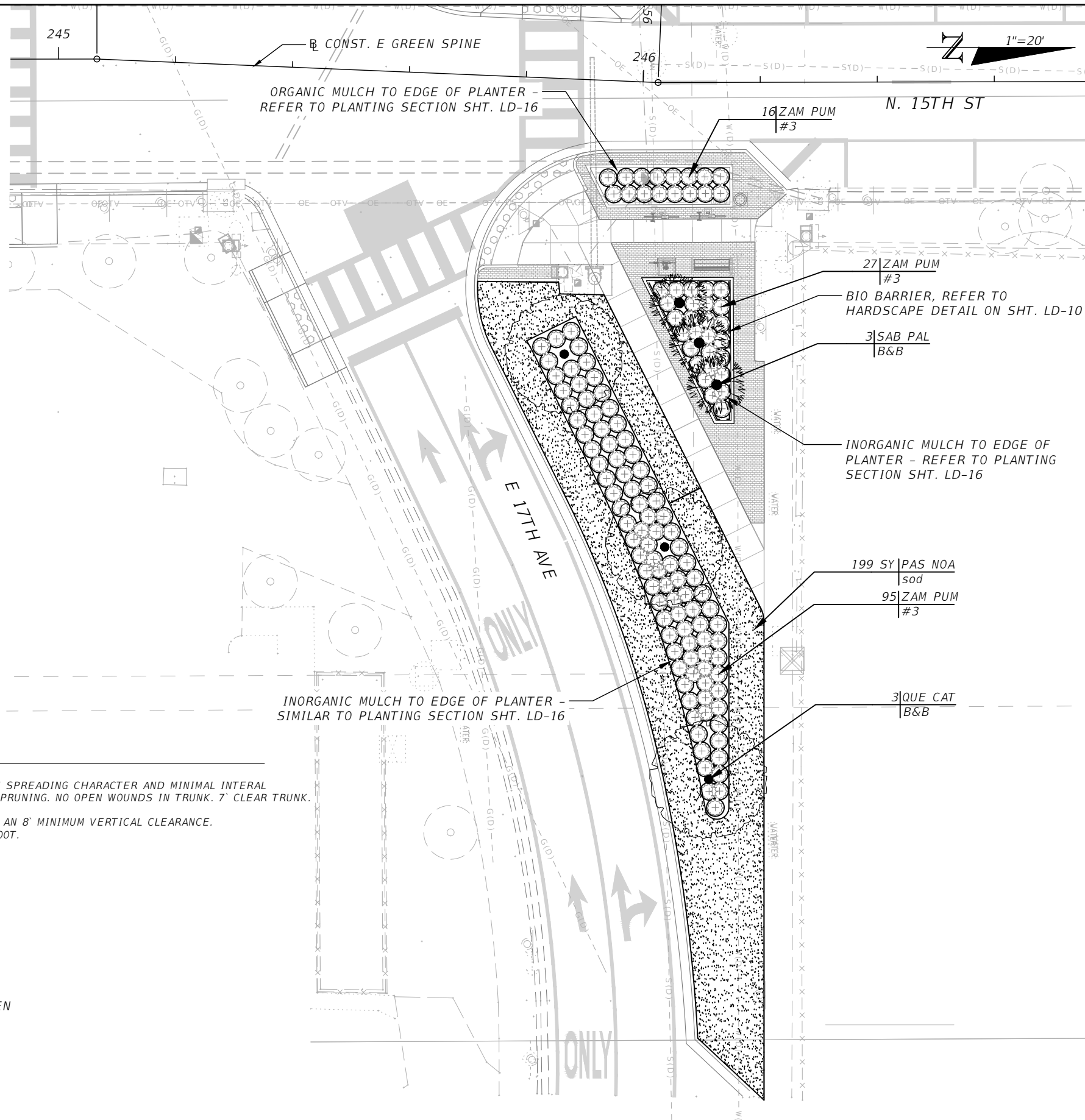
1 BIKE RACK MOUNTING DETAIL
3/4" = 1'-0"

DCA-GR-34

2 BIKE MAINTENANCE STATION MOUNTING DETAIL
3/4" = 1'-0"

DCA-GR-33

REVISIONS				DAVID R. CONNER, RLA LA0001327 DAVID CONNER + ASSOCIATES 100 E. MADISON ST, SUITE 200 TAMPA, FL 33602 CERT. OF AUTHORIZATION LC0000319	CITY OF TAMPA MOBILITY DEPARTMENT			HARDSCAPE DETAILS (4)	SHEET NO. LD-12
DATE	DESCRIPTION	DATE	DESCRIPTION		ROAD NO.	COUNTY	FINANCIAL PROJECT ID		
					HILLSBOROUGH				



PLANT SCHEDULE

TREES	QTY	BOTANICAL / COMMON NAME	CONT	CAL	SIZE	REMARKS
QUE CAT	3	QUERCUS VIRGINIANA 'CATHEDRAL' CATHEDRAL LIVE OAK	B&B	6" CAL.	20' HT X 10' SP	RPG TREES WITH SPREADING CHARACTER AND MINIMAL INTERNAL GROWTH. NO TIP PRUNING. NO OPEN WOUNDS IN TRUNK. 7' CLEAR TRUNK.
SAB PAL	3	SABAL PALMETTO SABAL PALM	B&B		14' CT	14' CT, MAINTAIN AN 8' MINIMUM VERTICAL CLEARANCE. REGENERATED ROOT.
SHRUBS	QTY	BOTANICAL / COMMON NAME	CONT	SIZE	REMARKS	
ZAM PUM	138	ZAMIA PUMILA COONTIE	#3	15" HT X 15" SP	36" O.C.	
GROUND COVERS	QTY	BOTANICAL / COMMON NAME	CONT	SIZE	SPACING	REMARKS
PAS NOA	199 SY	PASPALUM NOTATUM 'ARGENTINE' ARGENTINE BAHIAGRASS	SOD			

- NOTES:
1. APPLY PRE-EMERGENT HERBICIDE TO ALL PLANT BEDS PRIOR TO APPLYING MULCH.
 2. TREES TO COUNT TOWARDS TREE REPLACEMENT REQUIREMENTS FOR TREES REMOVED FOR E/W GREEN SPINECYCLE TRACK PHASE 3A - NUCCIO PARKWAY FROM NORTH NEBRASKA AVE TO 7TH AVE.

REVISIONS				DAVID R. CONNER, RLA LA0001327 DAVID CONNER + ASSOCIATES 100 E. MADISON ST, SUITE 200 TAMPA, FL 33602 CERT. OF AUTHORIZATION LC0000319	CITY OF TAMPA MOBILITY DEPARTMENT			SHEET NO. LD-13
DATE	DESCRIPTION	DATE	DESCRIPTION		ROAD NO.	COUNTY	FINANCIAL PROJECT ID	
					HILLSBOROUGH		PLANTING PLANS (1)	

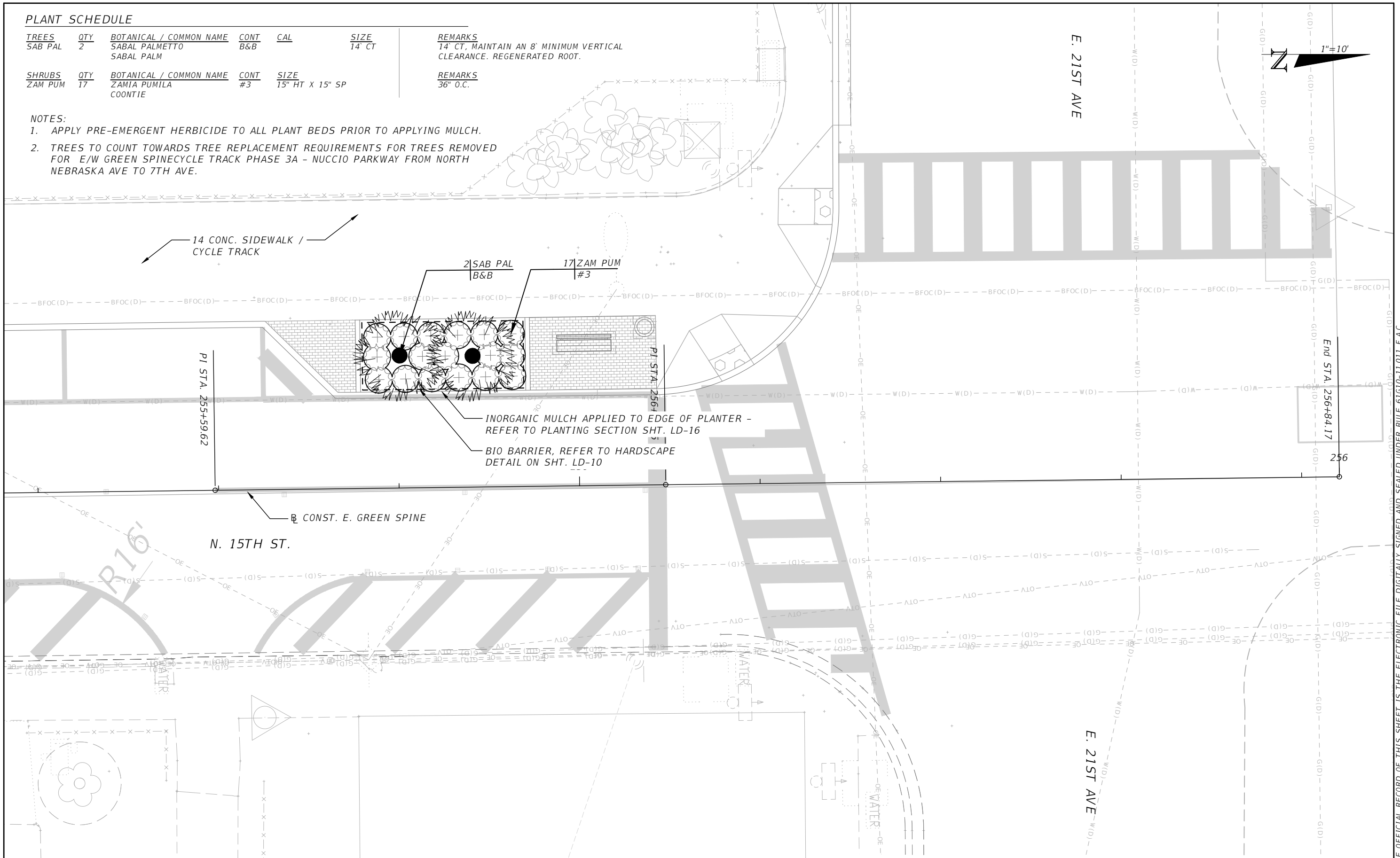
THE OFFICIAL RECORD OF THIS SHEET IS THE ELECTRONIC FILE DIGITALLY SIGNED AND SEALED UNDER RULE 61G10-11.011 F.A.C.

PLANT SCHEDULE

TREES	QTY	BOTANICAL / COMMON NAME	CONT	CAL	SIZE	REMARKS
SAB PAL	2	SABAL PALMETTO SABAL PALM	B&B		14" CT	14" CT, MAINTAIN AN 8" MINIMUM VERTICAL CLEARANCE. REGENERATED ROOT.
SHRUBS	QTY	BOTANICAL / COMMON NAME	CONT	SIZE	REMARKS	
ZAM PUM	17	ZAMIA PUMILA COONTIE	#3	15" HT X 15" SP	36" O.C.	

NOTES:

1. APPLY PRE-EMERGENT HERBICIDE TO ALL PLANT BEDS PRIOR TO APPLYING MULCH.
2. TREES TO COUNT TOWARDS TREE REPLACEMENT REQUIREMENTS FOR TREES REMOVED FOR E/W GREEN SPINE/CYCLE TRACK PHASE 3A - NUCCIO PARKWAY FROM NORTH NEBRASKA AVE TO 7TH AVE.



THE OFFICIAL RECORD OF THIS SHEET IS THE ELECTRONIC FILE DIGITALLY SIGNED AND SEALED UNDER RULE 61G10-11.011 F.A.C.

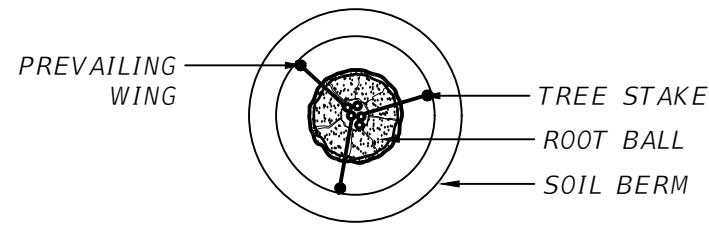
REVISIONS			
DATE	DESCRIPTION	DATE	DESCRIPTION

DAVID R. CONNER, RLA
LA0001327
DAVID CONNER + ASSOCIATES
100 E. MADISON ST, SUITE 200
TAMPA, FL 33602
CERT. OF AUTHORIZATION LC0000319

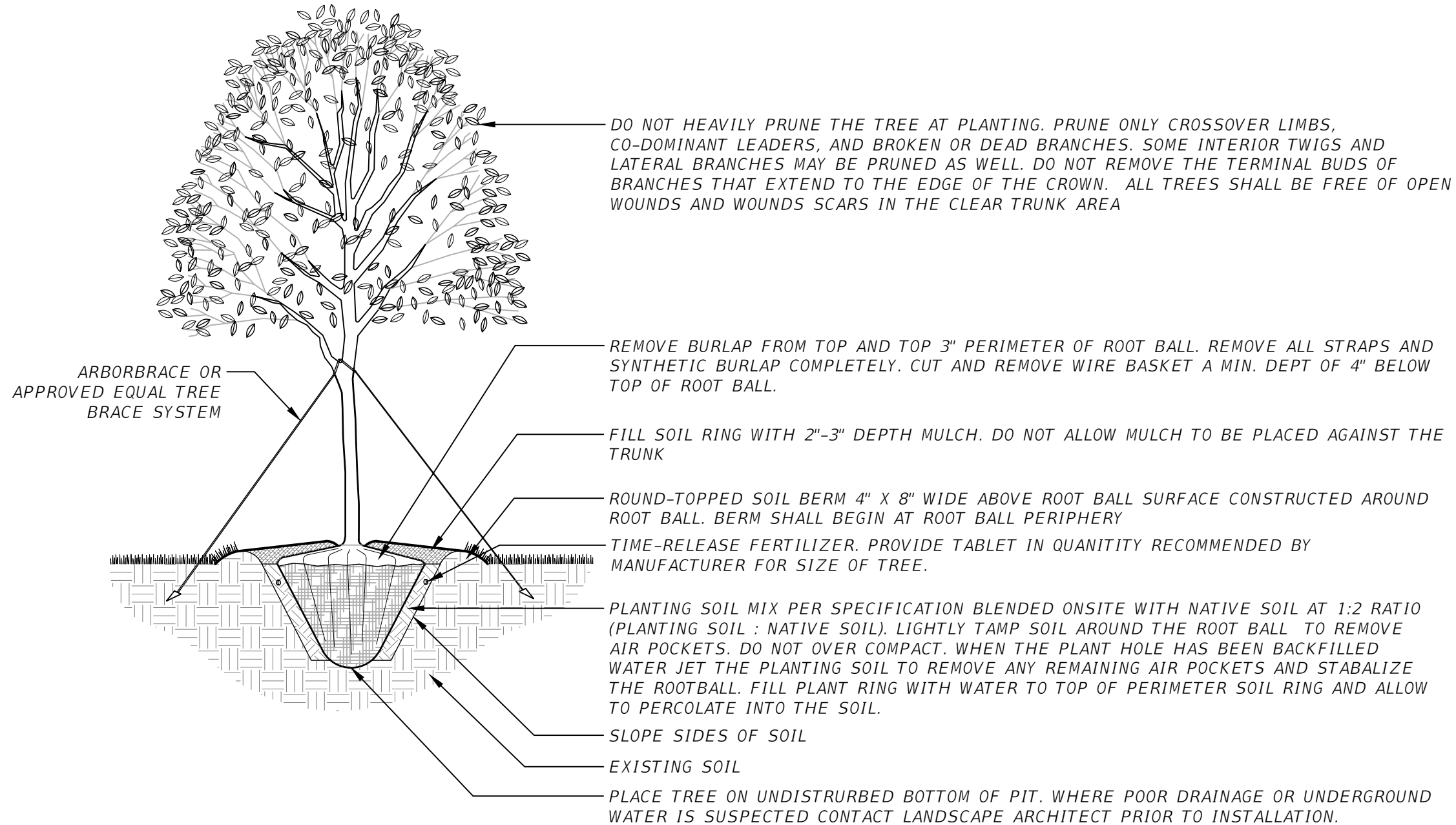
CITY OF TAMPA MOBILITY DEPARTMENT		
ROAD NO.	COUNTY	FINANCIAL PROJECT ID
	HILLSBOROUGH	

PLANTING PLANS (2)

SHEET NO.
LD-14



STAKING PLAN



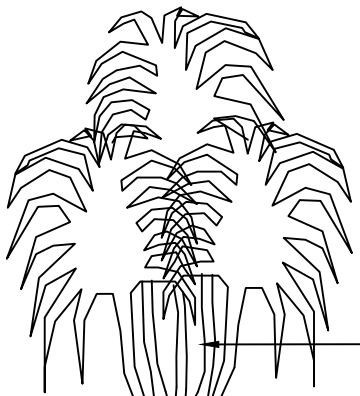
NOTES:
 1) PULL MULCH AWAY FROM TRUNK OF TREE. NO MORE THAN 1" OF MULCH ON TOP OF ROOT BALL.
 2) APPLY PRE-EMERGENT HERMIDICIDE TO ALL PLANTING BEDS PRIOR TO APPLYING MULCH.

1 LARGE TREE PLANTING
 1/4" = 1'-0"

DCA-GR-09

REVISIONS				DAVID R. CONNER, RLA LA0001327 DAVID CONNER + ASSOCIATES 100 E. MADISON ST, SUITE 200 TAMPA, FL 33602 CERT. OF AUTHORIZATION LC0000319	CITY OF TAMPA MOBILITY DEPARTMENT			SHEET NO. LD-15
DATE	DESCRIPTION	DATE	DESCRIPTION		ROAD NO.	COUNTY	FINANCIAL PROJECT ID	
					HILLSBOROUGH		<i>PLANTING DETAILS (1)</i>	

THE OFFICIAL RECORD OF THIS SHEET IS THE ELECTRONIC FILE DIGITALLY SIGNED AND SEALED UNDER RULE 61G10-11.011 F.A.C.



PALM TREE

ADJUST TREE OR PALM BRACING TO ALLOW FOR SHRUBS TO BE EVENLY SPACED. IF TREES OR PALMS ARE PLACED BEFORE SHRUBS, REMOVE BRACING DURING SHRUB INSTALLATION AND RESET TO ADJUST TO SHRUB LAYOUT.

PLACE SHRUB PLANTING AROUND TREES OR PALMS SUCH THAT ROWS OF SHRUBS ARE CONTINUOUS. DO NOT PLACE SHRUB PLANTING IN TREE OR PALM ROOT BALL. ADJUST SHRUB PLANTING SO THAT FINAL PLACEMENT OF SHRUBS IS ORGANIZED AND ORDERLY SO THAT THE SHRUBS FILL IN TOGETHER IN A CONSISTENT MANNER.

FILL DIRT. 18" MIN. PLACE IN 6" LIFTS. COMPACT EACH LIFT TO REMOVE AIR POCKETS AND PROVIDE FIRM SOIL FOR PLANTING. ENSURE THERE IS NOT CONSTRUCTION DEBRIS BENEATH FILL DIRT. DO NOT OVER COMPACT TO PREVENT DRAINAGE TO NATIVE SOIL

PLACE SHRUB ROWS ALONG PERIMETER OF BED OR PAVING AREA IN STRAIGHT, EVENLY SPACED LINES. SET SHRUBS 2/3 SPACING DIMENSION FROM EDGE OF BED.

$\frac{2}{3} X$ X

BIO BARRIER (SEE PLAN FOR LOCATION)

SHRUB PLANTING

2"-3" MULCH

18" MIN.

NOTE: APPLY PRE-EMERGENT HERBICIDE TO ALL PLANTING BEDS PRIOR TO APPLYING MULCH.

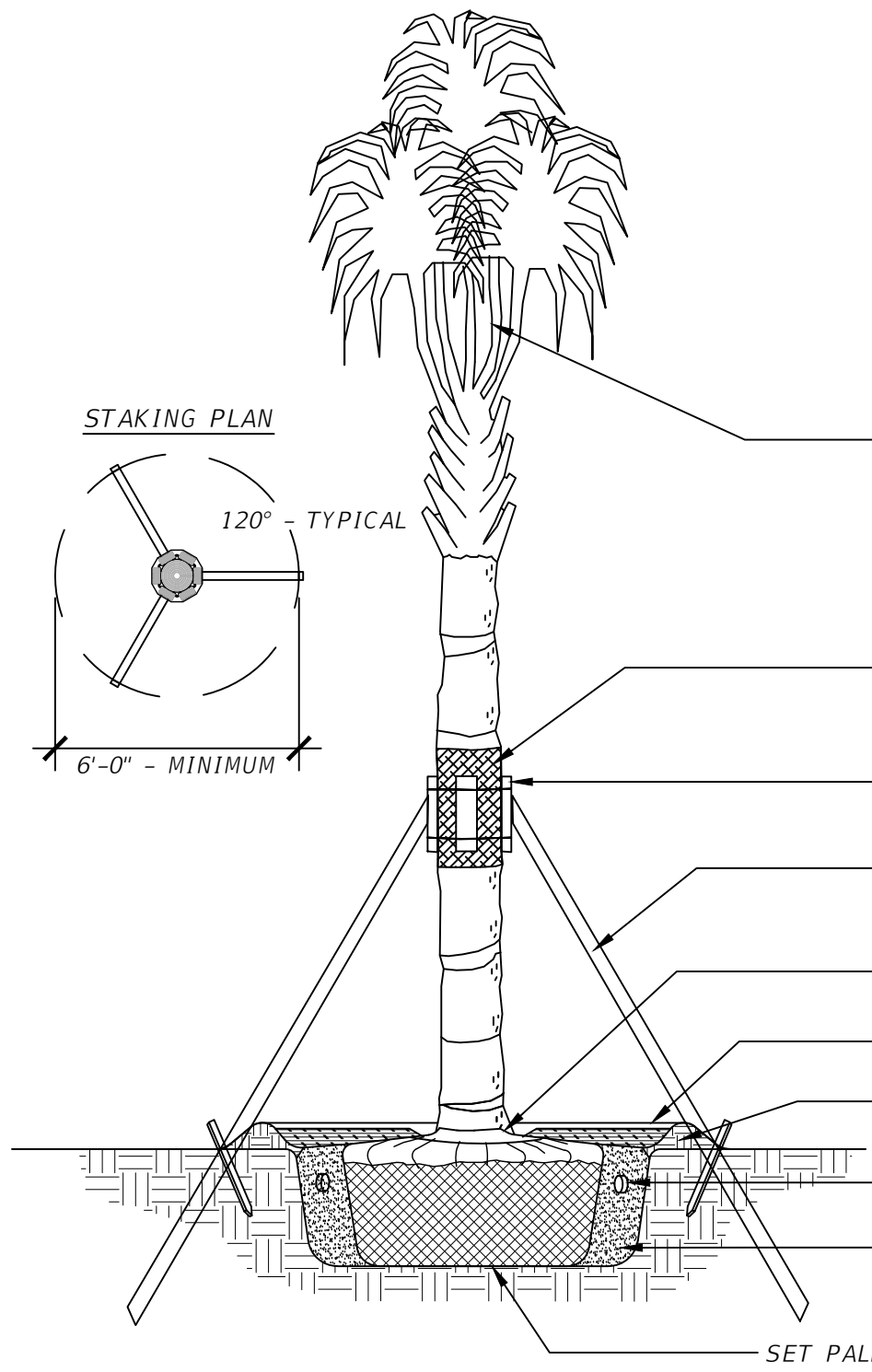
SET TREES AND PALMS ON FIRM SOIL TO PREVENT SETTLEMENT.

1 AT GRADE PLANTING AREA SECTION
1/2" = 1'-0"

DCA-GR-30

REVISIONS				DAVID R. CONNER, RLA LA0001327 DAVID CONNER + ASSOCIATES 100 E. MADISON ST, SUITE 200 TAMPA, FL 33602 CERT. OF AUTHORIZATION LC0000319	CITY OF TAMPA MOBILITY DEPARTMENT			SHEET NO. LD-16
DATE	DESCRIPTION	DATE	DESCRIPTION		ROAD NO.	COUNTY	FINANCIAL PROJECT ID	
					HILLSBOROUGH		PLANTING DETAILS (2)	

THE OFFICIAL RECORD OF THIS SHEET IS THE ELECTRONIC FILE DIGITALLY SIGNED AND SEALED UNDER RULE 61G10-11.011 F.A.C.



CROWN AND TRUNK
 PALM FRONDS SHALL BE TIED UP UNTIL AFTER PLANTING. TIES SHALL BE REMOVED AFTER PLANTING AS DIRECTED IN THE FIELD AND AGREED UPON BETWEEN THE OWNER, LANDSCAPE ARCHITECT AND LANDSCAPE CONTRACTOR SUCH THAT THE PALM IS FULLY ACCLIMATED TO THE PROJECT SITE.

REMOVE ALL DEAD OR BROKEN FRONDS. NEVER CUT BUD. ALL TRUNKS SHALL BE PROTECTED DURING TRANSPORT FROM DAMAGE. DAMAGED PALMS WILL BE REJECTED.

TIE FRONDS DURING TRANSPORT. REMOVE ALL TIES AFTER INSTALLATION.

THREE (3) LAYERS OF BURLAP LOOSELY WRAPPED AROUND PALM TO ALLOW AIRFLOW TO TRUNK.

SIX (6) 2" X 4" X 12" P.T. WOOD BATTENS WITH TWO (2) STEEL BANDS TO SECURE BATTENS. PAINT DARK BROWN.

THREE (3) 2" X 4" P.T. WOOD BRACES TOE NAIL TO BATTENS. DRIVE BRACES INTO UNDISTURBED EARTH. PAINT DARK BROWN.

SET TOP OF ROOT BALL 2" ABOVE FINISH GRADE.

2"-3" MULCH, DO NOT PLACE MULCH AGAINST TRUNK OF PALM

6" SOIL BERM

TIME-RELEASE FERTILIZER. PROVIDE TABLET IN QUANTITY RECOMMENDED BY MANUFACTURER FOR SIZE OF TREE.

12" PLANTING SOIL AROUND PERIMETER OF ROOT BALL.
 PLANT BACKFILL: 1 PART PLANTING SOIL, 4 PARTS NATIVE SOIL

SET PALM ROOT BALL ON STABLE NATIVE SOIL TO PREVENT SETTLING.

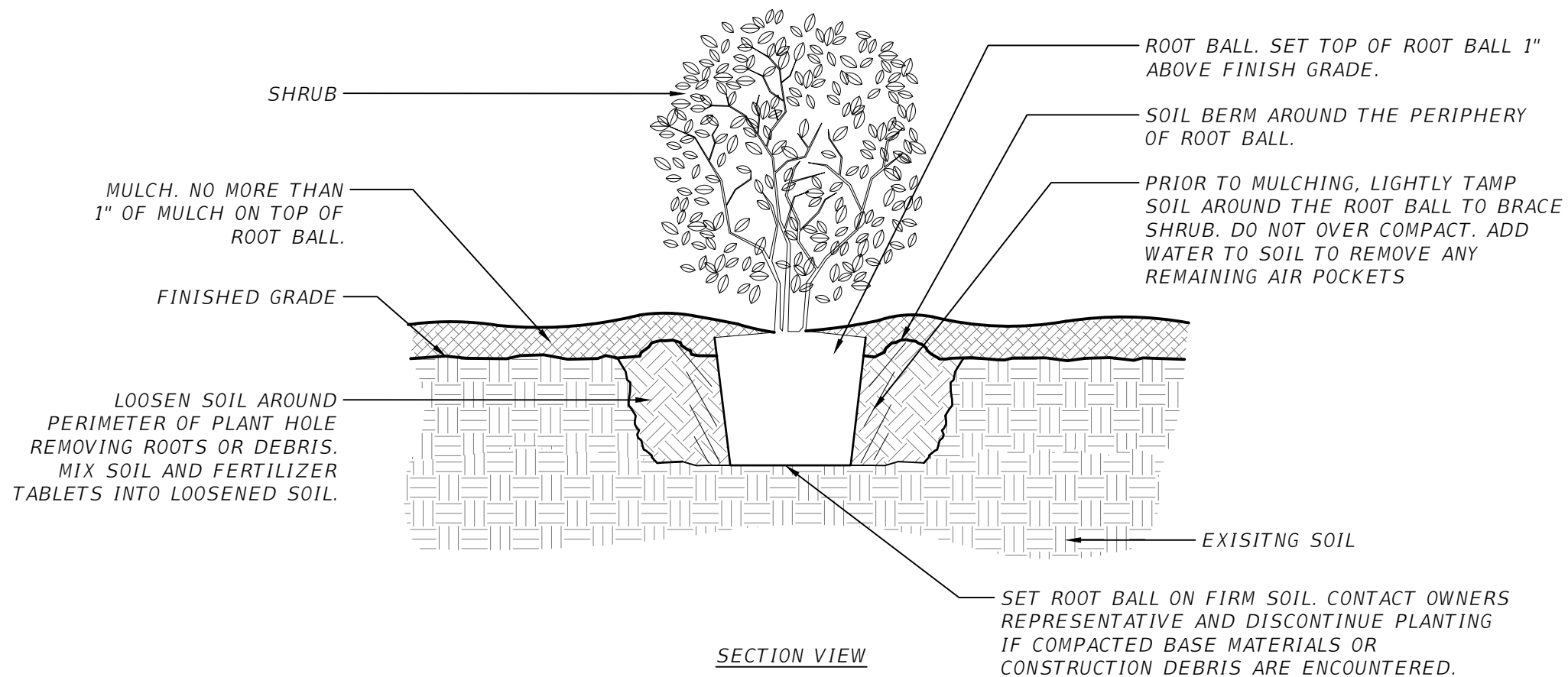
NOTE: APPLY PRE-EMERGENT HERBICIDE PRIOR TO APPLYING MULCH

1 PALM STAKING
 1/2" = 1'-0"

003293-25

REVISIONS				DAVID R. CONNER, RLA LA0001327 DAVID CONNER + ASSOCIATES 100 E. MADISON ST, SUITE 200 TAMPA, FL 33602 CERT. OF AUTHORIZATION LC0000319	CITY OF TAMPA MOBILITY DEPARTMENT			SHEET NO. LD-17
DATE	DESCRIPTION	DATE	DESCRIPTION		ROAD NO.	COUNTY	FINANCIAL PROJECT ID	
					HILLSBOROUGH		PLANTING DETAILS (3)	

THE OFFICIAL RECORD OF THIS SHEET IS THE ELECTRONIC FILE DIGITALLY SIGNED AND SEALED UNDER RULE 61G10-11.011 F.A.C.



NOTE: APPLY PRE-EMERGENT HERBICIDE PRIOR TO APPLYING MULCH

1

SHRUB - MODIFIED SOIL

3/4" = 1'-0"

DCA-GR-06

REVISIONS				DAVID R. CONNER, RLA LA0001327 DAVID CONNER + ASSOCIATES 100 E. MADISON ST, SUITE 200 TAMPA, FL 33602 CERT. OF AUTHORIZATION LC0000319	CITY OF TAMPA MOBILITY DEPARTMENT			SHEET NO. LD-18
DATE	DESCRIPTION	DATE	DESCRIPTION		ROAD NO.	COUNTY	FINANCIAL PROJECT ID	
					HILLSBOROUGH		<i>PLANTING DETAILS (4)</i>	