



City of Tampa

Jane Castor, Mayor

Contract Administration

Michael W. Chucran, Director

306 East Jackson Street, 4N

Tampa, FL 33602

Office (813) 274-8116

Fax: (813) 274-7368

ADDENDUM 2

Via E-Mail

DATE: February 8, 2022

Contract: 21-C-00039; Wastewater Tuberculated Gravity Pipeline Rehabilitation by CIPP FY21

Bidders on the above referenced project are hereby notified that the following addendum is made to the Contract Documents. BIDS TO BE SUBMITTED SHALL CONFORM TO THIS NOTICE.

Item 1: The bid opening date is hereby changed to February 22, 2022.

Item 2: Replace Proposal page P-2 with the attached pages P-2R through P-3R.

Item 3: Add the following to the Contract Items:

CONTRACT ITEM 4600 SERIES - CAST IRON MANHOLE FRAME AND COVER

The work includes all brick masonry, furnishing frames and covers, and setting frames in mortar to the lines and grades shown on the Plans, existing, or furnished by the Engineer.

The quantity of Cast Iron Manhole Frame and Cover units to be measured for payment will be the actual number of such units installed in the work.

Payment for Cast Iron Manhole Frame and Cover units will be made at the Contract Item Unit Price per frame and cover.

Item 4: Contract Item 9000 Series: Delete the third paragraph in its entirety.

Item 5: Replace plan Sheet No. 19 with the attached plan Sheet No. 19.

All other provisions of the Contract Documents and Specifications not in conflict with this Addendum shall remain in full force and effect. Questions are to be e-mailed to ContractAdministration@tampagov.net.

Jim Greiner

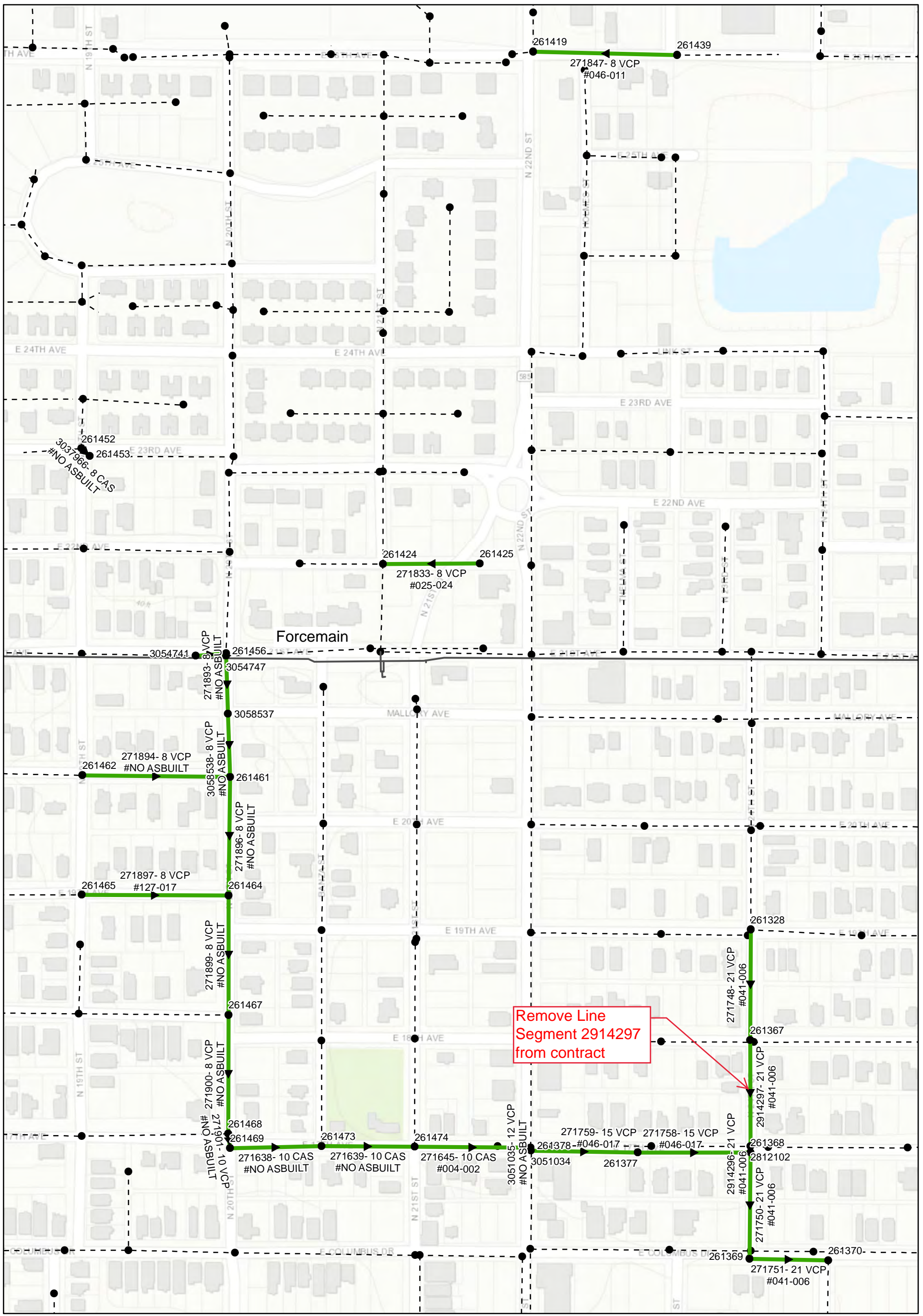
Jim Greiner, P.E., Contract Management Supervisor

**Contract; 21-C-00039
Wastewater Tuberculated Gravity Pipeline Rehabilitation by CIPP FY21**

Item No.	Item	Quantity	Unit	Unit Price in Words	Unit Price	Total
100	Contingency	1	LS	one hundred thousand dollars	\$ 100,000.00	\$100,000.00
102	MOT	1	LS			
0408.2360	Cured in Place Pipe for 8" Dia. Gravity Sewer (.236 inch thick)	21925	LF			
0410.2950	Cured in Place Pipe for 10" Dia. Gravity Sewer (.295 inch thick)	1993	LF			
0412.2950	Cured in Place Pipe for 12" Dia. Gravity Sewer (.295 inch thick)	1112	LF			
0415.2950	Cured in Place Pipe for 15" Dia. Gravity Sewer (.295 inch thick)	488	LF			
0418.3540	Cured in Place Pipe for 18" Dia. Gravity Sewer (.354 inch thick)	731	LF			
0421.2950	Cured in Place Pipe for 21" Dia. Gravity Sewer (.413 inch thick)	1071	LF			
0601.08	Hydraulic Cleaning & Inspection of 8" Dia. Gravity Sewer	18341	LF			
0601.10	Hydraulic Cleaning & Inspection of 10" Dia. Gravity Sewer	1213	LF			
0601.12	Hydraulic Cleaning & Inspection of 12" Dia. Gravity Sewer	251	LF			
0601.15	Hydraulic Cleaning & Inspection of 15" Dia. Gravity Sewer	488	LF			
0601.18	Hydraulic Cleaning & Inspection of 18" Dia. Gravity Sewer	626	LF			
0601.21	Hydraulic Cleaning & Inspection of 21" Dia. Gravity Sewer	824	LF			
0602.08	Additional Mechanical Cleaning & Inspection of 8" Dia. Gravity Sewer	200	LF			
0602.10	Additional Mechanical Cleaning & Inspection of 10" Dia. Gravity Sewer	50	LF			
0602.12	Additional Mechanical Cleaning & Inspection of 12" Dia. Gravity Sewer	50	LF			
0602.15	Additional Mechanical Cleaning & Inspection of 15" Dia. Gravity Sewer	50	LF			
0602.18	Additional Mechanical Cleaning & Inspection of 18" Dia. Gravity Sewer	50	LF			

**Contract; 21-C-00039
Wastewater Tuberculated Gravity Pipeline Rehabilitation by CIPP FY21**

0602.21	Additional Mechanical Cleaning & Inspection of 21" Dia. Gravity Sewer	50	LF		
0621.08	Cleaning & Inspection of Tuberculated Cast Iron or Ductile Iron Sewer , 8" Dia.	3599	LF		
0621.10	Cleaning & Inspection of Tuberculated Cast Iron or Ductile Iron Sewer , 10" Dia.	780	LF		
0621.12	Cleaning & Inspection of Tuberculated Cast Iron or Ductile Iron Sewer , 12" Dia.	861	LF		
0621.15	Cleaning & Inspection of Tuberculated Cast Iron or Ductile Iron Sewer , 15" Dia.	10	LF		
0621.18	Cleaning & Inspection of Tuberculated Cast Iron or Ductile Iron Sewer, 18" Dia.	105	LF		
0621.21	Cleaning & Inspection of Tuberculated Cast Iron or Ductile Iron Sewer, 21" Dia.	247	LF		
0700	Disposal of Debris	26	CY		
2050	Reconnect Service Connections	407	EA		
2051.08	Chemical Grouting Lateral after Lining in 8" Gravity Sewer	360	EA		
2051.10	Chemical Grouting Lateral after Lining in 10" Gravity Sewer	34	EA		
2051.12	Chemical Grouting Lateral after Lining in 12" Gravity Sewer	1	EA		
2051.15	Chemical Grouting Lateral after Lining in 15" Gravity Sewer	1	EA		
2051.18	Chemical Grouting Lateral after Lining in 18" Gravity Sewer	10	EA		
2051.21	Chemical Grouting Lateral after Lining in 21" Gravity Sewer	1	EA		
4600.1p	Small Size manhole frame and cover replacement (in pavement)	20	EA		
9000	Sewer Bypass with Tanker Truck	500	Hrs		
9050.08	Sewage Bypass Pumping for 8" Dia. Sewer	21925	LF		
9050.10	Sewage Bypass Pumping for 10" Dia. Sewer	1943	LF		
9050.12	Sewage Bypass Pumping for 12" Dia. Sewer	1112	LF		
9050.15	Sewage Bypass Pumping for 15" Dia. Sewer	488	LF		
9050.18	Sewage Bypass Pumping for 18" Dia. Sewer	731	LF		
9050.21	Sewage Bypass Pumping for 21" Dia. Sewer	1071	LF		
				Total	



0 0.075 0.15 0.3 Miles

FY21 Wastewater Tuberculated Gravity Pipeline Rehabilitation

City of Tampa Wastewater Department

- Ex Manhole (no rehabilitation required)
- PS Pump Station
- PS Private Pump Station
- ➔ Proposed Lining Area
- - - Ex Wastewater (no rehabilitation required)
- Wastewater Force Main
- Private Wastewater Force Main



Sheet No.
19

