



City of Tampa

Jane Castor, Mayor

Contract Administration

Michael W. Chucran, Director

306 East Jackson Street, 4N

Tampa, FL 33602

Office (813) 274-8116

Fax: (813) 274-7368

ADDENDUM 1

DATE: March 6, 2023

Contract: 22-C-00001; Tampa Multimodal Network and Safety Improvements Project (West River District BUILD)

Item 1 – Attached are copies of the Pre-Submission Conference Transcript, Chat, and Presentation Files.

Item 2 – Members of the public, including West Tampa CRA representative(s), may attend the presentations made by the Short-Listed Firms. No voting occurs at this meeting.

Item 3 – Specific City persons who may be involved in the review, scoring, short-listing, and selection of firms pursuant to the RFQ/RFP may include but are not limited to Brad Baird, Michael Perry, Kevin Henika, Gregory Hart, Justin Vaske, Tony Monk, Brad Suder, Nina Mabileau, Calvin Hardie, Vik Bhide, Jean Duncan and Lara Bouck.

Item 4 – Subcontractor Outreach Event(s) may be conducted jointly or individually by the Short-Listed firms. A City of Tampa Subcontractor Outreach Event is scheduled for 2-5 PM May 4, 2023 at the Tampa Convention Center.

Item 5 - In the RFP, pages 19-20 of 43; Section V. H. 2. Add to both the 60% and 100% submittals requirement to include the AutoCAD Civil 3D model as a deliverable.

Item 6 – In the RFP, page 31 of 43; Section VI. C. replace “See FDM Part 3; Chapter 301;” with “See FDM Part 9; Chapter 901;”

Item 7 – Replace RFQ Section 3.3(b) with:

“Quality Manager (QM) –The QM shall be responsible for complying with all applicable requirements, the development and adherence to the Design-Build Quality Management Plan (QMP). The QM shall be responsible for the quality of the work performed and of the inspection and testing of all materials used on the Project, to include monitoring of the contractor's Construction Quality Control Plan (CQCP). The QM shall ensure adherence to environmental permits and commitments and that all work and materials, testing and sampling, and work zones are in conformance with the Contract and the "released for construction" (RFC) plans and specifications. The QM shall also be responsible for certification of project

compliance to the Contract Requirements and certification for monthly Application of Payment. This individual shall be a registered, licensed, Professional Engineer in the State of Florida.”

Item 8 – The following Quality Management Plan (QMP) language is added to the RFP, Section V.

“Quality Management Plan (QMP):

- **Design:**

The D-B Firm shall be responsible for the professional quality, technical accuracy and coordination of all surveys, designs, drawings, specifications, geotechnical and other services furnished by the D-B Firm under this contract.

The D-B Firm shall provide a Design Quality Management Plan (DQMP), which describes the Quality Control (QC) procedures to be utilized to verify, independently check, and review all design drawings, specifications, and other documentation prepared as a part of the contract. In addition, the QMP shall establish a quality validation program to confirm that the QC procedures are followed. The D-B Firm shall describe how the checking and review processes are to be documented to verify that the required procedures were followed. The DQMP may be one utilized by the D-B Firm, as part of their normal operation or it may be one specifically designed for this Project. The D-B Firm shall submit a DQMP within fifteen (15) working days following issuance of the written Notice to Proceed. A marked up set of prints from the QC review will be sent in with each review submittal. The responsible Professional Engineers or Professional Surveyor that performed the QC review, as well as the Quality Manager (QM) will sign a statement certifying that the review was conducted.

The D-B Firm shall, without additional compensation, correct all errors or deficiencies in the surveys, designs, drawings, specifications and/or other services.

- **Construction:**

The D-B Firm shall be responsible for developing and maintaining a Construction Quality Control Plan (CQCP) in accordance with Section 105 of Standard Specifications which describes their Quality Control procedures to verify, check, and maintain control of key construction processes and materials. The CQCP shall be submitted to the City’s Project Manager for approval, a minimum of twenty (20) working days prior to the mobilization of any field construction staff or delivery of construction materials. No field construction activity shall be allowed to commence until written approval has been provided by the City’s Project Manager to the D-B Firm.

The sampling, testing, and reporting of all materials used shall be in compliance with the City Materials Testing Frequency (P-A22). All other materials not covered in the City Materials Testing Frequency shall follow FDOT Standard Specification testing requirements, and the FDOT Sampling, Testing and Reporting Guide (STRG).

The City, and FHWA, as necessary, shall maintain its rights to inspect construction activities and request any documentation from the D-B Firm to ensure quality products and services are being provided.”

Item 9 – RFI responses (numerically ordered):

1. Can the City of Tampa please provide the existing plans for the following bridges?
 - Bridge #105501 (Brorein Street Draw)
 - Bridge #105500 (Platt Street Bridge)
 - Bridge #100332 (Selmon Viaduct Westbound)
 - Bridge #100333 (Selmon Viaduct Eastbound)

Response: The Brorein Bridge Improvement plans are included in RFP Reference document R-4. Other available bridge plans can be provided to the three short-listed firms. The Platt Street Bridge is under the jurisdiction of Hillsborough County. The Selmon Viaduct is under the jurisdiction of the Tampa Hillsborough Expressway Authority (THEA). The THEA procurement for the South Selmon is still open and changes may still be likely. Offerors should coordinate directly with THEA for any documents they wish to provide.

2. Per 3.0 Contents of Statement of Qualifications > 3.3 Offerors Team Structure > (b) Quality Assurance Manager (p. 10) – “This individual shall be from an independent firm that has no contractual relationship and no involvement in construction operations (to include QC inspection and testing) for the Project,” is the City of Tampa going to contract with the firm of the Quality Assurance Manager in lieu of the Lead Contractor and Lead Designer?

Response: The offerors will not be responsible for providing a Quality Assurance Manager (QAM). However, the offerors *will* be responsible for providing a Quality Manager (QM) with direct project quality responsibility. Conversely, the QAM will be provided by the City and will be independent of the project team. See Items 7 and 8 of this Addendum.

3. Per 5.0 Statement of Qualifications Submittal Requirements (p. 15) – “Offerors must provide Form A305 or equivalent data,” what information should Offerors provide in lieu of having access to this form?

Response: Form A305 is an AIA document. In lieu of using the Form, firms may submit data corresponding to A305’s headings.

4. Narrative Content: Per Section 5.0 of the RFQ, the Statement of Qualifications shall include Narratives addressing:
 - Offeror's Team, Key Personnel, and Organizational Chart
 - Prior Experience of the Offeror's Team

Please clarify how narratives on these two topics will be evaluated in the scoring, in addition to the Forms Q-A6, Q-A7a, and Q-A7b to be provided in the Appendix.

Response: Emphasis will be placed upon the Team members’ experience on projects of similar scope and size.

5. Offerors Workload & Availability: Is the Offeror only required to submit the Design-Builder's (i.e. Prime Contractor's) side of the workload, or shall this workload/availability information be required from the companies of all Key Personnel?

Response: The Workload and Availability of the Prime Contractor, all Design personnel plus other Key project Personnel are all required so the City is presented with a complete picture of each Offeror's proposed Design-Build Team for this specific project.

6. QAM Role: Please confirm that the Quality Assurance Manager (QAM), while independent from the construction QC scope, will still need to be contracted with the Design-Builder.

Response: See Addendum Items 7 and 8.

7. QAM Role: Can the City please clarify the scope of work required by the Quality Assurance Manager (QAM)? Will the QAM be required to provide oversight to the City's Quality Assurance/CEI inspection staff in addition to overseeing the Contractor's Quality Control program?

Response: See Addendum Item 7. No, the Quality Manager will not provide oversight to the City's QAM/CEI staff.

8. QC Testing: In the event of a conflict between City of Tampa and FDOT testing requirements, which requirements will take precedence? Will you provide an Order of Precedence for Contract Documents in the final RFP?

Response: For purposes of the RFQ and RFP, firms may assume that the more stringent requirement will be imposed under such circumstances.

9. SOQ Size; Is there a size Limit:

Response: No size limit has been established.

10. The RFQ indicates that Florida DOC registration information should be provided, as well as DBPR. Should DOC information appear on Attachment 5?

Response: Yes, include this information about the Florida Document Number which lists detailed information about the specific business entity or registration associated with the assigned Department of State identification number, on Attachment Q-A5.

All parts of the RFQ & RFP not in conflict with this Addendum shall remain in full force and effect.

Questions are to be e-mailed to ContractAdministration@tampagov.net.



Jim Greiner, P.E., Contract Management Supervisor

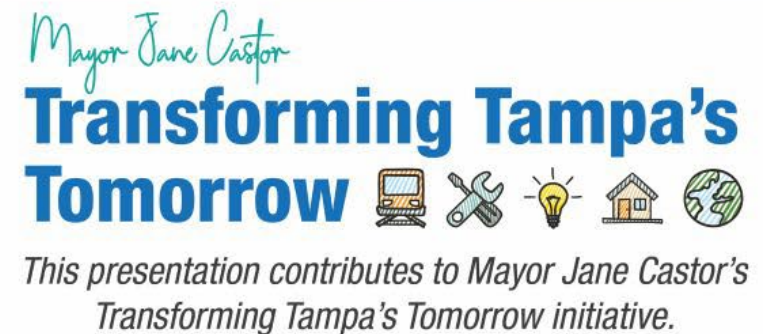
Tampa Multi-Modal Network and Safety Improvements

West River District (BUILD Grant)

Procurement Pre-Submission Meeting

WELCOME

February 17, 2023



WEST RIVER DISTRICT BUILD GRANT PROJECT



WEST RIVER DISTRICT BUILD GRANT PROJECT

RFQ Elements:

FDOT Pre-Qualifications:

Design

- 3.1 Minor Roadway Design
- 4.1.2 Minor Bridge Design
- 7.1 Signing, Pavement Marking and Channelization
- 8.2 Design, Right of Way, Construction Surveying

Construction

- 27 Minor Bridge

Equal Business Opportunity (EBO/DEI) throughout:

- 15% Minimum Aspirational Goal
- Equal Employment Opportunity (EEO)
- Diversity, Equity, and Inclusion (DEI)

City Workforce Development & Apprenticeship Program

Team Composition / Structure

WEST RIVER DISTRICT BUILD GRANT PROJECT

RFQ Scoring:

Experience of Offeror's Team on Complete Streets, Urban/Trail and Coastal Projects - 40%

Experience of Offeror's Team on Design-Build Projects - 20%

Offeror's Key Personnel & Experience - 10%

Historical Evidence of EBO Outreach and Inclusion - 10%

Offeror's Understanding of Project Risks - 10%

Offeror's Workload & Availability – 10%

WEST RIVER DISTRICT BUILD GRANT PROJECT

RFP Elements:

Technical Proposals:

30% Design

- Native AutoCAD
- City standard sheets

Structural components

- Cross Sections / Rendering

Public Project Web Site

Stipends: 2 unsuccessful RFP Offerers, each \$150,000

WEST RIVER DISTRICT BUILD GRANT: SIX PROJECT SEGMENTS

Segment 1 – Multimodal path from Platt St. to Brorein St.

Segment 2 – Multimodal path from Kennedy Blvd. to Palmetto St./Rome Ave.

Segment 3 – Platt St. from Rome Ave. to Bayshore Blvd (Complete Street)

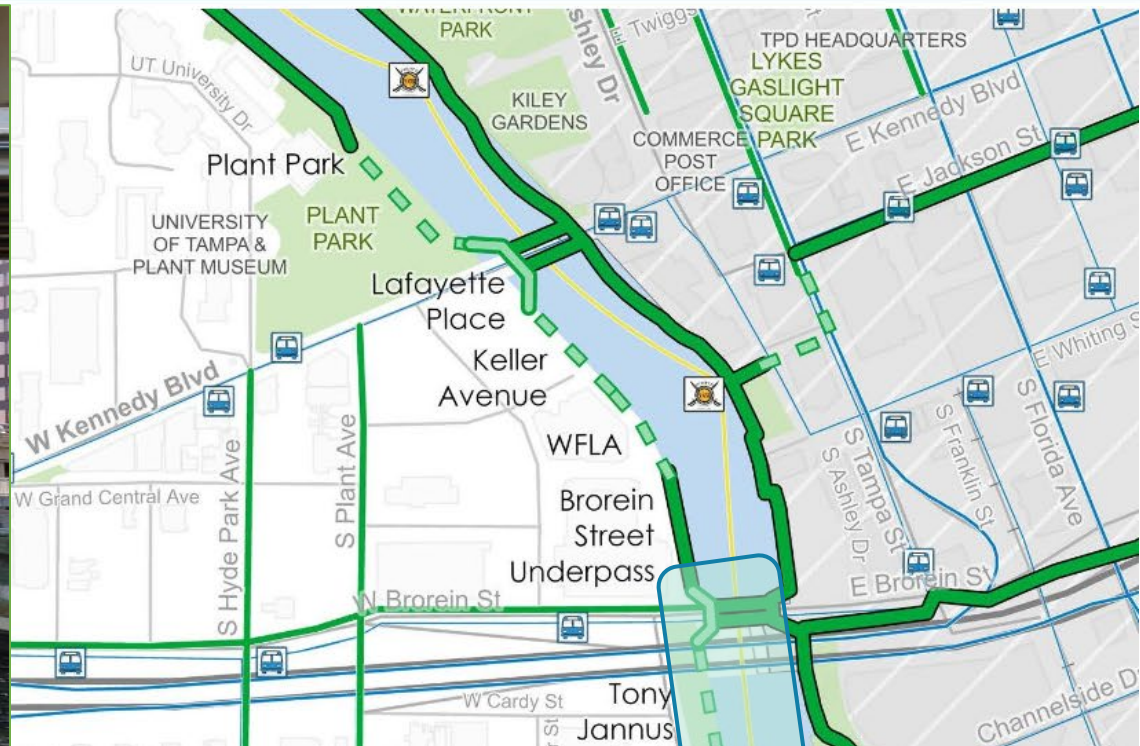
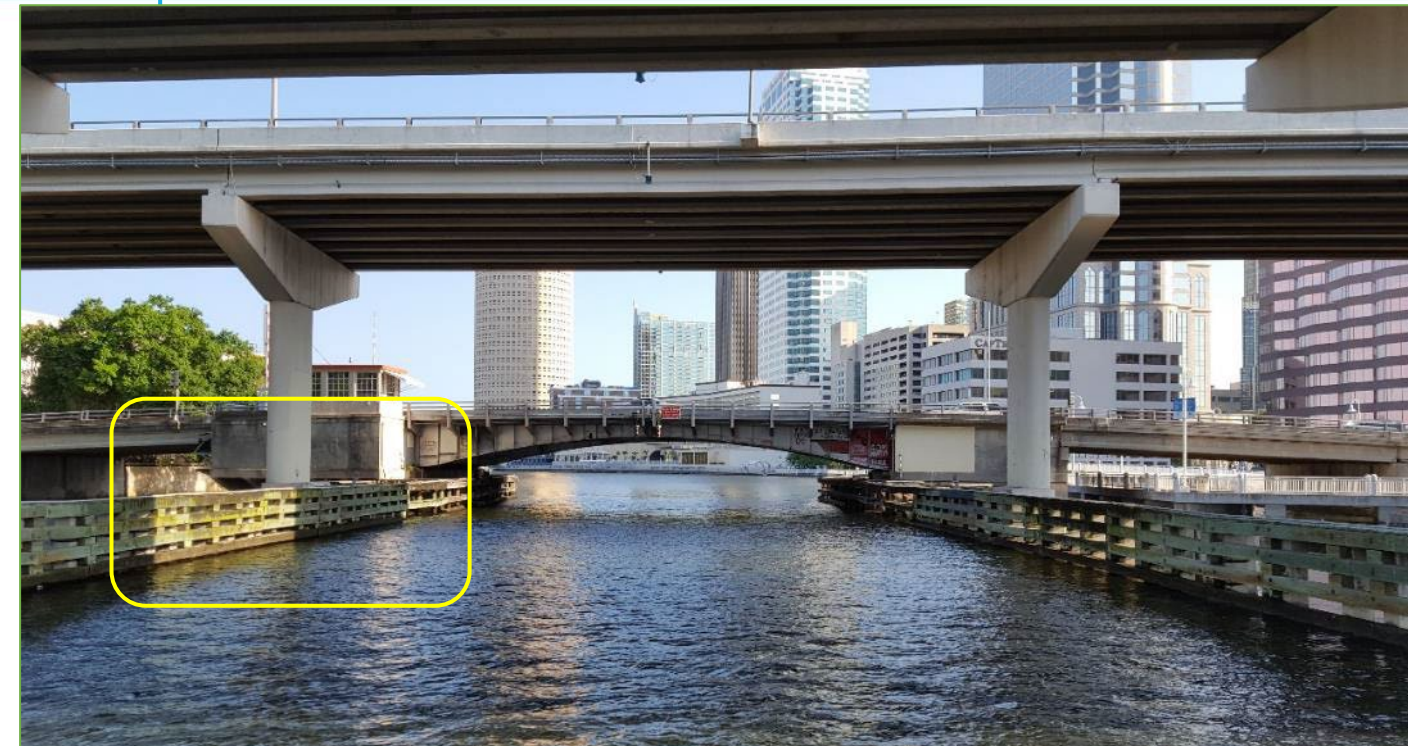
Segment 4 – Rome Ave. from Platt St. to Columbus Dr. (Complete Street)

Segment 5 – Columbus Dr. from Rome Ave. to N. Boulevard (Complete Street)

Segment 6 – Ridgewood Park from Columbus Dr. to North Blvd.



SEGMENT 1: MULTI-MODAL PATH FROM PLATT ST TO BROREIN ST



West river's edge, looking north under the Selmon Expressway and the Brorein St. Bridge.



SEGMENT 1: MULTI-MODAL PATH FROM PLATT ST TO BROREIN ST



Southwest side of the Platt St. Bridge.



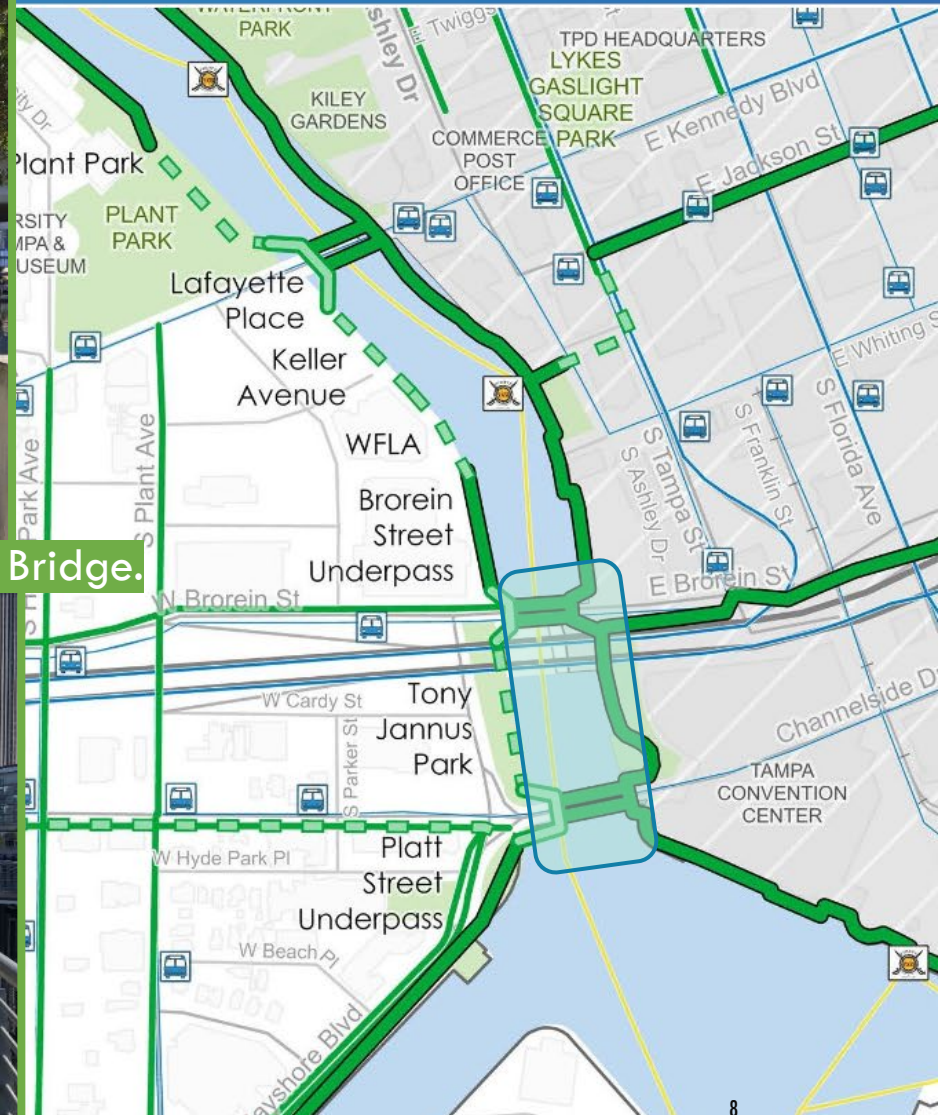
North end of Tony Janus Park at Brorein Bridge.



Existing Tony Janus Park at River.



Existing Manor Riverwalk north of Brorein Bridge.

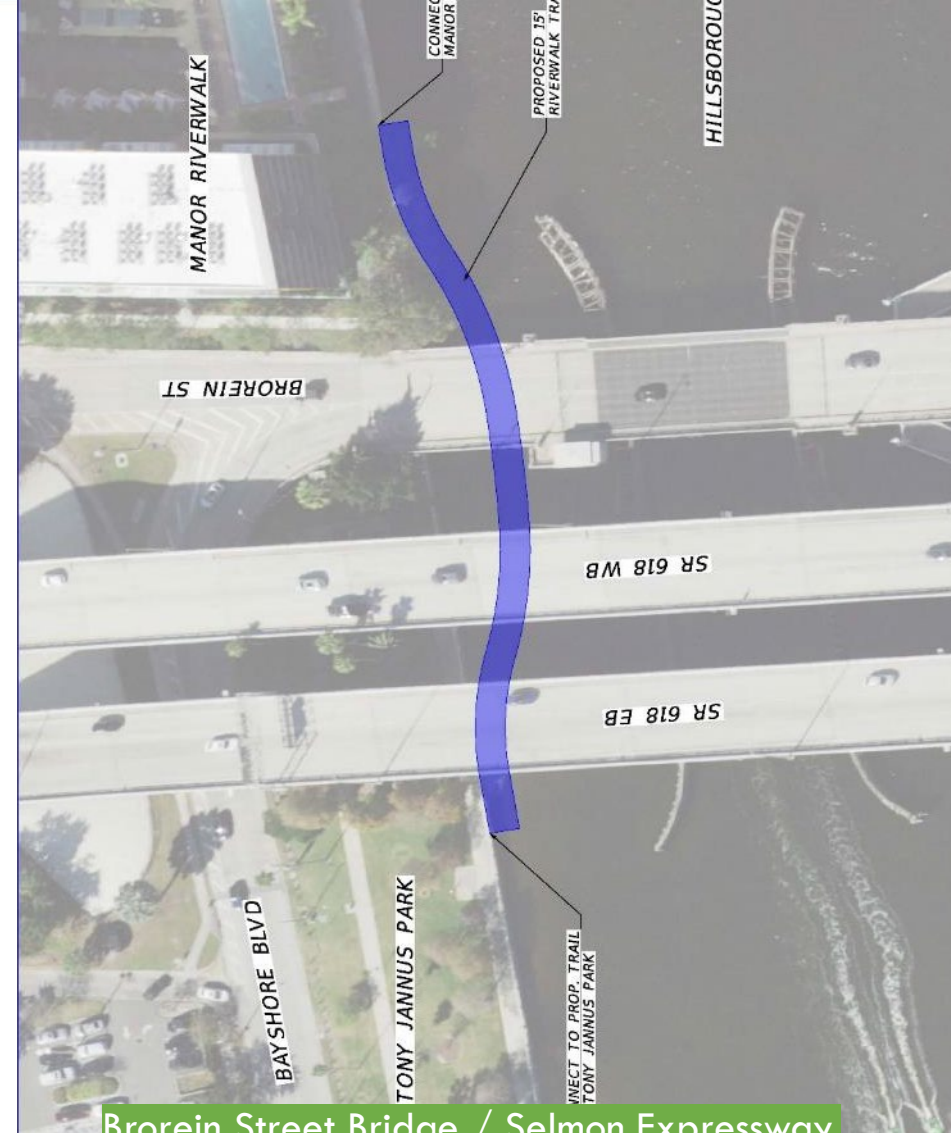
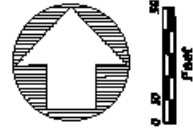


Map of highlighted Segment 1

CONCEPTUAL PEDESTRIAN UNDERPASSES



Platt Street Bridge.



Brorein Street Bridge / Selmon Expressway.

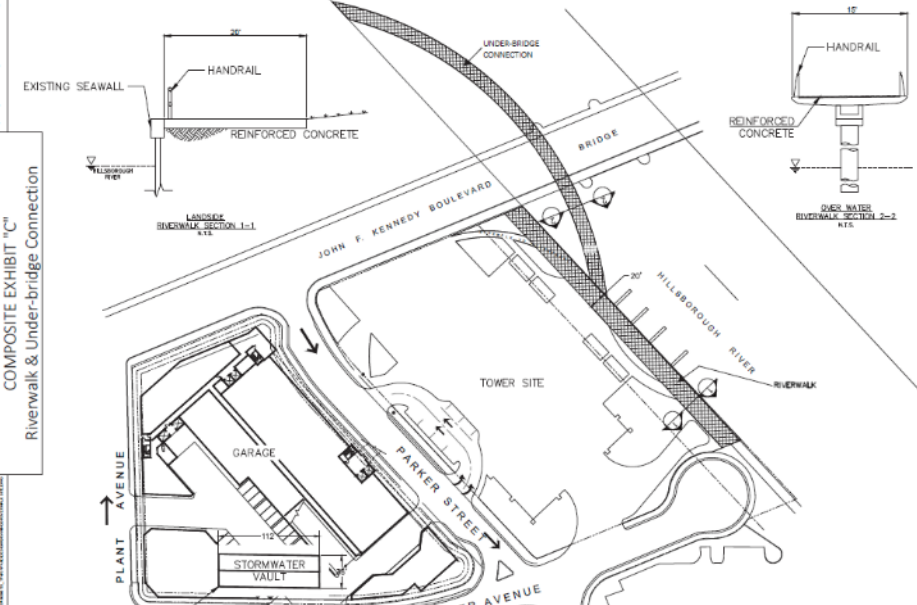
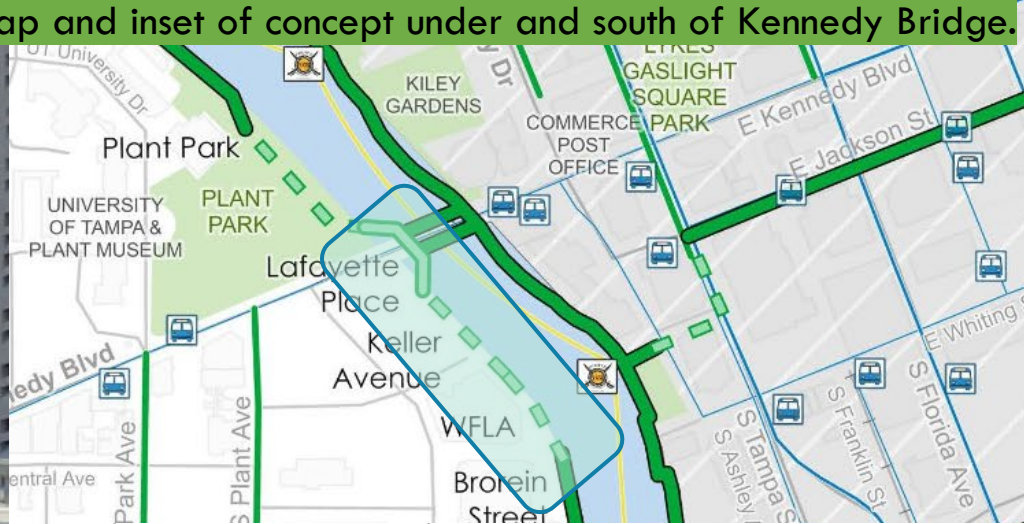
TRAIL SEGMENTS (PRIVATE): TRIBUNE-WFLA/RELATED GROUP



Lafayette Place
COMPOSITE EXHIBIT "C"
Riverwalk & Under-bridge Connection

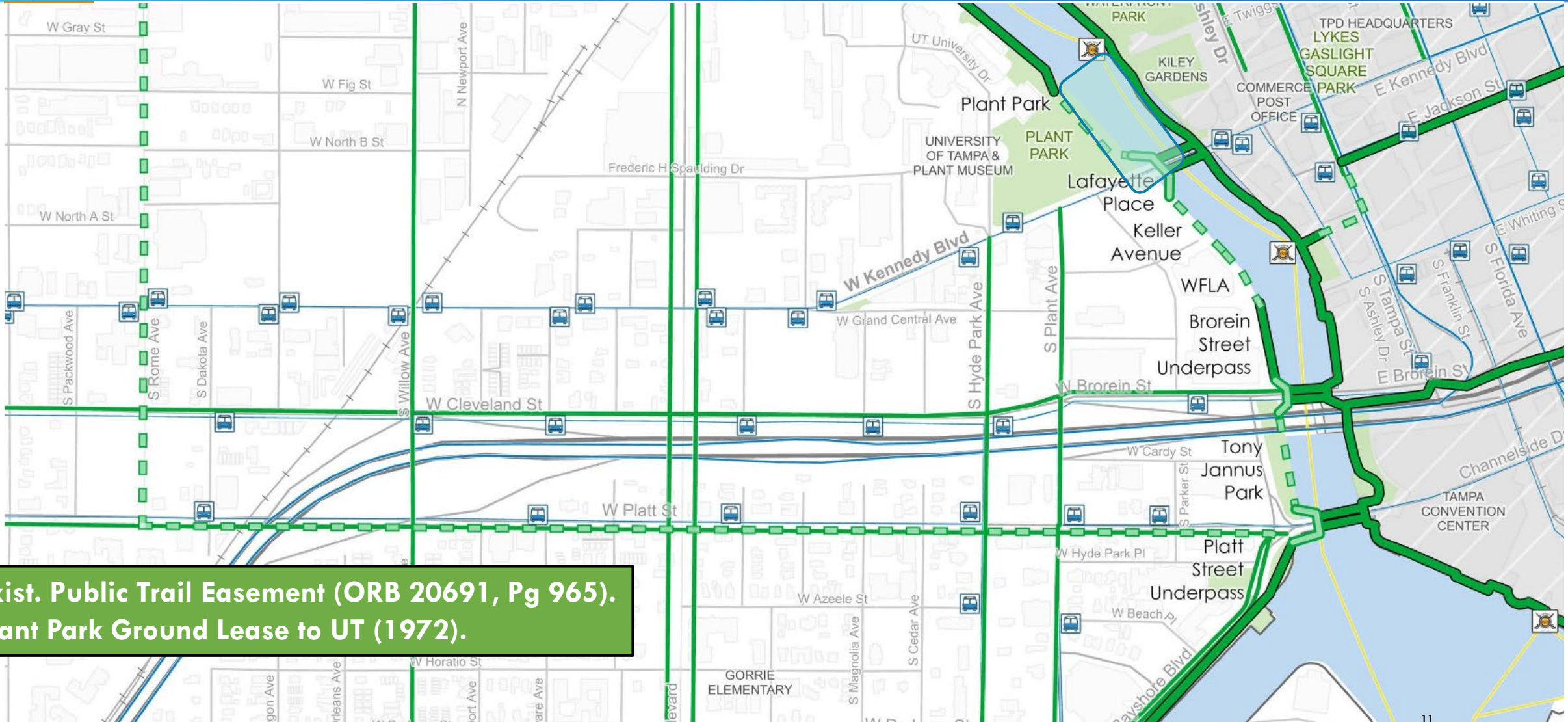


Area map and inset of concept under and south of Kennedy Bridge.



Segments to be completed by others incl. Tribune Co. and Related Group
(Bonus Provision Agreement (2017)).

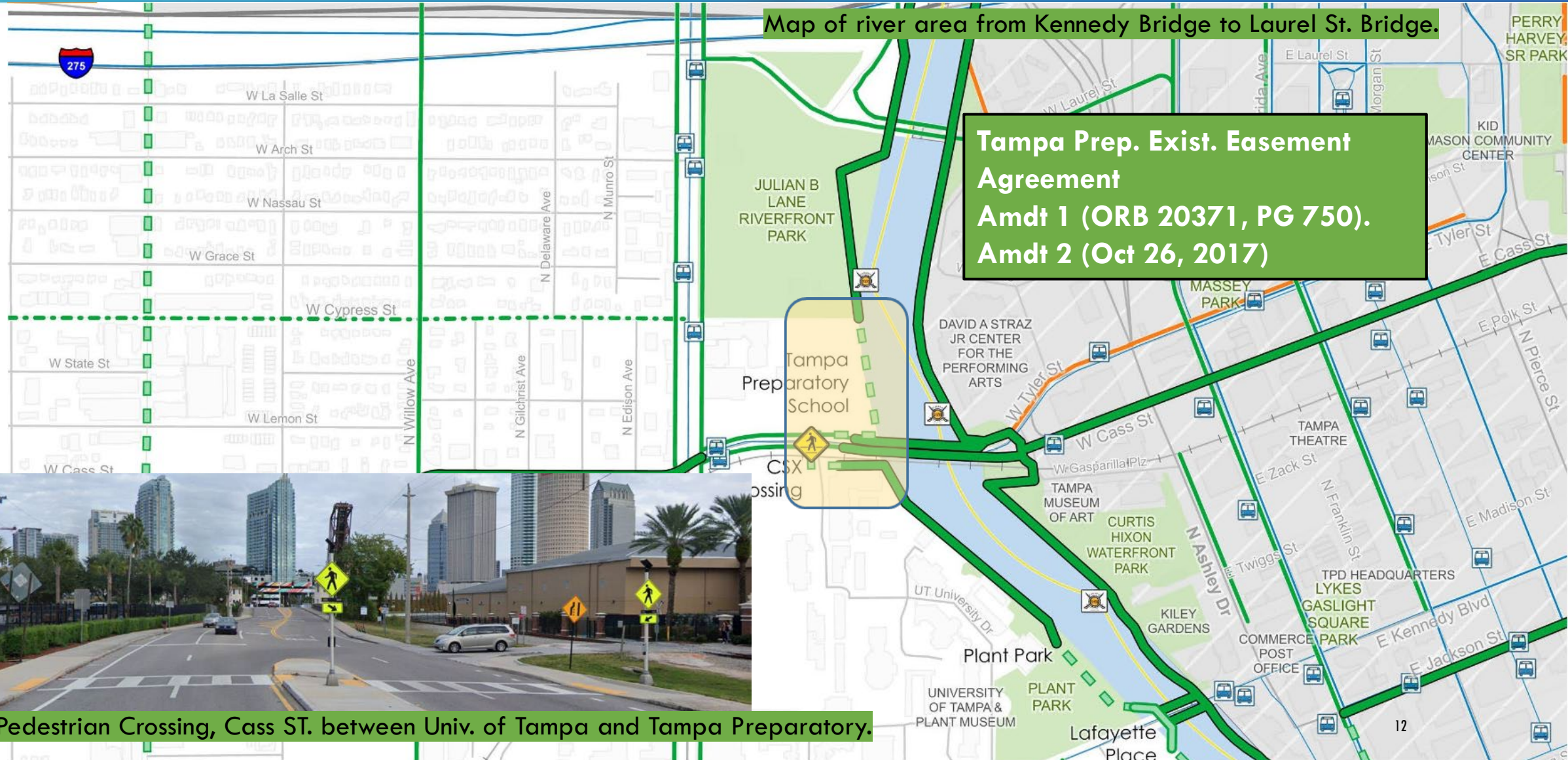
SEGMENT 2: WEST RIVERWALK KENNEDY TO PALMETTO ST/ROME AVE



**Exist. Public Trail Easement (ORB 20691, Pg 965).
Plant Park Ground Lease to UT (1972).**

Map of the river area from Bayshore, south of Platt Bridge to Univ. of Tamp, north of Kennedy Bridge.

SEGMENT 2: MULTI-MODAL PATH KENNEDY TO PALMETTO ST/ROME AVE



Map of river area from Kennedy Bridge to Laurel St. Bridge.

**Tampa Prep. Exist. Easement Agreement
Amdt 1 (ORB 20371, PG 750).
Amdt 2 (Oct 26, 2017)**



Existing Pedestrian Crossing, Cass ST. between Univ. of Tampa and Tampa Preparatory.

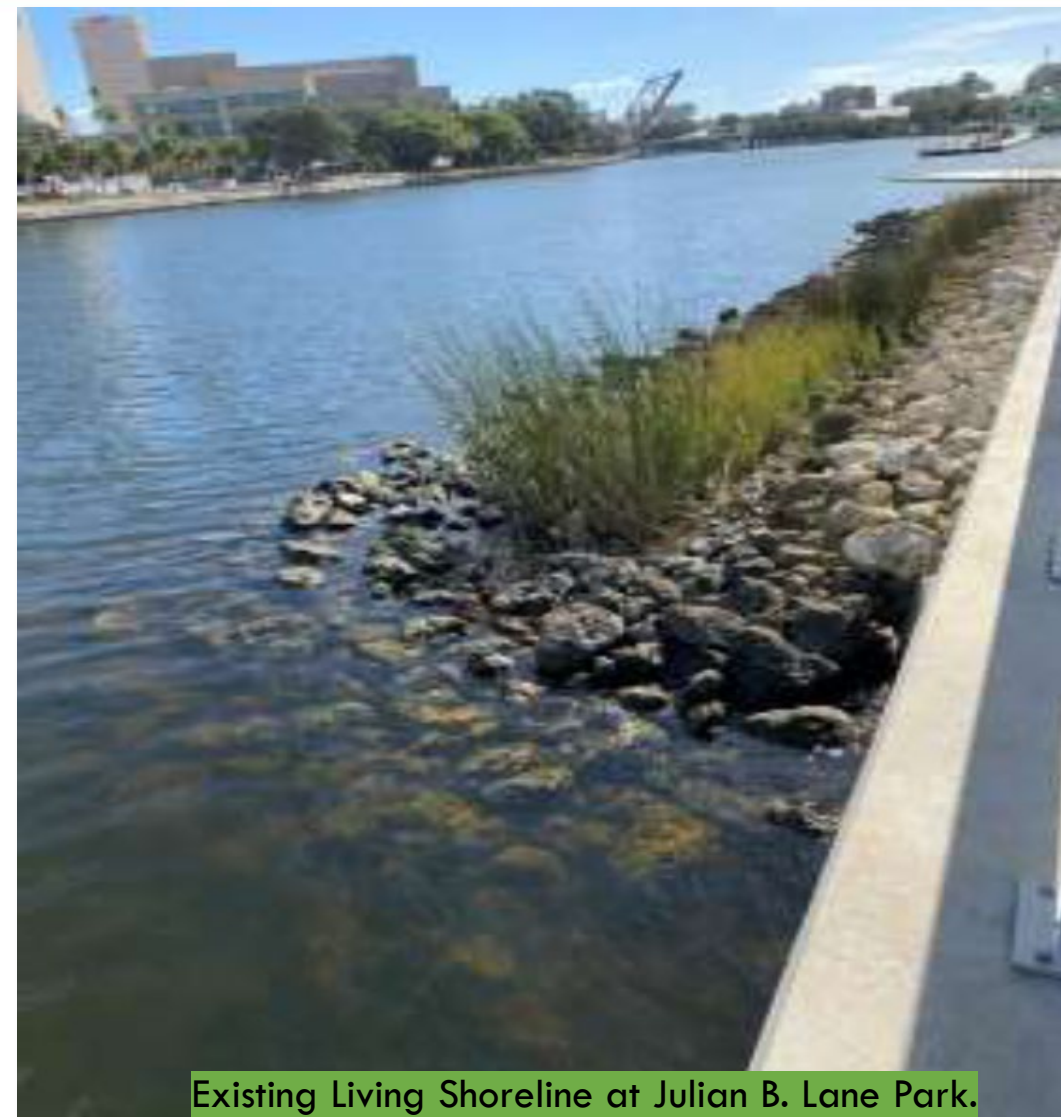
SEGMENTS 1 AND 2: LIVING SHORELINES

Use native vegetation to stabilize shoreline

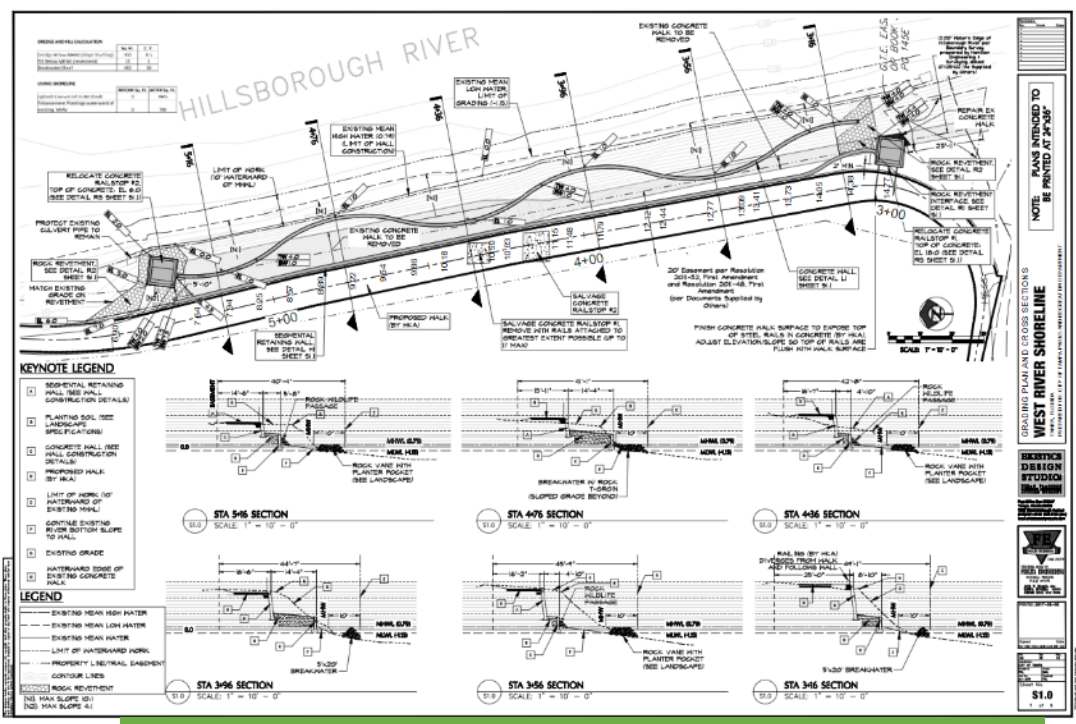
Maintain natural continuity of land-water interface

Enhance shoreline ecological processes

USACE Nationwide Permit #54 or Individual Permit

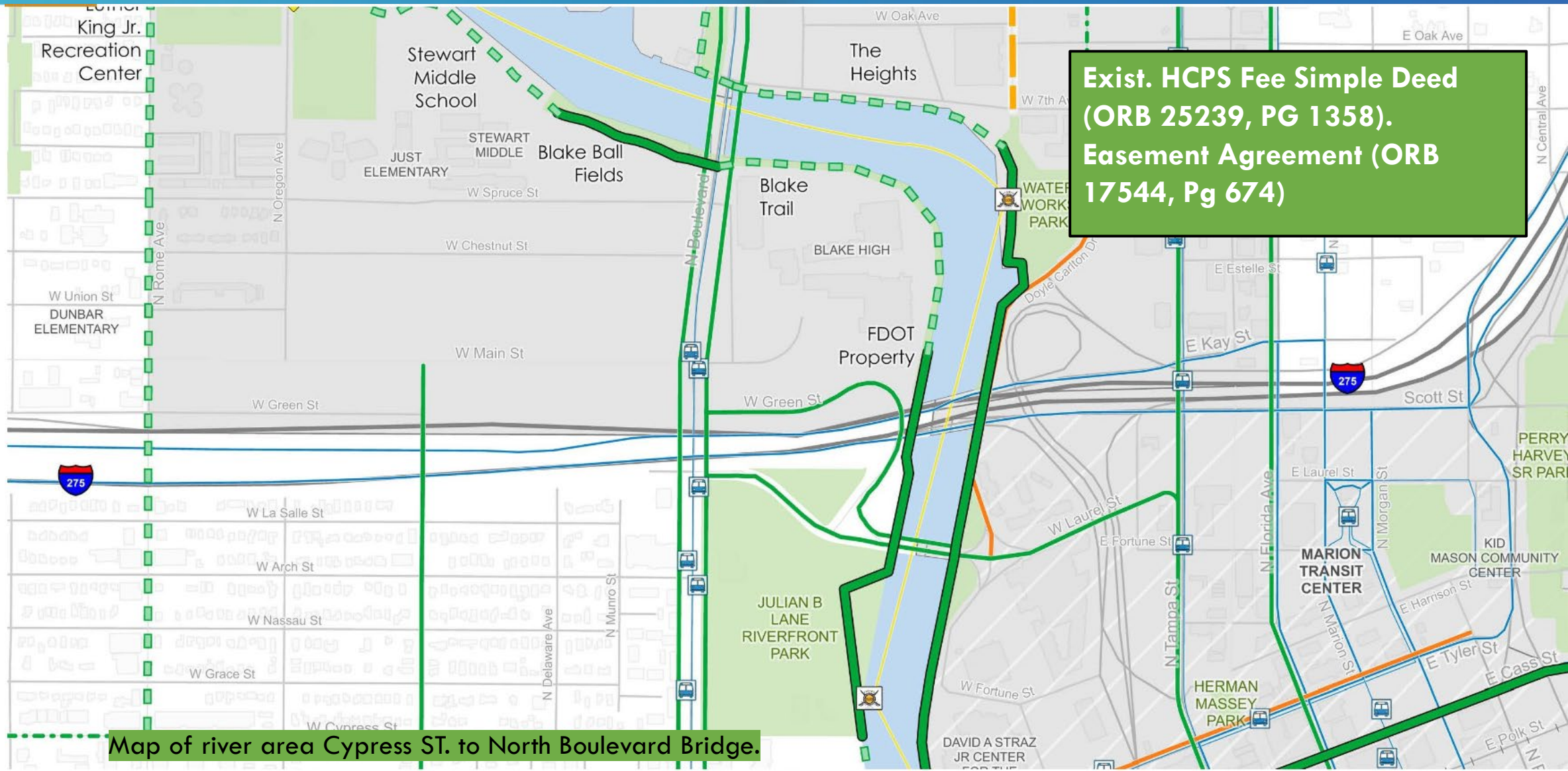


Existing Living Shoreline at Julian B. Lane Park.



Conceptual Trail design at Tampa Preparatory School.

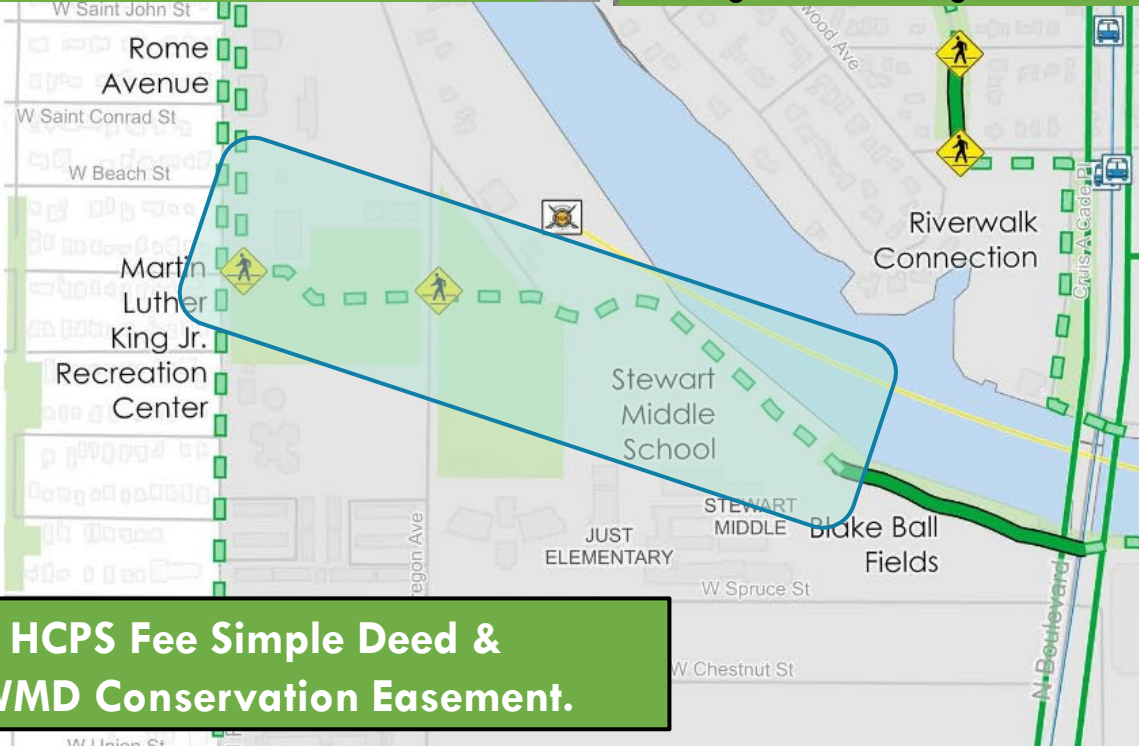
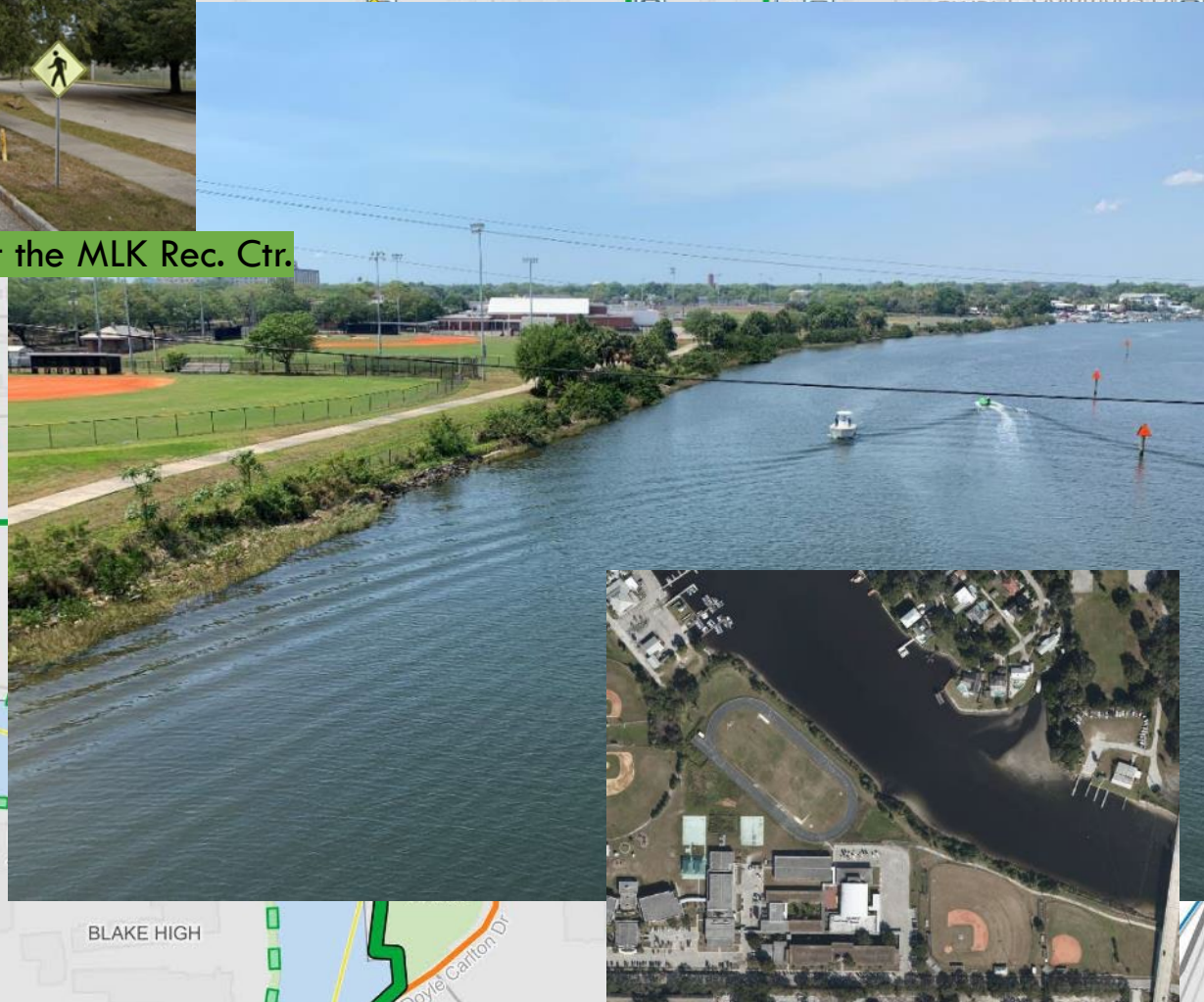
SEGMENT 2: WEST RIVERWALK KENNEDY BLVD TO ROME AVE



**Exist. HCPS Fee Simple Deed (ORB 25239, PG 1358).
Easement Agreement (ORB 17544, Pg 674)**

Map of river area Cypress ST. to North Boulevard Bridge.

SEGMENT 2: MULTI-MODAL PATH KENNEDY TO PALMETTO ST/ROME



Exist. HCPS Fee Simple Deed & SWFWMD Conservation Easement.

Map of the east-west segment between Rome Ave. and the river.

Stewart Middle School Track at the river, looking northwest and inset aerial.

COMMUNITY AMENITIES / ARTWORK

ROME YARD MASTER PLAN AT BUILDOUT

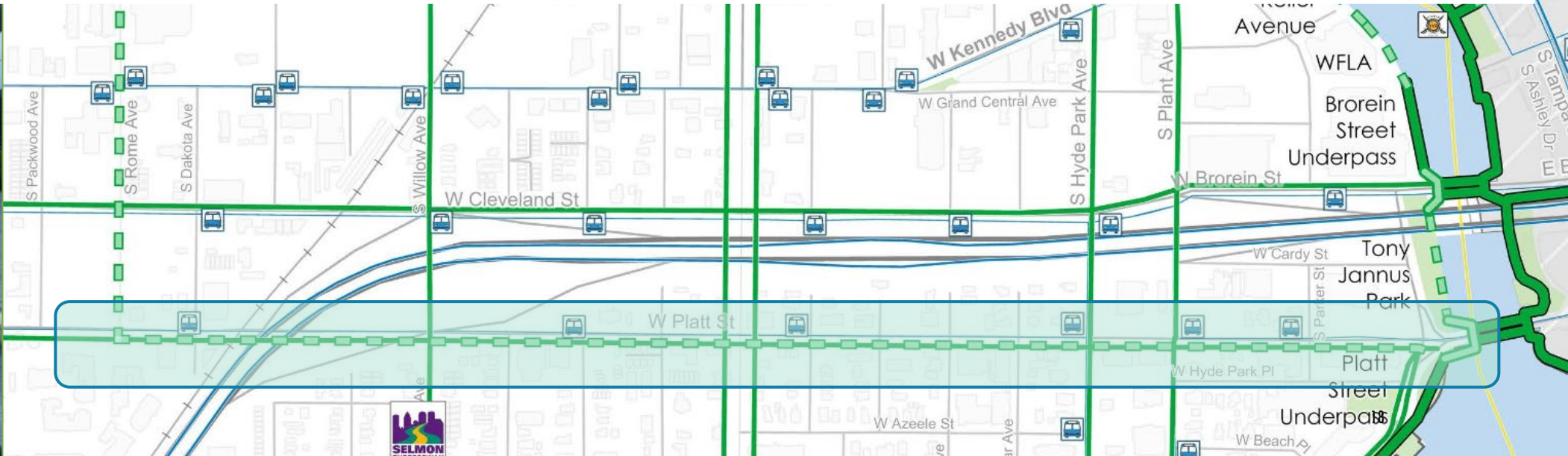
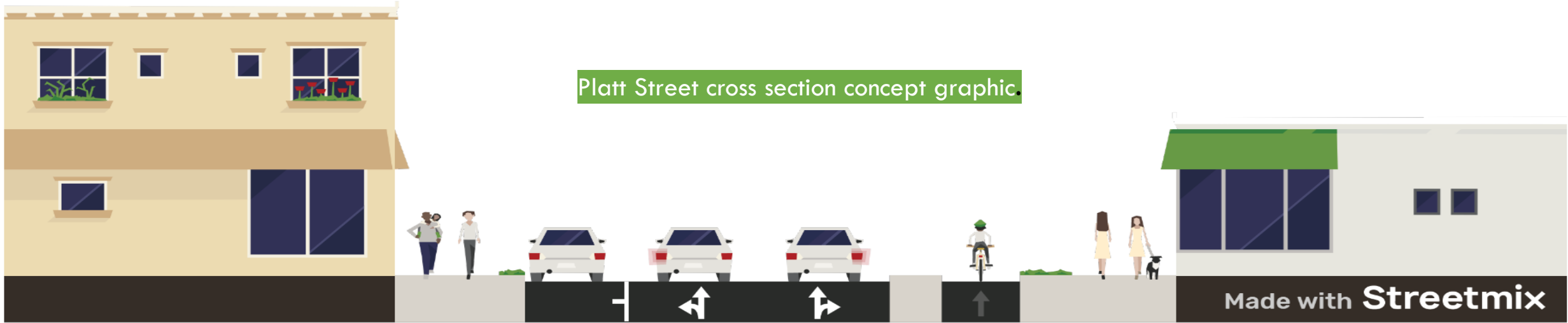
amenity spaces

- a. activity greenspace
- b. pocket park
- c. resident amenity pool deck
- d. picnic and BBQ area
- e. surface parking
- f. fitness walking path w/distance markers
- g. pocket park / sculpture garden
- h. dog park
- i. great lawn
- j. brick paved streetscape
- k. new West Tampa Cultural Center & Art Museum
- l. new Workforce Training Center
- m. existing MLK Center
- n. bicycle and scooter parking
- o. kids splash pad area
- p. outdoor performance area
- q. tower

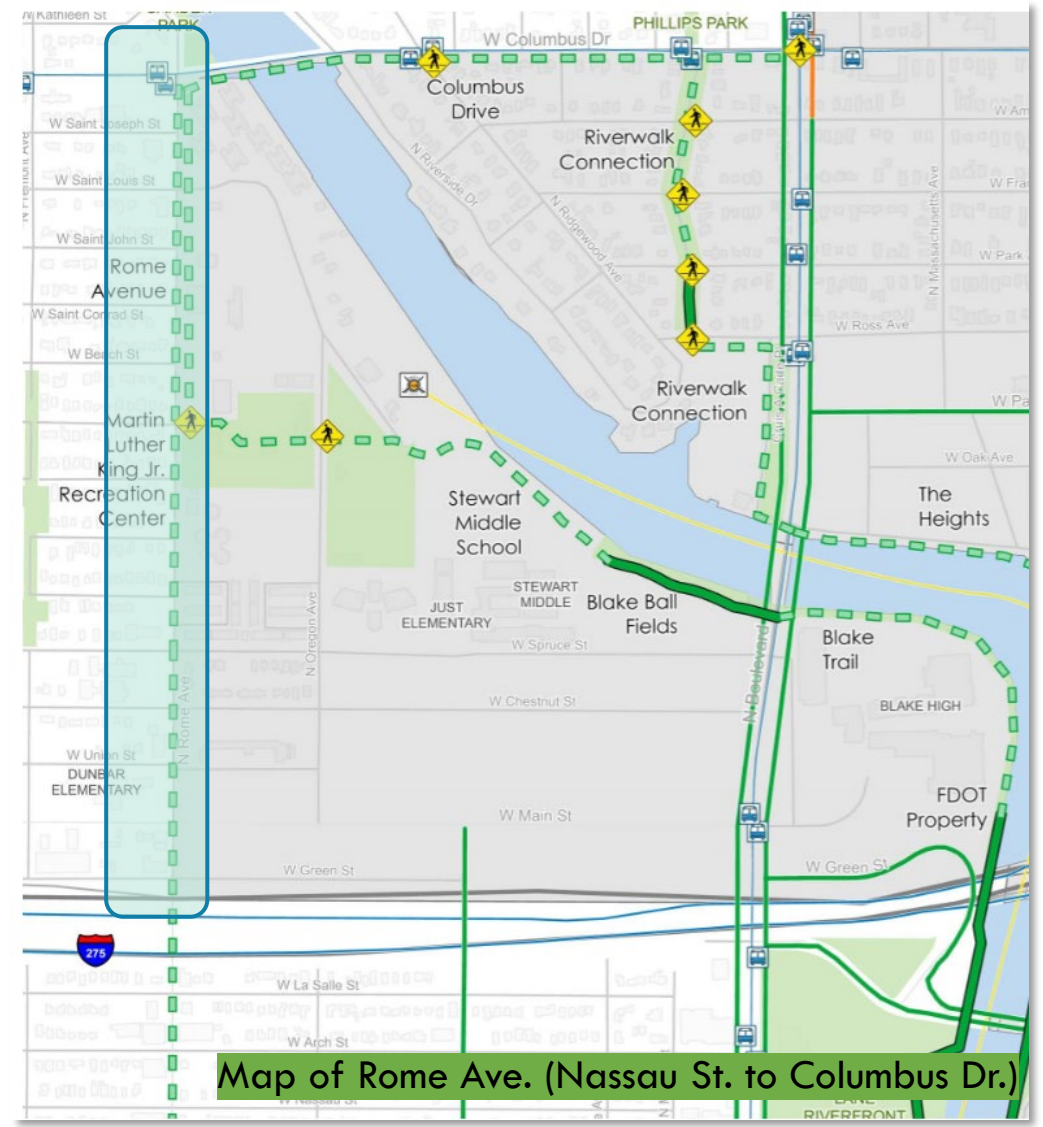
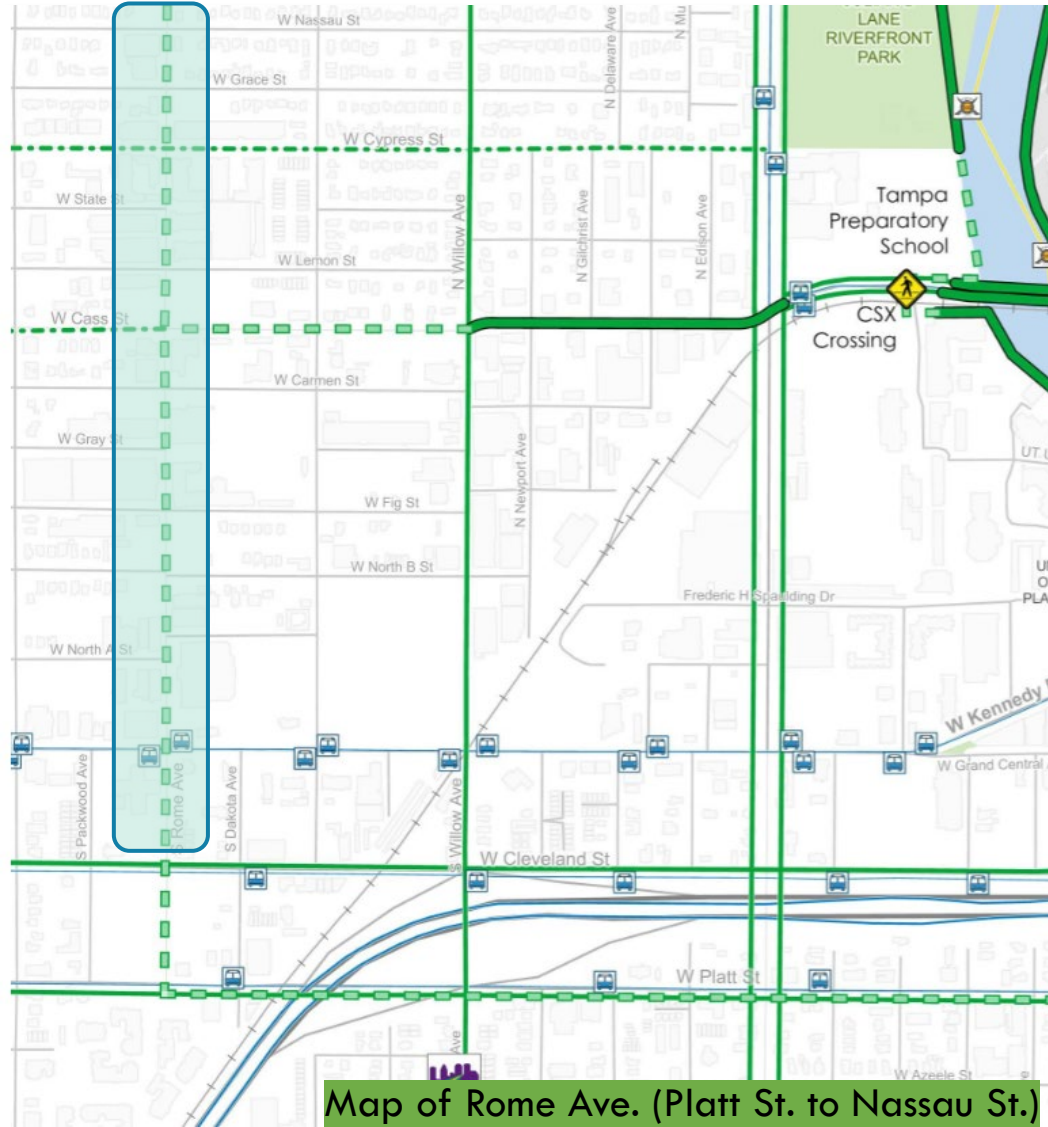
Conceptual layout of the Rome Yard project



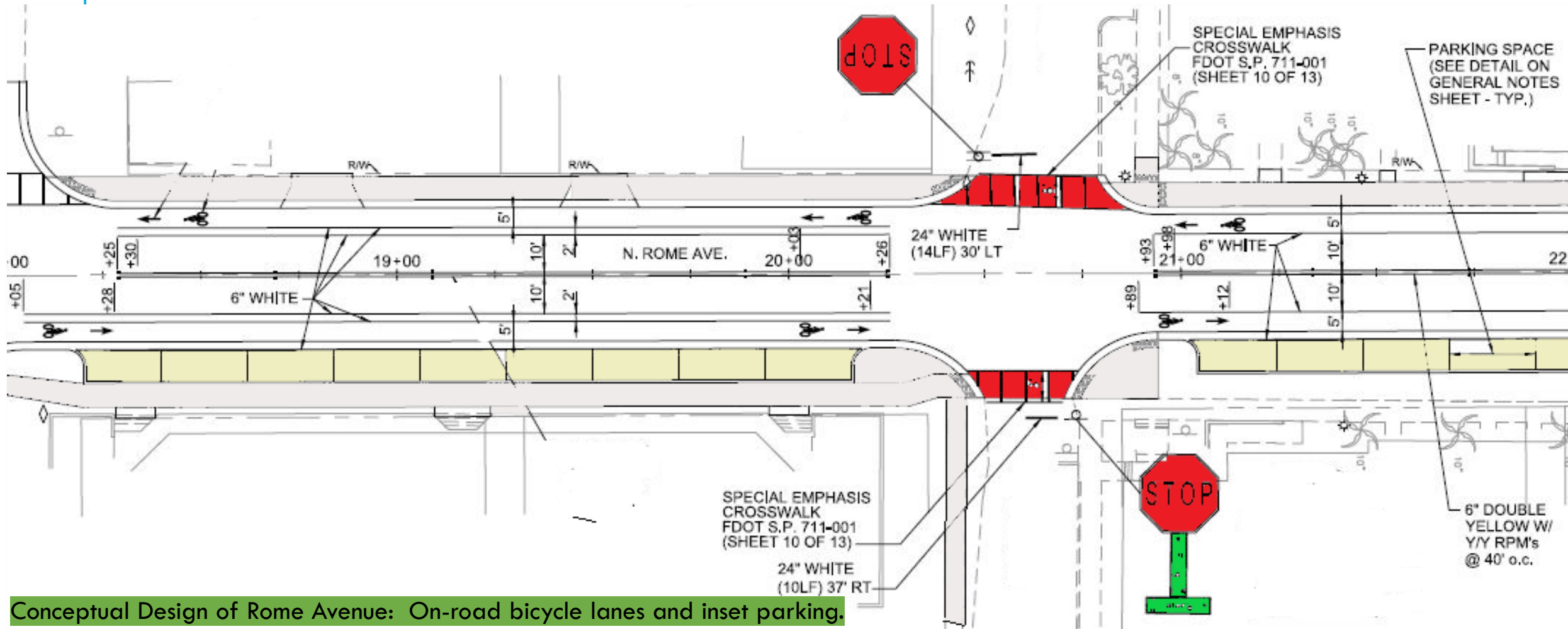
SEGMENT 3: PLATT ST. (ROME AVE TO BAYSHORE BLVD)



SEGMENT 4: ROME AVE (PLATT ST. TO COLUMBUS DR)

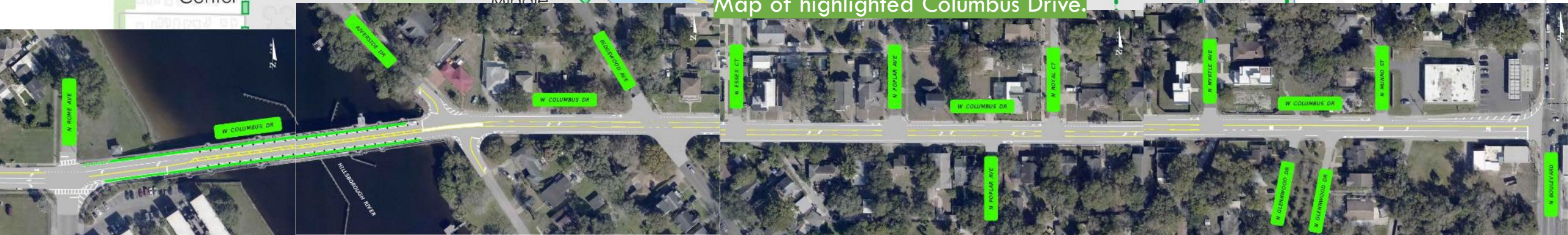
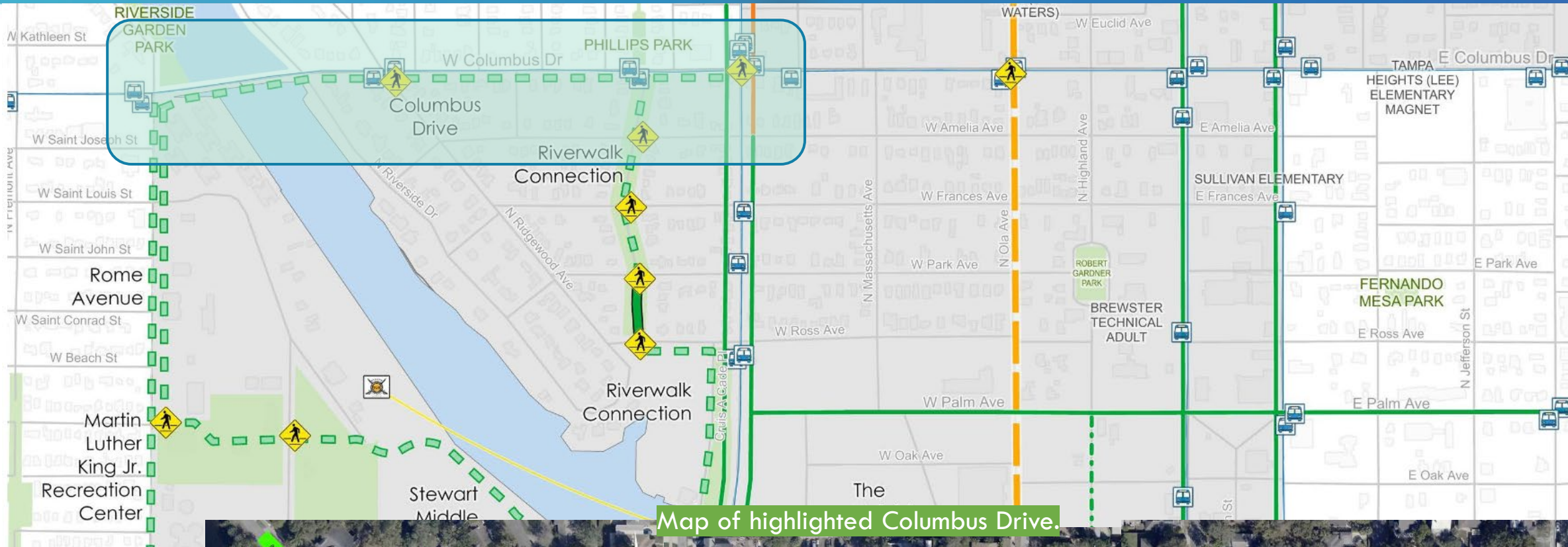


SEGMENT 4: ROME AVE (PLATT ST. TO COLUMBUS DR)

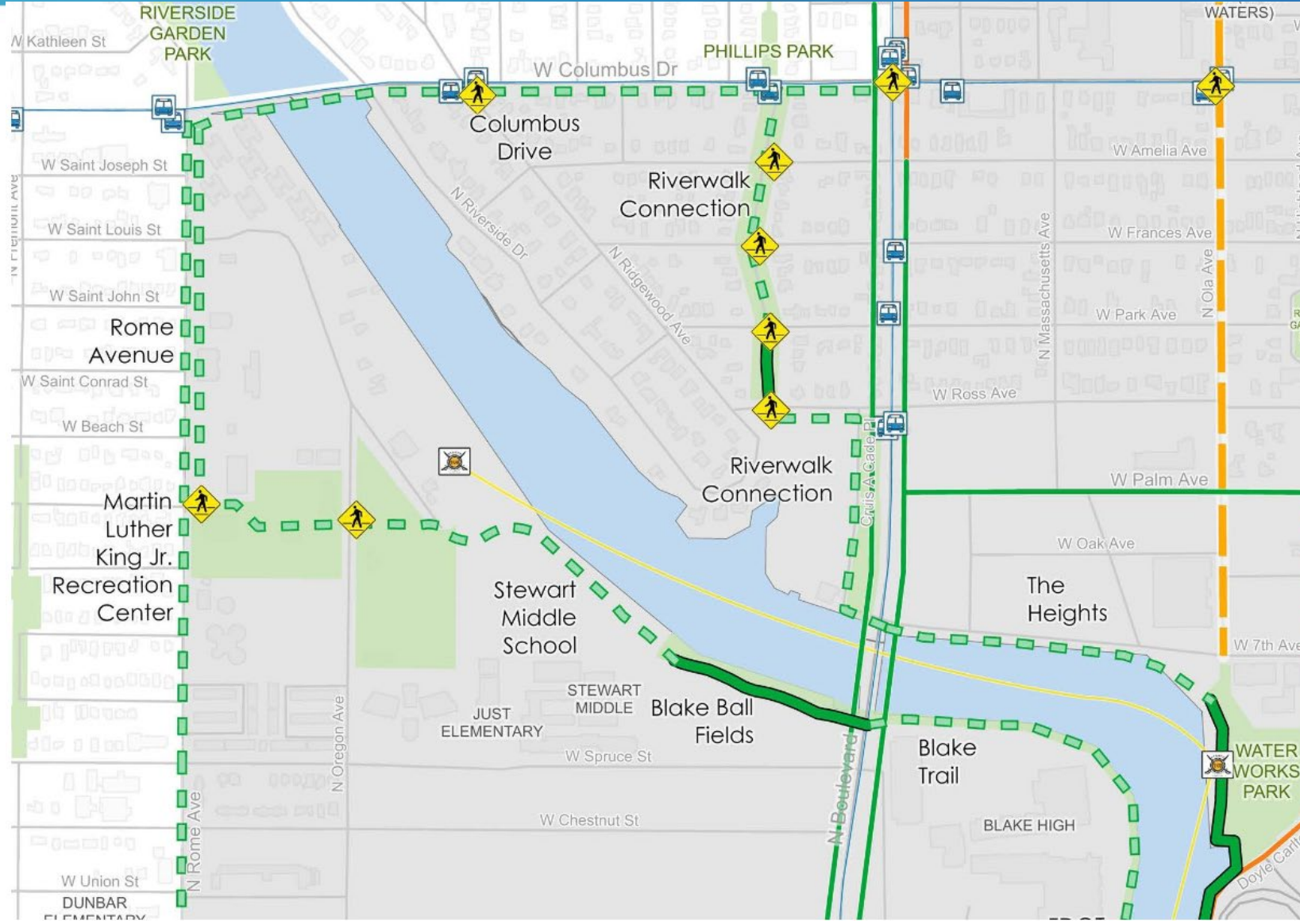


Conceptual Design of Rome Avenue: On-road bicycle lanes and inset parking.

SEGMENT 5: COLUMBUS DRIVE (ROME AVENUE TO N. BOULEVARD)



SEGMENT 6: RIDGEWOOD PARK (N. BOULEVARD TO COLUMBUS DR.)



NEXT PROCUREMENT STEPS



- **Current Procurement Schedule / deadlines contained in RFQ**
Subject to change, Offerer's to be notified
- **Friday, March 10, 2023 - Deadline for submittal of written RFQ Questions**
- **Monday, March 20, 2023, 2:00 PM - Deadline for RFQ electronic Statement of Qualifications (SOQs)**
- **Tuesday, April 11, 2023 - Expected Shortlist Posting of top 3 D-B Firms. Proceed to RFP Stage.**
- **May 3, 2023 - Preliminary List of Alternative Technical Concepts (ATC) Proposals**
- **Design-Build Team Notice to Proceed (expected Fall 2023, roughly November)**
- **Substantial Completion (end of 2026)**

STAY INFORMED



The City's sole point of contact (POC) for RFQ:

ContractAdministration@tampagov.net

Jim.Greiner@tampagov.net

Jim Greiner, 813-274-8598

Project Website:

www.tampa.gov/westriverBUILD

WEST RIVER DISTRICT BUILD GRANT PROJECT

Questions ?

22-C-00001 Build Project Pre-Submission Meeting Transcript

0:2:8.420 --> 0:2:9.450

Jim Greiner

OK, here we go.

0:2:10.730 --> 0:2:13.40

Jim Greiner

Having reached the appointed hour.

0:2:14.250 --> 0:2:22.820

Jim Greiner

We'll go ahead and begin this presubmission meeting for contract 22C1, the build project.

0:2:23.740 --> 0:2:24.130

Jim Greiner

Uh.

0:2:25.90 --> 0:2:28.60

Jim Greiner

OK, keep your microphones muted.

0:2:28.920 --> 0:2:32.350

Jim Greiner

And use the phrase hand.

0:2:36.640 --> 0:2:38.170

Jim Greiner

What's going on?

0:2:41.820 --> 0:2:43.150

Jim Greiner

Get to the.

0:2:44.650 --> 0:2:47.240

Jim Greiner

Other stuff here, OK.

0:2:48.440 --> 0:2:48.830

Jim Greiner

So.

0:2:52.410 --> 0:2:54.530

Jim Greiner

So keep your microphones muted.

0:3:46.370 --> 0:3:48.430

Nina Mabileau

Jim Greiner, I can't hear you on my end.

0:3:51.520 --> 0:3:54.870

Jim Greiner

Yeah, you can't keep it. Don't hit the mute. Everybody but.

0:3:55.850 --> 0:3:57.100

Nina Mabileau

OK, sorry.

0:3:56.540 --> 0:3:58.950

Jim Greiner

No. Yeah, I didn't. One at a time.

0:4:0.140 --> 0:4:0.850

Jim Greiner

So did you.

0:4:1.480 --> 0:4:12.770

Jim Greiner

Uh, to recap, we're gonna keep the mic's muted and you use the raise your hand symbol to be recognized, to speak, and if you are a.

0:4:13.470 --> 0:4:24.100

Jim Greiner

Firm the one person per firm can sign in in the chat mode, but the name of your firm and your e-mail address and so forth.

0:4:26.120 --> 0:4:36.830

Jim Greiner

If you are a firm looking to be a prime or a subcontractor on this contract, indicate what it is you do and your e-mail address and.

0:4:39.190 --> 0:4:41.100

Jim Greiner

Jump in on the the chat thing.

0:4:43.380 --> 0:4:52.710

Jim Greiner

And so again, we are in the cone of silence, and apparently I was in the cone of silence with those commuted Mike accidentally there, so.

0:4:53.810 --> 0:4:54.520

Jim Greiner

You can.

0:4:55.340 --> 0:4:59.550

Jim Greiner

During this meeting is the time for you to ask your questions and so forth.

0:5:1.470 --> 0:5:21.180

Jim Greiner

And the engineering staff and everybody can answer freely at this meeting during the meeting, but after the meeting, then it's back to Cone of silence, where all the questions go to contractadministration@tampagov.net. Or you can talk to me. And that's it. During the cone of silence.

0:5:22.60 --> 0:5:22.340

Nina Mabileau

Sorry.

0:5:22.400 --> 0:5:22.630

Jim Greiner

And.

0:5:27.550 --> 0:5:40.520

Jim Greiner

So there there's a schedule in the RFQ that we'll just see how closely we can follow that, but it would be subject to possible revisions and so forth. Keep an eye out for that.

0:5:41.920 --> 0:5:45.830

Jim Greiner

The statements of qualification I'll first come in.

0:5:46.550 --> 0:5:49.460

Jim Greiner

We're looking for qualifications during that process.

0:5:50.180 --> 0:6:0.660

Jim Greiner

And the criteria and the score and stuff is all in the RFQ, the the plan is to then shortlist 3 firms.

0:6:1.440 --> 0:6:7.510

Jim Greiner

To subsequently uh respond to the RFP and give a.

0:6:8.790 --> 0:6:9.660

Jim Greiner

Hard price.

0:6:10.420 --> 0:6:21.710

Jim Greiner

And a technical response that would be scored in the selected firm would be the one whose price divided by the technical score is the lowest.

0:6:22.710 --> 0:6:30.680

Jim Greiner

We'll have questions and answers at the end of the presentation. Introductory presentation from our.

0:6:31.860 --> 0:6:34.570

Jim Greiner

Mobility people and then.

0:6:35.610 --> 0:6:36.110

Jim Greiner

Uh.

0:6:37.410 --> 0:6:49.370

Jim Greiner

We're we're looking for questions from potential design build firms at that point. And after those questions are finished and other general questions that can be entertained.

0:6:50.870 --> 0:6:57.900

Jim Greiner

OK, at this time we'll go ahead and turn the proceedings over to Nina Mabololo.

0:7:1.680 --> 0:7:3.680

Nina Mabileau

Hello let me.

0:7:4.370 --> 0:7:7.440

Nina Mabileau

Share my screen if possible.

0:7:12.770 --> 0:7:13.350

Nina Mabileau

OK.

0:7:16.820 --> 0:7:17.550

Nina Mabileau

One second.

0:7:35.50 --> 0:7:36.360

Nina Mabileau

You've heard the correct screen.

0:8:9.740 --> 0:8:10.250

Nina Mabileau

Oops.

0:8:14.20 --> 0:8:14.770

Nina Mabileau

Turn these notes.

0:8:28.590 --> 0:8:31.510

Nina Mabileau

OK. Do you see one full screen, the welcome screen?

0:8:33.450 --> 0:8:34.680

Lara Bouck

You know, we have the other screen.

0:8:33.510 --> 0:8:35.40

Danni Jorgenson

We also see the meeting notes.

0:8:36.460 --> 0:8:36.780

Nina Mabileau

Right.

0:8:50.740 --> 0:8:51.340

Nina Mabileau

How about now?

0:8:52.400 --> 0:8:53.30

Jim Greiner

That's better.

0:8:53.300 --> 0:8:53.800

Lara Bouck

There it is.

0:8:53.540 --> 0:8:58.610

Nina Mabileau

OK. Welcome everyone. I'm Nina mabilo. I am the.

0:8:59.450 --> 0:9:14.180

Nina Mabileau

Tampa Multimodal network and safety Improvements project manager in the City of Tampa Mobility Department. We also refer to the project as the West River District and the Build grant project, and this is our PRESUBMISSION meeting.

0:9:15.350 --> 0:9:16.570

Nina Mabileau

Per the RFQ.

0:9:20.330 --> 0:9:30.330

Nina Mabileau

Umm, what you see now is the graphic of the entire project on the left. We've broken it into six segments which are more for independent utility.

0:9:31.60 --> 0:9:38.390

Nina Mabileau

Uh, it can be broken down further, or however the design build firm sees fit.

0:9:41.0 --> 0:9:50.170

Nina Mabileau

Three of these segments, 3-4 and five, are complete St segments and then segments 212 and six are along.

0:9:50.990 --> 0:9:51.730

Nina Mabileau

The river.

0:9:54.140 --> 0:10:3.870

Nina Mabileau

And segment one has the two pedestrian underpass bridges and on the right you just have a picture basically looking southward from the Columbus Dr Bridge.

0:10:6.480 --> 0:10:19.790

Nina Mabileau

And I'll I'll I'll go more into the the six segments in a minute here. I wanted to bring up some important points. Elements from the RFQ itself. We do have pre FDOT pre qualifications.

0:10:21.500 --> 0:10:23.830

Nina Mabileau

Four of them there for design.

0:10:24.880 --> 0:10:32.520

Nina Mabileau

Minor roadway design, minor bridge design, signing, pavement marking and channelization and design right of way and construction surveying.

0:10:33.170 --> 0:10:45.920

Nina Mabileau

Now either the prime can have that or one of his subconscious Subs, as long as they are the responsible party doing the work, and for construction. The only prequel is for the minor bridges.

0:10:48.430 --> 0:11:1.320

Nina Mabileau

Of this project, as far as equal business opportunity goes and diversity, equity and inclusion has only an aspirational goal of 15% at a minimum, but of course.

0:11:1.660 --> 0:11:7.760

Nina Mabileau

Umm. As much as you can maximize that the better it's going to apply to the whole project.

0:11:8.920 --> 0:11:10.550

Nina Mabileau

Both design and construction.

0:11:11.590 --> 0:11:19.790

Nina Mabileau

And are equal Opportunity Office will be monitoring that as the project progresses to completion.

0:11:20.750 --> 0:11:32.360

Nina Mabileau

Umm pretty much for tracking and they can also help you with identifying firms that we have on the cities list and any other firms that are listed.

0:11:33.430 --> 0:11:38.190

Nina Mabileau

Both with the state and nationally, as this is a federal project.

0:11:39.390 --> 0:11:56.940

Nina Mabileau

The city does have a workforce development and apprenticeship program that will have to be adhered to and that is on the city's website as well. And I think we made a reference to its Lync web link in the.

0:11:58.190 --> 0:11:58.740

Nina Mabileau

RFP.

0:11:59.840 --> 0:12:7.990

Nina Mabileau

And of course, your team composition and structure is very important for the project. So we'll be looking at that as we evaluate your souqs.

0:12:9.610 --> 0:12:12.10

Nina Mabileau

This is a breakdown on the scoring of the RFQ.

0:12:13.810 --> 0:12:16.300

Nina Mabileau

40% is gonna be based on your.

0:12:17.540 --> 0:12:25.480

Nina Mabileau

Experience of your team on complete streets, urban trail, and coastal projects since that is the heart of this.

0:12:26.680 --> 0:12:28.880

Nina Mabileau

Uh Federal build project.

0:12:29.840 --> 0:12:32.230

Nina Mabileau

20% based on your teams.

0:12:33.230 --> 0:12:37.620

Nina Mabileau

Experience on design build projects, which this is as well.

0:12:38.370 --> 0:12:56.470

Nina Mabileau

And then 10% each for your key personnel and their experience, historical evidence of your EBO outreach and conclusion inclusion, which is going to be during the RFQ period. And then there'll be an additional step during the RFP period. But this is just for the Soq right now.

0:12:57.670 --> 0:13:0.610

Nina Mabileau

Your understanding of the project risks and.

0:13:1.310 --> 0:13:3.380

Nina Mabileau

Oh, do I have this twice? Something is wrong here.

0:13:4.480 --> 0:13:6.380

Nina Mabileau

678910.

0:13:8.600 --> 0:13:11.960

Nina Mabileau

That's I have this repeated which is not correct.

0:13:12.790 --> 0:13:16.840

Nina Mabileau

And let me correct that last field if I can.

0:13:19.520 --> 0:13:22.230

Nina Mabileau

I don't have that in front of me, Jim. Yes, I do.

0:13:25.370 --> 0:13:31.760

Nina Mabileau

Off uh, your workload and availability is the 10th 1:00, so I can't correct this at the moment. Sorry about that.

0:13:33.160 --> 0:13:39.490

Nina Mabileau

Umm, some elements for the RFP that I wanted to bring up, although primarily we're talking RFQ at this point.

0:13:41.210 --> 0:13:54.870

Nina Mabileau

In the technical proposals, we're looking for something like a 30% design and the city only uses native AutoCAD. We don't want conversions from Microstation to AutoCAD because that introduces problems.

0:13:55.490 --> 0:13:56.280

Nina Mabileau
And.

0:13:58.110 --> 0:14:2.870

Nina Mabileau
I believe in one of the attachments we included the cities standard sheets.

0:14:3.990 --> 0:14:4.760

Nina Mabileau
Which are.

0:14:5.470 --> 0:14:32.30

Nina Mabileau
In the advertisement you have both the RFQ, the RFP attachments for both documents folders with all the attachments, and then there's one of reference documents for the RFP as well. Another important element is the public involvement, which it will be continuing through the life of the project. We're gonna want the design build team to have a public involvement coordinator and as well as develop and maintain a public project website.

0:14:33.190 --> 0:14:37.700

Nina Mabileau
Public facing information about detours, et cetera. And then of course.

0:14:39.510 --> 0:14:40.680

Nina Mabileau
We hope to get many.

0:14:42.640 --> 0:14:53.280

Nina Mabileau
Submitters on the RFQ and then we're going to review them, score them the top three firms will move on into the RFP stage, which is going to occur.

0:14:54.680 --> 0:14:59.420

Nina Mabileau
We should shortlist around April 11th. We do have a schedule in the RFQ.

0:15:0.140 --> 0:15:3.400

Nina Mabileau
Uh, which we're going to try to adhere to as much as possible.

0:15:5.60 --> 0:15:13.510

Nina Mabileau
And then the two unsuccessful RFP offers will each get a stipend of \$150,000 for your trouble.

0:15:15.620 --> 0:15:29.190

Nina Mabileau
Have these again are the six segments of the project segment 1 includes the two underpasses under the

Platt Street Bridge and the Boring Street Bridge, and they're connected on the land West side of the river, and Tony Janice Park.

0:15:30.180 --> 0:15:32.410

Nina Mabileau

This is probably the most challenging.

0:15:33.320 --> 0:15:50.230

Nina Mabileau

Segment of the Project segment 2 and you'll see there's a gap here, which I'll go back and explain in a second. But segment 2 starts north of the Kennedy Blvd. Bridge at the plant park at the University of Tampa, runs along the West side of the river making a.

0:15:51.830 --> 0:16:1.400

Nina Mabileau

On road crossing but on Cash St between University of Tampa and Tampa. Tampa Prep and then again along the West side of the river wrapping around.

0:16:2.630 --> 0:16:12.760

Nina Mabileau

Blake High School, Stuart Middle School and at the North End of Stuart Middle School goes to the West through the Rome Yard development.

0:16:13.40 --> 0:16:25.980

Nina Mabileau

Uh, the cities Martin Luther King Junior Park and then back out to Rome Ave and then segment 3 is Flat Street from Rome to the river, a complete St segment.

0:16:27.700 --> 0:16:37.980

Nina Mabileau

Rome Ave segment 4 is from plate to Columbus and then segment 5 is the Columbus Drive from Rome Ave to North Blvd.

0:16:39.740 --> 0:16:50.310

Nina Mabileau

Uh Segment 6 is from Columbus, down through the Ridgewood Park neighborhood, connecting underneath the North Blvd. Bridge to the existing river walk on the east side of the river.

0:16:53.970 --> 0:16:56.480

Nina Mabileau

So segment one is the two underpasses.

0:16:58.380 --> 0:17:6.890

Nina Mabileau

At flat and boring St and the Green Street Bridge is paralleled by the elevated Celman Expressway and.

0:17:7.800 --> 0:17:24.870

Nina Mabileau

The Tampa Hillsborough Expressway Authority is also planning on, I don't know, their schedule, current

schedule, but they're planning on widening this elevated facility 10 feet to the South, 10 feet to the north. And they're also going to be putting additional supports both on the land and in the water.

0:17:25.650 --> 0:17:35.200

Nina Mabileau

So we're gonna have to thread our facility West of these offenders between the seawall and the supports for the Selmon Expressway.

0:17:38.80 --> 0:17:40.550

Nina Mabileau

Umm this is.

0:17:41.770 --> 0:18:2.440

Nina Mabileau

Shows currently the South side of the bridge where the Bayshore Blvd. Trail comes up to the South side to go underneath the Platte Street Bridge. This is currently closed off as you can see, it's not very tall and it's dark, so it's going to be bypassed by the new underpass that will come South and connect to the Columbus Statue Park at the North End of Bayshore Blvd.

0:18:3.320 --> 0:18:8.120

Nina Mabileau

This is a picture of the Boring Street bridge at the North End of Tony Janice Park.

0:18:8.990 --> 0:18:15.160

Nina Mabileau

And this is on the left. Here is bottom left is Tony Janice Park at the river.

0:18:16.620 --> 0:18:18.510

Nina Mabileau

What's existing this railing?

0:18:19.790 --> 0:18:20.300

Nina Mabileau

Is not.

0:18:21.110 --> 0:18:28.40

Nina Mabileau

Tall enough so if the facility is near the river of the railing may have to be supplemented or replaced.

0:18:29.620 --> 0:18:34.500

Nina Mabileau

And in the bottom right corner is the manner river walk existing section of the.

0:18:35.180 --> 0:18:43.760

Nina Mabileau

Uh West River District trail. And that's where the underpass that comes under the Boring Street Bridge will connect to this trail.

0:18:44.850 --> 0:19:0.210

Nina Mabileau

There's also a floating dock there, but I think there's 150 feet or so South of that where the underpass can connect. These are early concept plans that the city did for both the underpass at Platt St and the one at Boreen.

0:19:1.720 --> 0:19:8.650

Nina Mabileau

The boring St underpass and particular does not need to be this lengthy. We do have an easement from.

0:19:9.770 --> 0:19:10.650

Nina Mabileau

The hillsberg.

0:19:11.360 --> 0:19:25.930

Nina Mabileau

Expressway authority to connect anywhere South of the Boring Bridge so this segment could likely be shorter and the reason they're shown curvilinear like this. And under these particular spans is for vertical clearance.

0:19:27.320 --> 0:19:39.320

Nina Mabileau

Uh, and we, we we want them to be smoother than the. If you're familiar with the east side of the river walk, it has more sharp angles. But if you're a bicyclist, that's a little hard to.

0:19:40.410 --> 0:19:48.620

Nina Mabileau

To take those corners, sometimes the minimum width on these, if you've looked at the design criteria, is 15 feet between railings.

0:19:49.400 --> 0:19:55.740

Nina Mabileau

And we'd like them to look similar to the underpass that's currently at the Kennedy Blvd. Bridge.

0:19:57.650 --> 0:20:1.630

Nina Mabileau

Ohh, I was going to talk about the gap between let me jump back for a second.

0:20:3.800 --> 0:20:6.810

Nina Mabileau

The gap between segment one and two, there are two private.

0:20:7.660 --> 0:20:12.290

Nina Mabileau

Uh parcels here. One is the Tribune WFL, a site and the other is the.

0:20:12.940 --> 0:20:17.420

Nina Mabileau

Was formerly known as Lafayette Tower, but now it's related groups River Walk I believe.

0:20:19.940 --> 0:20:32.710

Nina Mabileau

And the Riverwalk parcel has a bonus provision that they're gonna be building their of frontage segment of the Riverwalk and the Under press under Kennedy Blvd. Bridge.

0:20:34.210 --> 0:20:44.910

Nina Mabileau

So we can minimize any gaps in our system, but that's not included in this project. And then WLAN also has a old zoning requirement on their property.

0:20:45.550 --> 0:20:48.100

Nina Mabileau

To close that Gap, segment 2.

0:20:48.950 --> 0:20:50.210

Nina Mabileau

As I mentioned.

0:20:52.170 --> 0:20:55.380

Nina Mabileau

Starts north of the Kennedy Blvd. Bridge.

0:20:56.220 --> 0:20:57.150

Nina Mabileau

At Plant park.

0:20:57.820 --> 0:21:8.280

Nina Mabileau

Umm, there's a brick Plaza, if you will, on the north side of the Kennedy Blvd. Bridge and that's where the trail will start and go through plant Park and northward.

0:21:8.950 --> 0:21:27.360

Nina Mabileau

And you see some references. Here we have all these documents which are included in the reference files and the city surveyor, although he did include what he had surveyed to date, he is working also on finalization of a right away map, which we hope to get in April to the top three firms.

0:21:28.500 --> 0:21:30.870

Nina Mabileau

To lay out their 30% plans.

0:21:32.120 --> 0:21:36.970

Nina Mabileau

Umm once it leaves the back leaves the University of Tampa at Cash St.

0:21:37.590 --> 0:22:8.340

Nina Mabileau

There is a CSX right of way north of University of Tampa and South of the Cash Street Road right of way, but you should not be concerned with that. We're not going to be entering that. I understand that the

University of Tampa is making modifications to their private drive there. I believe it's called University Drive and they're working with CSX. But our trail will stop on CSX property and then pick up again in the Cache Street right away as it goes N back to the river by Tampa Prep school.

0:22:8.930 --> 0:22:13.980

Nina Mabileau

And Tampa Prep also maybe. Yeah, it's this next slide. Uh they have.

0:22:14.790 --> 0:22:18.960

Nina Mabileau

Uh, probably about 300 feet of sea wall. That's in very poor condition.

0:22:19.950 --> 0:22:44.700

Nina Mabileau

And this is one of the areas where we are interested in having living shorelines installed. The minimum in the RFP is 1500 linear feet, and of course the permitting agencies would like to see that in increments of 500 or less for permitting ease of permitting. So whether that seawall gets broken down or just supplemented.

0:22:46.20 --> 0:22:49.440

Nina Mabileau

We've included as a reference document some plans that were done.

0:22:51.0 --> 0:22:53.100

Nina Mabileau

In the past that were never.

0:22:54.700 --> 0:23:1.210

Nina Mabileau

Issued or anything, but you can use those as a reference document, but I wanted to bring that to your attention.

0:23:2.850 --> 0:23:10.300

Nina Mabileau

And the the city of Tampa Parks Department is going to be fencing off Tampa Prep, which is a K through 12 school.

0:23:11.130 --> 0:23:14.130

Nina Mabileau

Uh, prior to construction in that area.

0:23:15.410 --> 0:23:19.160

Nina Mabileau

To separate the students from the public facility.

0:23:21.20 --> 0:23:30.90

Nina Mabileau

Julian B Lane already exists, but at the North End of Tampa Prep there'll be a connection there and I don't know if I mentioned it or you can see it.

0:23:30.830 --> 0:23:38.220

Nina Mabileau

Uh at the North End of Tampa Prep, there's a retention pond with a berm that separates it from the river and the sea wall.

0:23:38.980 --> 0:23:41.40

Nina Mabileau

Uh, the trail would go in that area.

0:23:42.490 --> 0:23:44.280

Nina Mabileau

Julian B Lane already exists.

0:23:44.960 --> 0:23:54.140

Nina Mabileau

Umm, up under the Interstate? But we're also asking for some improvements to be made under the Interstate and some sidewalk connections.

0:23:56.530 --> 0:24:3.540

Nina Mabileau

And then the existing trail that wraps around Blake high schools in pretty poor shape. So it's to be removed and replaced.

0:24:4.730 --> 0:24:8.960

Nina Mabileau

This is deeded property. The city owns around Blake High School and Stuart Middle School.

0:24:11.150 --> 0:24:14.660

Nina Mabileau

And there's also maybe one small gap in the fence that I believe.

0:24:16.210 --> 0:24:19.250

Nina Mabileau

This is either the school board or the city will close.

0:24:20.30 --> 0:24:23.100

Nina Mabileau

By the time you know we're ready for construction.

0:24:23.760 --> 0:24:35.490

Nina Mabileau

There's a piece of existing at Stewart, which is if it's in good shape, it can remain, but it is to be widened. The minimum trail with north of Kennedy Blvd is 12 foot wide.

0:24:36.560 --> 0:24:41.250

Nina Mabileau

And South of Kennedy Blvd, it's 15 feet wide, which includes those underpasses.

0:24:44.310 --> 0:24:48.450

Nina Mabileau

This segment between Stewart Middle School and Rome Ave.

0:24:50.470 --> 0:24:52.800

Nina Mabileau

The Stewart Middle School segment is.

0:24:53.780 --> 0:25:0.590

Nina Mabileau

Included in this project, the piece that goes across this part of the Rome Yard will be built by their developer.

0:25:1.660 --> 0:25:5.180

Nina Mabileau

So you'll have a connection here on the east side and then?

0:25:6.50 --> 0:25:7.740

Nina Mabileau

A connection to their facility.

0:25:8.410 --> 0:25:13.460

Nina Mabileau

On this is Oregon. I believe this is Willow on the right, Oregon on the left.

0:25:14.180 --> 0:25:26.250

Nina Mabileau

We we do want this project to build the piece through the cities, Martin Luther King Junior Recreation Center parcel and then the vertical piece on.

0:25:27.290 --> 0:25:34.650

Nina Mabileau

The east right away or near the east right of way, is also gonna be done by the Romard developer, at least up to Saint Louis St.

0:25:35.320 --> 0:25:36.930

Nina Mabileau

And they'll be some.

0:25:38.150 --> 0:25:46.650

Nina Mabileau

Special emphasis crosswalks. Uh across Oregon. Across Willow. Here the the Rome Yard developer will build this one.

0:25:48.170 --> 0:25:52.0

Nina Mabileau

And then on Rome Ave, there are multiple.

0:25:53.460 --> 0:25:55.740

Nina Mabileau
Pedestrian activated.

0:25:57.140 --> 0:26:3.130

Nina Mabileau
Midblock crossings, if you will, because they're not signalized and there's one here at Palmetto to the West.

0:26:5.340 --> 0:26:11.130

Nina Mabileau
This is the uh, early concept of the room yard. You can see the track here for Stuart Middle School.

0:26:11.850 --> 0:26:20.920

Nina Mabileau
So our DB team will build this, the developer will pick up here at his extension to Willow Ave, go across his parcel and then.

0:26:22.580 --> 0:26:39.670

Nina Mabileau
Our debt, Megan will pick up at Oregon, go through the MLK Rec Center site and connect to the Rome. I mean, yeah, the Rome Yards Trail going north toward Columbus. You can see here that at the top of the screen that Saint Louis, it doesn't go all the way to Columbus Drive.

0:26:41.50 --> 0:26:43.950

Nina Mabileau
That's another shot from the other side of the river.

0:26:46.630 --> 0:26:49.320

Nina Mabileau
The developed the ROMARD developer will build this and this.

0:26:51.900 --> 0:26:54.130

Nina Mabileau
This is a conceptual.

0:26:54.860 --> 0:27:13.650

Nina Mabileau
Plan for the cross section for Platt St We want the you know, it's one way eastbound. We want the cycle track to be separated by an elevated divider as much as possible. It will have to be painted in some areas due to intersections, driveways, et cetera.

0:27:14.680 --> 0:27:19.650

Nina Mabileau
There is a rail line that crosses Platt Street, just West of the.

0:27:21.300 --> 0:27:33.950

Nina Mabileau

The Crosstown Expressway and there's an existing traffic signal there. CSX has expressed some desire to have it replaced, but it is functioning and the city wants to retain it.

0:27:35.150 --> 0:27:43.810

Nina Mabileau

Uh, we're not widening the roadway there. In fact, we're narrowing it a little bit, but we're adding a pedestrian walk on the South side. I believe the north side is already existing.

0:27:44.640 --> 0:27:55.60

Nina Mabileau

But the crossings and protections for vehicles will have to be extended for the pedestrians as well, because of course the pedestrians can move east and westbound.

0:27:56.970 --> 0:28:6.730

Nina Mabileau

Rome Ave just because it's so long is split into two sections here from flat to Nassau and then Nassau to Columbus.

0:28:9.390 --> 0:28:10.540

Nina Mabileau

Here is a.

0:28:11.930 --> 0:28:13.860

Nina Mabileau

Typical section, if you will or.

0:28:15.500 --> 0:28:18.970

Nina Mabileau

Typical concept for Rome Ave that actually exists in.

0:28:19.600 --> 0:28:32.260

Nina Mabileau

He says particularly near Cass St, where developers have already improved it. Uh. You can see on road parking on road bicycle lanes that are buffered by Stripe Edge.

0:28:33.530 --> 0:28:35.60

Nina Mabileau

Perhaps at the North End?

0:28:36.10 --> 0:28:40.320

Nina Mabileau

You may have to go to share the road markings if there's not enough width.

0:28:41.300 --> 0:28:52.170

Nina Mabileau

Uh, special emphasis crosswalks North and South. And then, as I mentioned, there are numerous recommended locations for East and West across Rome Ave as well.

0:28:53.160 --> 0:29:5.880

Nina Mabileau

Columbus Drive is actually a county roadway and the county does have plans that have been finalized, and they're included as a reference document for their resurfacing of Columbus Drive.

0:29:6.880 --> 0:29:8.140

Nina Mabileau

Which?

0:29:8.860 --> 0:29:12.250

Nina Mabileau

I believe it goes at least to North Blvd, if not beyond it.

0:29:13.260 --> 0:29:17.390

Nina Mabileau

So our main improvements with this project are going to be the bridge area.

0:29:18.50 --> 0:29:22.180

Nina Mabileau

Umm, we're recommending a separated.

0:29:23.190 --> 0:29:28.20

Nina Mabileau

Multimodal facility on the South side of the bridge for both bicyclists and pedestrians.

0:29:29.360 --> 0:29:32.620

Nina Mabileau

They'll probably use it in both directions and.

0:29:33.890 --> 0:29:41.480

Nina Mabileau

Pushing the travel lanes to the north side of the bridge. This is a historic bridge. We don't wanna add a lot of weight to it, although we would like a.

0:29:43.590 --> 0:29:57.600

Nina Mabileau

Fence wall type of facility to protect the bikes and pedestrians from traffic. And then as you move eastward along Columbus Drive, there may be some driveway transitions, some ADA improvements, but a lot of that.

0:29:58.650 --> 0:30:4.880

Nina Mabileau

It's included in the Counties Project, which I believe is going to be funded in their fiscal year coming up 24.

0:30:6.90 --> 0:30:8.500

Nina Mabileau

Now on segment 6.

0:30:10.80 --> 0:30:22.330

Nina Mabileau

Which proceeded southward from Columbus, that's along Glenwood Drive. We basically interested in making that a bike Blvd. It has a wide 50 foot median and it currently.

0:30:23.740 --> 0:30:24.390

Nina Mabileau

So.

0:30:26.520 --> 0:30:30.830

Nina Mabileau

We we're looking forward to seeing your proposals on how you can.

0:30:31.940 --> 0:30:49.550

Nina Mabileau

Enhance this connection to the South. It goes a little bit E on Ross and then southward to the river. We have public right away right of way here called Cruise Cade Blvd. 50 foot right away. And then there's a there could be an alternate alignment.

0:30:52.80 --> 0:30:56.10

Nina Mabileau

Moving the trail eastward, a budding uh N Blvd.

0:30:56.740 --> 0:30:59.50

Nina Mabileau

So because of the.

0:31:0.600 --> 0:31:10.830

Nina Mabileau

Slope of the roadway because N Boulevard is high here and crews arcade is low, please include in your.

0:31:11.780 --> 0:31:21.450

Nina Mabileau

And your bid, the more expensive option please. And if we go down to the on, you know, the cruiser came right away then.

0:31:23.190 --> 0:31:24.460

Nina Mabileau

No harm, no foul.

0:31:25.410 --> 0:31:32.600

Nina Mabileau

And as this it will cross under N Blvd and the connection to the existing river walk is here.

0:31:33.270 --> 0:31:34.370

Nina Mabileau

In the heights area.

0:31:36.410 --> 0:31:41.40

Nina Mabileau

So as Jim mentioned, the schedule is in the RFP.

0:31:48.120 --> 0:32:16.200

Nina Mabileau

We're gonna try to hold to this as much as possible because changes to the schedule do have an impact to the federal grant as well. March 10th is the deadline for submittal beyond today submittal of written RFQ questions and then March 20th is the deadline for your statements of qualifications for our review. By April 11th, we expect to short list the top three firms and proceed have them proceed to the RFP stage.

0:32:17.210 --> 0:32:33.860

Nina Mabileau

May 3rd is there's only gonna be one round of ATC's alternative technical concepts by each firm, so you'd submit a preliminary list by May 3rd, and you can refer to your schedule. The city will evaluate those let you know.

0:32:34.670 --> 0:32:38.730

Nina Mabileau

Which you can proceed with as you move into your RFP.

0:32:41.160 --> 0:32:44.570

Nina Mabileau

I think there's about four months between short listing and.

0:32:45.430 --> 0:32:46.940

Nina Mabileau

Are of peace submittals.

0:32:49.220 --> 0:32:55.70

Nina Mabileau

And we expect to award the contract later this fall.

0:32:56.100 --> 0:32:57.510

Nina Mabileau

A substantial completion.

0:32:58.530 --> 0:33:2.180

Nina Mabileau

Is end of 2026 based on the grant monies?

0:33:3.250 --> 0:33:10.250

Nina Mabileau

Expiring in mid 27, which is when we should be doing final completion, wrap up paperwork, etcetera.

0:33:12.380 --> 0:33:20.150

Nina Mabileau

So as Jim mentioned, he's the only point of contact during this procurement process I've got here his e-mail address, his.

0:33:21.940 --> 0:33:26.960

Nina Mabileau

Contract admin address and his phone number and we do have a website for the project.

0:33:27.830 --> 0:33:32.400

Nina Mabileau

Uh, which is tampa.gov/W river build?

0:33:34.310 --> 0:33:38.440

Nina Mabileau

So now we can take questions. Let me stop sharing.

0:33:50.80 --> 0:33:51.170

Lara Bouck

We have one hand up either.

0:33:51.890 --> 0:33:52.410

Nina Mabileau

Umm.

0:33:54.100 --> 0:33:57.930

Nina Mabileau

OK. UM, Mr. Robinson.

0:34:0.920 --> 0:34:2.530

Nina Mabileau

Your question. Yes, Sir.

0:34:4.630 --> 0:34:6.250

Nina Mabileau

OK, that's Umm.

0:34:0.950 --> 0:34:12.770

Joseph W. J. Robinson P.E.

Can you hear me? Yeah. I got three questions. One, the first question is when will you identify publicly who the evaluation team numbers are?

0:34:13.710 --> 0:34:30.580

Joseph W. J. Robinson P.E.

That's the first question you ain't got answered now, but this is for the record. I expect to see answer published to put somewhere. When were you identify under section 2.5. The names of the people that are on the evaluation team. So the public would know who they are and to stay away from talking to them.

0:34:31.700 --> 0:34:45.950

Joseph W. J. Robinson P.E.

The second thing is, is that as the West Ham versus CR AC AC vice chair, we're gonna request, I'm asking you, would you consider embedding a member of the West Tampa CRA?

0:34:57.780 --> 0:34:58.160

Nina Mabileau

OK.

0:34:46.690 --> 0:35:11.330

Joseph W. J. Robinson P.E.

To be on the final evaluation committee of the RFP team that was done on wrong yard. That's the second question. You ain't gotta answer it now, but I'm asking you to take a look at that. The mayor has done that on wrong yard, and since it's a major project on West Tampa specifically, a lot of it in the CR, a boundary if not only in the CR from the river.

0:35:12.10 --> 0:35:19.940

Joseph W. J. Robinson P.E.

Uh, so that we don't have someone from our CR, a group embedded in the selection process like was done with Rome Yard.

0:35:20.710 --> 0:35:27.520

Joseph W. J. Robinson P.E.

And then final question is is that will shortlisted teams meaning the teams that will?

0:35:28.40 --> 0:35:48.510

Joseph W. J. Robinson P.E.

Ohh half will that will submit an RFP having EB O Outreach event. They help vendors get on their team. Vendors aren't gonna get on these teams on the front end but once they know that there's three finalists then they'd be good to have an ABO event.

0:35:49.560 --> 0:36:18.590

Joseph W. J. Robinson P.E.

Because I know that the man's executive order for design build selection doesn't have that yet, but it's being considered in the change that's coming up. And I know that the county does that and it's a great way for EVOO vendors to meet with those 3 firms that are shortlisted and trying to get on a winning team. So those are my three questions. I don't need a quick jerk answering that, but I expect they those to be posted and some kind of way identified.

0:36:18.820 --> 0:36:25.770

Joseph W. J. Robinson P.E.

Especially who gonna be on this evaluation team and I appreciate the time you do a very good job on explaining this and thank you.

0:36:26.480 --> 0:36:36.510

Nina Mabileau

Thank you, Mr. Robinson, I don't have specific answers for those, but let me mention that the city has done 3 subcontractor outreach events.

0:36:38.500 --> 0:36:41.190

Nina Mabileau

To this summer last summer and.

0:36:41.980 --> 0:36:43.50

Nina Mabileau

Last December.

0:36:43.780 --> 0:36:45.290

Nina Mabileau

That we have been doing for this.

0:36:45.450 --> 0:37:13.40

Nina Mabileau

Specific project and I assume yes, the the evaluation team will be made public, but let me point out which I failed to mention earlier. This is an adjusted score design build. Well, Jim mentioned it, so the top three proposers on the RFP are gonna submit technical proposals and then sealed prices that accompany those technical proposals.

0:37:13.810 --> 0:37:21.490

Nina Mabileau

And when those are opened by the evaluation committee, which consists of CCNA regular members.

0:37:22.650 --> 0:37:32.350

Nina Mabileau

It's basically a mathematical equation. The price proposal divided by their technical score. The low bidder is the winning bidder, the lowest.

0:37:32.450 --> 0:37:44.530

Nina Mabileau

Uh. Number resulting from that equation, so I will discuss with contract admin your question specifically and see if we can't get some specific answers back to you.

0:37:45.350 --> 0:37:46.200

Joseph W. J. Robinson P.E.

Thank you very much.

0:37:46.530 --> 0:37:46.920

Nina Mabileau

Sure.

0:37:49.120 --> 0:37:49.830

Nina Mabileau

Uh.

0:37:51.310 --> 0:37:54.970

Nina Mabileau

Mr. Robinson, any more questions, please raise your hand.

0:38:1.740 --> 0:38:4.760

Nina Mabileau

Tony monks with the Parks Department is here if you.

0:38:5.990 --> 0:38:8.520

Nina Mabileau

Have any concerns about the?

0:38:10.20 --> 0:38:13.200

Nina Mabileau

Trail that is not in the right way but along the river.

0:38:20.470 --> 0:38:22.270

Nina Mabileau

Mr Fry's.

0:38:24.240 --> 0:38:27.410

Justin Fries, PE, DBIA

Yeah. Hey, how's it going? Is this an appropriate place to ask?

0:38:29.530 --> 0:38:34.510

Justin Fries, PE, DBIA

Questions regarding the LOI response or should we just post those questions?

0:38:35.110 --> 0:38:39.380

Nina Mabileau

Sure, go ahead and ask Mr Grinders here. He's the manager for contracts admin.

0:38:39.960 --> 0:38:46.730

Justin Fries, PE, DBIA

Yeah, there was a question we were talking about on our team. I just like the cities clarification, one of the.

0:38:47.860 --> 0:38:59.100

Justin Fries, PE, DBIA

Uh response criteria is for us to discuss what we see. I believe the terminology that's used in the in the criteria is risks, and we're supposed to list three of them.

0:39:1.140 --> 0:39:3.180

Justin Fries, PE, DBIA

Does the city interpret that as?

0:39:4.520 --> 0:39:12.240

Justin Fries, PE, DBIA

How a contractor would interpret risk, which is a quantifiable and you know quantifiable.

0:39:12.320 --> 0:39:25.690

Justin Fries, PE, DBIA

No entity, something like. There's a, you know, a utility in the ground that we could we could hit with a,

with a pile, or there's a schedule risk because of utility or whatever. Or is it more intended to be project challenges?

0:39:28.870 --> 0:39:29.230

Nina Mabileau

M.

0:39:31.510 --> 0:39:37.280

Jim Greiner

Yep, there are. Uh, the things that their first description is the likely one.

0:39:38.430 --> 0:39:44.170

Jim Greiner

Where you've analyzed the risks and there's actual risk calculations that you can.

0:39:45.220 --> 0:39:47.900

Jim Greiner

Uh, demonstrate in your response if you need to.

0:39:50.320 --> 0:39:53.380

Justin Fries, PE, DBIA

OK. So you mean it from a contractors risk?

0:39:55.100 --> 0:39:55.360

Jim Greiner

Right.

0:39:54.160 --> 0:40:0.310

Justin Fries, PE, DBIA

Well, City slash contractors are is not a project challenges like you know.

0:40:5.940 --> 0:40:7.410

Justin Fries, PE, DBIA

Thank you. Thank you, Jim.

0:39:59.410 --> 0:40:8.580

Jim Greiner

Yeah, not we're not looking for the Miss America question answers. It's the, it's the real reality check.

That's what we're doing.

0:40:8.30 --> 0:40:10.860

Justin Fries, PE, DBIA

That's exactly what I was wanting you to say. Thank you, Sir. Appreciate that.

0:40:11.170 --> 0:40:11.580

Jim Greiner

OK.

0:40:16.640 --> 0:40:17.630

Nina Mabileau
Further questions.

0:40:19.150 --> 0:40:24.260

Nina Mabileau
The sheer opportunity when we're all here virtually face to face, literally.

0:40:25.410 --> 0:40:27.790

Nina Mabileau
Because otherwise they'll all have to be in writing.

0:40:30.840 --> 0:40:38.250

Nina Mabileau
There will be a second deadline for written questions for the RFP. As uh, the procurement progresses in the future.

0:40:42.160 --> 0:40:43.430

Nina Mabileau
Mr Robbins.

0:40:44.760 --> 0:40:56.290

Jordan Robbins
Yeah. Good afternoon. I just had a question about the questions really is will they be posted responses immediately or is there a defined date that you intend to give answers for any of questions posted by e-mail?

0:40:57.990 --> 0:41:6.420

Nina Mabileau
We try to turn those around as rapidly as possible. Jim, do we have a hard deadline like within two days or something to that effect?

0:41:14.790 --> 0:41:15.690

Nina Mabileau
I think we made.

0:41:8.240 --> 0:41:18.960

Jim Greiner
The thing is, if questions come in too late, we might not be able to answer them timely and so you can go ahead and do questions whenever you want to. But.

0:41:19.240 --> 0:41:47.670

Jim Greiner
Uh, after within, I think it's like 10 days or a week before the deadline. We're not necessarily able to answer them. And so you wanna get them in and we'll answer the material questions that by a posting an addendum on the site, if we can, we might try to find a way to post a.

0:41:48.480 --> 0:41:57.840

Jim Greiner

The transcript of this meeting here, in case you're not able to jot down all of the contacts you were looking for in the chat zone.

0:42:1.550 --> 0:42:7.20

Nina Mabileau

Umm, Jim, do you see the comment that Mark Orler posted?

0:42:8.510 --> 0:42:9.940

Nina Mabileau

Asking about a list of.

0:42:10.760 --> 0:42:17.310

Nina Mabileau

Qualified public contractors participating in the RFP prior to the April 11th deadline. Yes, the.

0:42:18.560 --> 0:42:20.710

Nina Mabileau

Oh, he wants to know.

0:42:22.50 --> 0:42:23.680

Nina Mabileau

I don't know that answer, Jim.

0:42:27.70 --> 0:42:27.310

Jim Greiner

That.

0:42:26.430 --> 0:42:29.710

Nina Mabileau

Before the shortlist comes out, is there a list of the?

0:42:30.680 --> 0:42:33.940

Nina Mabileau

The submitters, if you will. I guess he's asking.

0:42:35.910 --> 0:42:37.680

Jim Greiner

Yeah, we weren't planning on that.

0:42:40.730 --> 0:42:41.850

Nina Mabileau

The short list is.

0:42:43.810 --> 0:42:44.770

Nina Mabileau

Is the list.

0:42:43.140 --> 0:42:47.350

Jim Greiner

That so we won't necessarily publish the long list we don't usually.

0:42:51.330 --> 0:42:56.130

Jim Greiner

So the answer to that is maybe and keep an eye on the site.

0:43:6.60 --> 0:43:6.440

Nina Mabileau

OK.

0:43:6.490 --> 0:43:9.540

Gregory Hart

Nick Nana, would that information not be?

0:43:11.90 --> 0:43:15.380

Gregory Hart

Noted on demand star in terms of plan holders or?

0:43:16.770 --> 0:43:18.560

Gregory Hart

Or would one just go to the?

0:43:19.480 --> 0:43:20.570

Gregory Hart

W Riverside.

0:43:21.580 --> 0:43:22.70

Gregory Hart

Ohh.

0:43:21.410 --> 0:43:24.960

Jim Greiner

The the plan holders the list on demand star.

0:43:25.940 --> 0:43:29.300

Jim Greiner

On list, anybody who clicked on the RFQ.

0:43:30.920 --> 0:43:33.860

Jim Greiner

So you won't be able to tell who actually submitted.

0:43:36.520 --> 0:43:39.230

Jim Greiner

So we'll we'll try to get that.

0:43:38.780 --> 0:43:44.800

Nina Mabileau

I suppose when, Umm, on the date we receive this submittals SOQL we could post something Jim.

0:43:45.240 --> 0:43:45.630

Jim Greiner

Right.

0:43:46.70 --> 0:43:47.550

Nina Mabileau

But that's only uh.

0:43:48.820 --> 0:43:52.630

Nina Mabileau

What, three weeks or so prior to the shortlist coming out?

0:43:59.570 --> 0:44:0.660

Nina Mabileau

Mr Goosen?

0:44:2.680 --> 0:44:3.300

Nina Mabileau

Scott.

0:44:4.410 --> 0:44:5.220

Nina Mabileau

You have a question?

0:44:4.630 --> 0:44:18.290

Scott Gossen

Uh, yeah, yeah, yeah. Quick question. Nina, I think we talked about this a while ago when we're going through it, but the the background check requirement for the contractors that'll be working on campus, these adjacent schools, is that spelled out quite clearly in the document?

0:44:33.50 --> 0:44:33.200

Scott Gossen

Yeah.

0:44:19.210 --> 0:44:34.970

Nina Mabileau

It's only applicable actually to Tampa Prep that has students that haven't graduated high school, but I think that's something that you're gonna talk with Abby Feely about and you're negotiations or plant park and the easement.

0:44:35.840 --> 0:44:36.690

Scott Gossen

Sounds good. Thank you.

0:44:37.810 --> 0:44:44.640

Nina Mabileau

So I I the city has deeded property around the two public schools, Blake and.

0:44:45.490 --> 0:44:48.610

Nina Mabileau

Stewart and which are fenced off already.

0:44:49.310 --> 0:44:49.950

Nina Mabileau

So.

0:44:51.750 --> 0:45:6.410

Nina Mabileau

The If you're, if you call it the Jessica Lunsford doesn't really apply to universities, but we're aware that UT desire something to that effect, so I assume this feeling is working on that.

0:45:7.160 --> 0:45:8.90

Scott Gossen

Sounds good. Thank you.

0:45:22.650 --> 0:45:23.20

Jim Greiner

As.

0:45:23.700 --> 0:45:24.110

Jim Greiner

Yes.

0:45:21.850 --> 0:45:25.220

Nina Mabileau

Jim, do you see the question about the size of the SQ?

0:45:25.350 --> 0:45:27.20

Jim Greiner

Yeah, I thought we had a.

0:45:27.920 --> 0:45:30.550

Jim Greiner

And I was trying to look it up a.

0:45:31.440 --> 0:45:35.70

Jim Greiner

Number of megabytes but not a page restriction.

0:45:35.600 --> 0:45:35.890

Nina Mabileau

Umm.

0:45:37.290 --> 0:45:38.310

Nina Mabileau

File size.

0:45:45.150 --> 0:45:46.860

Nina Mabileau

Yeah, looking in in it right now.

0:45:56.630 --> 0:46:1.900

Nina Mabileau

And it might only be in the RFP. It might not be in the RFQ, which is why they're asking about the SOQ.

0:46:4.320 --> 0:46:7.310

Jim Greiner

That's our Q is the only place you would have that restriction.

0:46:8.580 --> 0:46:8.770

Nina Mabileau

Umm.

0:46:8.830 --> 0:46:9.740

Jim Greiner

I don't think we did.

0:46:12.850 --> 0:46:13.960

Nina Mabileau

We will have to publish that.

0:46:26.340 --> 0:46:29.190

Nina Mabileau

Scott, you have your hand up again or hasn't been put down.

0:46:33.530 --> 0:46:36.630

Scott Gossen

Yeah, it it. It just hasn't been put down, you know. Thank you.

0:46:36.730 --> 0:46:37.370

Nina Mabileau

OK. Thank you.

0:46:40.700 --> 0:46:42.380

Nina Mabileau

Well, we're here so.

0:46:43.980 --> 0:46:45.720

Nina Mabileau

If you have any questions. Uh.

0:46:46.490 --> 0:46:47.0

Nina Mabileau

Wilbur.

0:46:48.0 --> 0:46:48.460

Nina Mabileau
Nate.

0:46:48.810 --> 0:47:3.220

Willbur, Nate

Ohh yes, I do have a question about the RFP. So right now there are some references to the FDM in there and some of the references are FDM that has been sunset. Do you have a year of the FDM that you would like us to reference when designing these plans?

0:47:4.940 --> 0:47:12.370

Nina Mabileau

I will check our documents if we're calling FDM which is been sunset as you.

0:47:13.330 --> 0:47:14.200

Nina Mabileau

So.

0:47:15.80 --> 0:47:17.320

Nina Mabileau

We'll look at if that's a.

0:47:18.410 --> 0:47:22.600

Nina Mabileau

If there's a replacement document for that, but I'll have to get back with my team.

0:47:23.860 --> 0:47:24.150

Willbur, Nate

OK.

0:47:24.910 --> 0:47:25.310

Willbur, Nate

Thank you.

0:47:23.560 --> 0:47:25.380

Nina Mabileau

So I couldn't tell you that off the top of my head.

0:47:27.520 --> 0:47:37.160

Tony Monk

And it may be helpful to our city staff if you can submit your question and list the ones that have been sunset and then we can go find those replacements.

0:47:38.370 --> 0:47:39.20

Willbur, Nate

Absolutely.

0:47:40.420 --> 0:47:40.820

Nina Mabileau

Thank you.

0:47:46.270 --> 0:47:53.130

Jim Greiner

Yeah, I'm not finding a size list size requirement. We may not have one if we have one.

0:47:54.580 --> 0:47:59.730

Jim Greiner

Developed. We'll add it by addendum, but we may not be restricting the size.

0:48:1.910 --> 0:48:2.250

Nina Mabileau

OK.

0:48:19.950 --> 0:48:22.140

Jim Greiner

I'm going up to the last call for questions.

0:48:24.780 --> 0:48:26.540

Nina Mabileau

We have 56 attendees.

0:48:47.730 --> 0:48:48.700

Nina Mabileau

We just got another.

0:48:49.490 --> 0:48:50.870

Nina Mabileau

Written request.

0:49:1.330 --> 0:49:2.830

Nina Mabileau

And you answer this question, Jim.

0:49:3.780 --> 0:49:4.560

Nina Mabileau

In the chat.

0:49:6.190 --> 0:49:7.10

Jim Greiner

I I don't.

0:49:5.930 --> 0:49:9.120

Nina Mabileau

Attachment five is the DPR information table.

0:49:20.100 --> 0:49:20.850

Jim Greiner

No.

0:49:25.640 --> 0:49:31.170

Nina Mabileau

For lack of a better place, I don't see why I couldn't. Couldn't be included on attachment 5.

0:49:32.110 --> 0:49:36.390

Jim Greiner

Yeah, you could, but we're not like requiring something at this point.

0:49:38.680 --> 0:49:39.460

Jim Greiner

And if we?

0:49:40.180 --> 0:49:41.850

Jim Greiner

Suddenly want to require something.

0:49:43.60 --> 0:49:45.810

Jim Greiner

We did dynamize that out, but right now I'm not thinking.

0:49:46.870 --> 0:49:47.300

Nina Mabileau

OK.

0:49:47.400 --> 0:49:48.550

Jim Greiner

That that's applicable.

0:49:51.760 --> 0:49:53.950

Nina Mabileau

Unless there's an addendum on that, I would say.

0:49:54.680 --> 0:49:58.410

Nina Mabileau

To Carmen, yes. Uh put it there.

0:49:59.970 --> 0:50:0.430

Jim Greiner

Sure.

0:50:28.150 --> 0:50:30.120

Nina Mabileau

Yes, we're all excited for the project.

0:50:31.540 --> 0:50:38.620

Nina Mabileau

Because it's only conceptual at this stage, once we have the design build firm under contract.

0:50:39.520 --> 0:50:52.260

Nina Mabileau

We can proceed with design and it's up to the chosen design build firm how they choose to design and build it should they wanna do all the design at the front end or.

0:50:53.810 --> 0:51:0.500

Nina Mabileau

Uh. Perhaps start construction on some segments while they're designing others. That's all up to them.

0:51:7.30 --> 0:51:10.990

Nina Mabileau

Uh, Jim. DC Mr Grabinger's uh comment in the chat.

0:51:12.960 --> 0:51:31.530

Jim Greiner

Yeah, we're thinking that we usually just publish by addendum questions that materially affect the bid questions that that are otherwise answered by just directing people to the sections of the RFQ that they may have overlooked or not be.

0:51:32.580 --> 0:51:33.100

Jim Greiner

Uh.

0:51:33.960 --> 0:51:36.150

Jim Greiner

Published and so forth.

0:51:40.520 --> 0:51:47.190

Nina Mabileau

If we think there's uh, pertinence to all bidders than yes, we'll publish those, Mr Gremminger.

0:51:58.990 --> 0:52:1.190

Nina Mabileau

Well, looks like we're not going to need 2 hours today.

0:52:2.330 --> 0:52:3.210

Jim Greiner

Looking good.

0:52:3.970 --> 0:52:5.680

Joseph W. J. Robinson P.E.

And got my hand raised up.

0:52:6.240 --> 0:52:6.390

Jim Greiner

Uh.

0:52:5.930 --> 0:52:6.590

Nina Mabileau

I'm sorry.

0:52:7.850 --> 0:52:10.390

Nina Mabileau

I don't see it on my end and you are.

0:52:10.790 --> 0:52:11.840

Jim Greiner

That's Joe Robinson.

0:52:13.260 --> 0:52:17.20

Nina Mabileau

Oh, hi. I see it now. Yes, Mr. Robinson. You have another?

0:52:16.510 --> 0:52:21.300

Joseph W. J. Robinson P.E.

Yeah, based on what Jim just said, but I got three questions I asked.

0:52:22.400 --> 0:52:22.730

Nina Mabileau

Yes.

0:52:24.20 --> 0:52:24.410

Jim Greiner

That the.

0:52:22.170 --> 0:52:28.0

Joseph W. J. Robinson P.E.

Bain and writing and I spit a written response to my three questions. And.

0:52:27.730 --> 0:52:29.580

Jim Greiner

Yeah, those those are the.

0:52:29.80 --> 0:52:32.470

Joseph W. J. Robinson P.E.

I mean, they not may be they may not be material in the.

0:52:33.80 --> 0:52:33.860

Joseph W. J. Robinson P.E.

Uh.

0:52:35.240 --> 0:52:41.420

Joseph W. J. Robinson P.E.

Country of proposed documents the bidding documents sign bill criteria, whatever you call it.

0:52:44.850 --> 0:52:45.580

Jim Greiner

Yeah, yeah.

0:52:42.130 --> 0:52:50.480

Joseph W. J. Robinson P.E.

A request for qualifications, but I wanna answer to those because the community on the West side of the river here called the West Tampa CR, says the branch committee.

0:52:53.400 --> 0:52:53.800

Jim Greiner

Right, we.

0:52:57.380 --> 0:52:58.390

Jim Greiner

Joe, Joe, we've got.

0:52:51.100 --> 0:52:58.810

Joseph W. J. Robinson P.E.

Ohh would like a answer so we can make a decision. Do we need to take this to another level so we're waiting on that?

0:53:0.20 --> 0:53:0.350

Jim Greiner

Right.

0:52:59.770 --> 0:53:5.120

Joseph W. J. Robinson P.E.

And so as we get an answer, that's the better off we'll be and that's all I'm saying is gonna make sure they get answers.

0:53:6.100 --> 0:53:6.530

Joseph W. J. Robinson P.E.

OK.

0:53:5.970 --> 0:53:10.510

Jim Greiner

Yeah, Joe, we got those three questions down for actual publication.

0:53:11.580 --> 0:53:13.260

Joseph W. J. Robinson P.E.

Thank you, Mr Grant. I love you.

0:53:15.690 --> 0:53:19.780

Nina Mabileau

And we have been working with Carlos Ramirez, who was.

0:53:20.710 --> 0:53:23.640

Nina Mabileau

Elected by the group as the representative so.

0:53:24.470 --> 0:53:27.320

Nina Mabileau

We been working with him in the past and.

0:53:29.340 --> 0:53:33.650

Nina Mabileau

Will continue to do so, as well as answering any questions you might have.

0:53:36.90 --> 0:53:38.140

Nina Mabileau

Umm, I saw another hand up.

0:53:39.320 --> 0:53:41.30

41af6340-de8b-4146-9cf0-80d281ac0428

Yes. Do you hear me?

0:53:40.760 --> 0:53:42.470

Nina Mabileau

Villard, do you wanna go ahead?

0:53:43.240 --> 0:53:48.90

41af6340-de8b-4146-9cf0-80d281ac0428

Yes, the information in the uh meeting chat will that be available?

0:53:50.820 --> 0:53:55.910

41af6340-de8b-4146-9cf0-80d281ac0428

All the information that's listed in the chat, will that be available as well in writing?

0:53:57.910 --> 0:53:58.220

Jim Greiner

We're.

0:53:58.130 --> 0:53:58.800

41af6340-de8b-4146-9cf0-80d281ac0428

Versus.

0:53:59.650 --> 0:54:0.810

Jim Greiner

What? What? We're gonna.

0:53:57.660 --> 0:54:4.600

Nina Mabileau

I am not sure of that. We are transcribing and recording this meeting, so I would assume that's.

0:54:5.390 --> 0:54:6.670

Nina Mabileau

Going to be transcribed.

0:54:7.520 --> 0:54:8.700

Jim Greiner

Yeah, we will try to.

0:54:9.500 --> 0:54:17.450

Jim Greiner

PDF that information and post it with the addendum that'll have Joe's questions on that as well.

0:54:22.970 --> 0:54:27.380

41af6340-de8b-4146-9cf0-80d281ac0428

Because I would say that for the proposers, a lot of information in that chat.

0:54:28.500 --> 0:54:33.830

41af6340-de8b-4146-9cf0-80d281ac0428

Should be valuable to them, so if they don't have access to that.

0:54:33.460 --> 0:54:43.550

Jim Greiner

Right. That's why we had everybody list their name and e-mail address in the chat so that it could be made available to everybody.

0:54:45.310 --> 0:54:49.190

41af6340-de8b-4146-9cf0-80d281ac0428

Right. That was the question. You're gonna make that available to everybody you are.

0:54:48.900 --> 0:54:50.10

Jim Greiner

Right, right.

0:54:51.180 --> 0:54:52.110

Nina Mabileau

Yes, Sir. Thank you.

0:54:51.960 --> 0:54:58.600

Jim Greiner

I think we can construct that into a PDF format and it can be published with the addendum.

0:55:2.790 --> 0:55:15.130

Nina Mabileau

Now, because this is a federal project, I believe that the FHWA has to approve the addendum before we issue it. So we will get on that right away. So we can get that published as soon as possible.

0:55:22.550 --> 0:55:23.680

Nina Mabileau

Thank you everyone.

0:55:24.450 --> 0:55:28.780

Nina Mabileau

We're coming, and if you have further questions, you can submit them in writing.

0:55:29.890 --> 0:55:32.230

Nina Mabileau

Uh, before the deadline of.

0:55:33.110 --> 0:55:33.760

Nina Mabileau

March 10th.

0:55:34.910 --> 0:55:43.310

Nina Mabileau

And we look forward to it and exciting project and we're anxious to team up with you.

0:55:46.310 --> 0:55:49.340

Jim Greiner

Thanks again and we are adjourned.

0:55:51.580 --> 0:55:53.60

Nina Mabileau

Thank you, everybody. Have a good weekend.

0:55:54.330 --> 0:55:54.800

Jordan Robbins

Thank you.

0:55:55.570 --> 0:55:56.60

Ed Ponce

Thank you.

22-C-00001 Build Project Pre-Submission Meeting Chat File

[2/17 1:59 PM]

Brandie Miklus was invited to the meeting.

[2/17 1:59 PM]

Dan Egan (Guest) and 22 others were invited to the meeting.

[2/17 2:00 PM]

Scott Potter and 8 others were invited to the meeting.

[2/17 2:01 PM]

Gabrielle Soares was invited to the meeting.

[2/17 2:01 PM]

Joe Distefano and Michelle DeMoss (Guest) were invited to the meeting.

[2/17 2:01 PM]

Herrman, Michael and Kenneth Moore (Guest) were invited to the meeting.

[2/17 2:01 PM]

Herrman, Michael left the chat.

[2/17 2:02 PM]

Herrman, Michael was invited to the meeting.

[2/17 2:02 PM]

Brandon Hinson was invited to the meeting.

[2/17 2:02 PM]

Fox, Ryan was invited to the meeting.

[2/17 2:02 PM] Orlor, Mark (Preferred Materials)

Appears even the speaker is muted now.

[2/17 2:02 PM] Justin Fries, PE, DBIA

The speaker has muted themselves

like 1

[2/17 2:03 PM] Villard Houston Jr (Guest)

How do we join via phone

[2/17 2:03 PM] Danni Jorgenson

Dial in manually+19412631615 (Toll)Get local numbersConference ID: 981 349 76#

Conference Dial-in Numbers

[2/17 2:04 PM] Dawkins, Carmen

Carmen DawkinsMichael Baker Internationalcarmen.dawkins@mbakerintl.com

[2/17 2:04 PM] Nina Mabileau

Villard Houston Jr (Guest)How do we join via phonePre-Submission Meeting (Virtual) for prospective Design-Build Firms; <https://www.microsoft.com/en-us/microsoft-teams/join-a-meeting?rtc=1> Meeting ID: 259 900 683 976 Passcode: LiiAZg

Join a Microsoft Teams Meeting by ID | Microsoft Teams

Learn how to join a Microsoft Teams meeting quickly and easily with just a meeting ID. Once you're in, explore Teams features to make your meeting successful.

[2/17 2:04 PM] Dawkins, Carmen

Carmen DawkinsMichael Baker Internationalcarmen.dawkins@mbakerintl.com

[2/17 2:04 PM] Nina Mabileau

Villard Houston Jr (Guest)How do we join via phonePre-Submission Meeting (Virtual) for prospective Design-Build Firms; <https://www.microsoft.com/en-us/microsoft-teams/join-a-meeting?rtc=1> Meeting ID: 259 900 683 976 Passcode: LiiAZg

Join a Microsoft Teams Meeting by ID | Microsoft Teams

Learn how to join a Microsoft Teams meeting quickly and easily with just a meeting ID. Once you're in, explore Teams features to make your meeting successful.

[2/17 2:04 PM] Iosue, Allan

The Haskell Company (Prime)

[2/17 2:04 PM] Justin Fries, PE, DBIA

Justin FriesJohnson Bros CorporationPrime Contractorjrfries@southlandholdings.com407-402-1361

[2/17 2:04 PM]

Chris Ahern left the chat.

[2/17 2:04 PM]

Cobb, Travis was invited to the meeting.

[2/17 2:04 PM] Machel Corbin

Machel Corbin AREHNA Engineering

[2/17 2:04 PM]

Chris Ahern was invited to the meeting.

[2/17 2:04 PM] Iosue, Allan

Allan Iosue - Director of Strategic Accounts - allan.iosue@haskell.com - Haskell

[2/17 2:05 PM]

Sahebkar, Hamid was invited to the meeting.

[2/17 2:05 PM] Hanna Khouri

Hanna Khouri, hkhouri@dynamic-earth.com Florida Regional Manager Mobile: (305) 321-2856 Licensed Professional Engineers throughout the United States Geotechnical, Environmental, Material testing.

[2/17 2:06 PM] Charlie Otero

Charles Otero, Otero Engineering - Civil and Environmental Eng.

[2/17 2:06 PM] Hanna Khouri

Geotechnical, Environmental, traffic & Site Civil services

[2/17 2:06 PM] Charlie Otero

cotero@oteroengineering.com

[2/17 2:06 PM]

Nicole Daniel was invited to the meeting.

[2/17 2:06 PM] Chris Ahern

CHRIS AHERN, MBA Senior Project Manager Maritime and Coastal GHDProudly employee-owned | ghd.com Tampa, FL U.S.A. M 813.765.3990 E chris.ahern@ghd.com

GHD - A company offering engineering, architecture, environmental & construction services

We are committed to addressing the world's biggest challenges in the areas of water, energy and communities. GHD is a global network of multi-disciplinary professionals providing clients with integ...

[2/17 2:07 PM]

Kenneth Moore (Guest) was invited to the meeting.

[2/17 2:08 PM] Michelle DeMoss

Michelle DeMoss - PCL Construction - mrdemoss@pcl.com

[2/17 2:08 PM]

Dan Egan (Guest) was invited to the meeting.

[2/17 2:09 PM] Kristen Lawlor

Kristen Lawlor, Senior Director of Marketing, KEITHklawlor@keithteam.com MWBE Certified with the City of Tampa civil engineering, transportation/traffic, landscape architecture, surveying and mapping, SUE, construction program management

[2/17 2:09 PM]

Kenneth Moore (Guest) was invited to the meeting.

[2/17 2:10 PM] Hanna Khouri

Mike Miles mmiles@dynamiccec.com Dynamic Engineering Site CivilTrafficSurvey

[2/17 2:10 PM]

Kenneth Moore was invited to the meeting.

[2/17 2:10 PM] Hanna Khouri

Mike Miles mmiles@dynamiccec.com Dynamic Engineering Site CivilTrafficSurvey

[2/17 2:10 PM]

Kenneth Moore was invited to the meeting.

[2/17 2:10 PM] Villard Houston Jr (Guest)

Villard Houston Jr. V H JR & Associates Inc. MBE with City of Tampa 813-931-5546 would like to provide builders risk insurance for the project . Reach out to me for a capability statement

[2/17 2:10 PM]

Townsend, James was invited to the meeting.

[2/17 2:10 PM]

Joseph W. J. Robinson P.E. was invited to the meeting.

[2/17 2:11 PM] Joe Distefano

Joe DiStefano Tierra, Inc - Geotechnical and Materials Testing Services

[2/17 2:11 PM] Nicole Daniel

Nicole Daniel , Construction Lead Development Officer, McKissack & McKissack jdaniel@mckissack.com
407-269-3058

[2/17 2:12 PM] Joe Distefano

jdistefano@tierraeng.com, 813 439-8276

[2/17 2:13 PM]

Boeser, Kenneth J. was invited to the meeting.

[2/17 2:13 PM]

Kenneth Moore left the chat.

[2/17 2:14 PM]

Chris Ahern left the chat.

[2/17 2:15 PM]

Kenneth Moore (Guest) and Chris Ahern were invited to the meeting.

[2/17 2:15 PM]

Skaltsas, Kyle B. was invited to the meeting.

[2/17 2:16 PM]

Dan Egan (Guest) was invited to the meeting.

[2/17 2:18 PM] Mabelle Corbin

Machelle Corbin mcorbin@arehna.com - AREHNA Engineering - Geotechnical & Materials Testing Services - Certified City of Tampa WBE & DBE/SBE w/FDOT. Subconsultant Interest

[2/17 2:18 PM]

Chris Ahern left the chat.

[2/17 2:19 PM]

Kenneth Moore (Guest) and Scott Gossen (External) were invited to the meeting.

[2/17 2:20 PM]

Chris Ahern was invited to the meeting.

[2/17 2:26 PM]

Sandler, Dan (Guest) was invited to the meeting.

[2/17 2:26 PM] Andria LaRocco

Andria LaRocco, S&ME, INC. alarocco@smeinc.com - looking to sub for Environmental, Geotechnical, Vision Zero + Complete Streets/Safety, Accessibility, Mobility expertise, Structures/Bridge Design

[2/17 2:40 PM] Orlor, Mark (Preferred Materials)

Will there be a list made public of all qualified Prime Contractors participating in the RFP prior to the April 11th deadline?

[2/17 2:41 PM]

Skaltsas, Kyle B. left the chat.

[2/17 2:42 PM] Jordan Robbins

Is there a # of pages or file size restriction for the SOQ?

[2/17 2:47 PM] Dawkins, Carmen

The RFQ indicates that Florida DOC registration information should be provided, as well as DBPR. Should DOC information appear on Attachment 5?

[2/17 2:47 PM]

Brad.Williamson left the chat.

[2/17 2:49 PM] Dawkins, Carmen

Thank you.

[2/17 2:49 PM] Danielle Joyce

Thank you to everyone on the call who assisted in preparing the grant application to fund these much needed improvements! This is so exciting and I am extremely elated to finally see this happening!!!

[2/17 2:49 PM] Greminger, Keith

Are all written questions responses distributed to all bidders?

[2/17 2:51 PM] Greminger, Keith

Thank you!

[2/17 2:54 PM] Machel Corbin

Thank you.

[2/17 2:55 PM] Iosue, Allan

Thank you!

[2/17 2:55 PM] Sandler, Dan

Thank you

[2/17 2:55 PM]

Chris Ahern left the chat.

[2/17 2:55 PM] Nicole Daniel

thanks

[2/17 2:55 PM]

Iosue, Allan left the chat.

[2/17 2:55 PM]

Cook, Ellie left the chat.

[2/17 2:55 PM]

Villard Houston Jr (Guest) left the chat.

[2/17 2:55 PM]

Sandler, Dan (Guest) left the chat.

[2/17 2:55 PM]

Kristen Lawlor (Guest) left the chat.

[2/17 2:55 PM]

Del Real, Monica left the chat.

[2/17 2:55 PM]

Robles, Ivan S. left the chat.

[2/17 2:55 PM]

Kenneth Moore (Guest) left the chat.

[2/17 2:55 PM]

Boeser, Kenneth J. left the chat.

[2/17 2:57 PM]

Jones, Fred left the chat.

[2/17 3:23 PM]

2/17 3:23 PM Meeting ended: 2h 1m 17s Transcript