

# West Riverside Heights

Resurfacing and Traffic Calming Plan  
Public Kickoff Meeting February 2, 2023



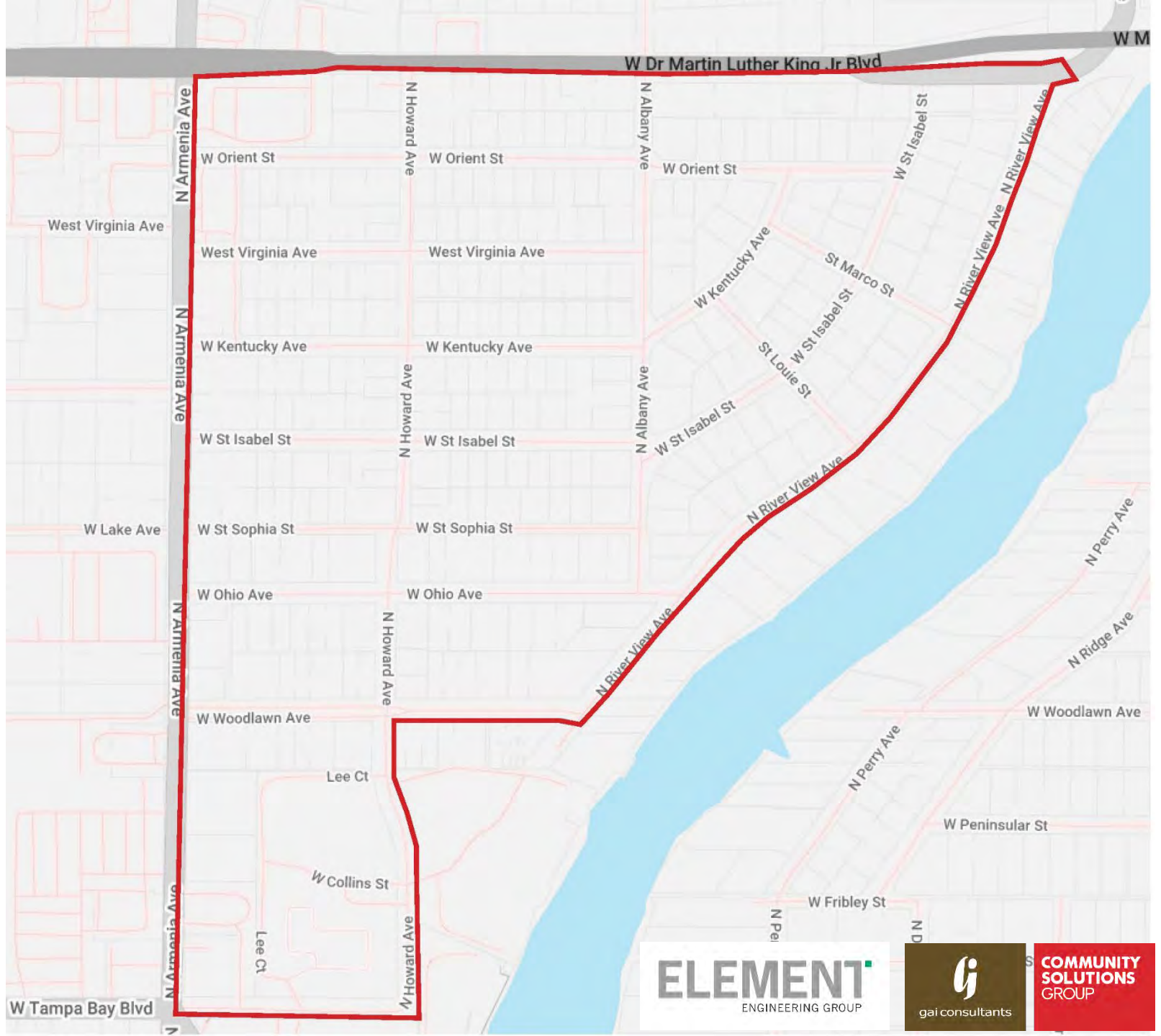


# Welcome!

Tonight's Agenda  
Public Kickoff Meeting  
February 2, 2023

1. Tampa MOVES
2. Project Overview
3. Goals for Tonight
4. Neighborhood Review
5. Your Input and Ideas

## Next Steps





# Meet the Team

City of Tampa  
Florida  
Mobility  
Department



Jorge Uy, P.E., PTOE  
City Lead Project  
Manager



Lara Bouck, P.E., AICP  
Chief Production  
Engineer



Aiah Yassin, AICP  
Mobility Project  
Engineer

ELEMENT  
ENGINEERING GROUP  
Prime  
Consultant  
Transportation &  
Civil Engineering



Derek Gil, P.E.  
President,  
Principal in Charge



Christina Boulnois,  
P.E., PTOE, CPM  
Senior Traffic Engineer



Sub-Consultant  
Community Planning &  
Landscape Architecture



Pete Sechler, PLA, AICP  
Director, GAI / CSG



Ruth Perry, PLA  
Project Manager



Keith Oropeza, PLA  
Landscape Architect



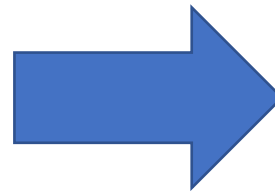
Paloma Prieto  
Landscape Designer



Ana Oropeza, SEG  
Digital Graphics

# Get Connected

[https://www.tampa.gov/mobility/transportation/projects/complete-streets/west\\_riverside\\_heights](https://www.tampa.gov/mobility/transportation/projects/complete-streets/west_riverside_heights)



Language Accessibility Newsroom How can we help? SEARCH

TAMPA.GOV GUIDES BUSINESSSES RECREATION RESIDENTS VISITORS GOVERNMENT JOBS

Mobility Department > Transportation Services > Transportation Capital Improvement Projects > Complete Streets & Safety Improvement Projects > West Riverside Heights Resurfacing and Traffic Calming Plan

PHOTO CREDIT

## West Riverside Heights Resurfacing and Traffic Calming Plan

Updated: 01/19/2023

**MOBILITY HOME**

TRANSPORTATION SERVICES

- Infrastructure Summary Data
- Roundabouts
- Transportation Multi-Modal Fees
- Transportation Services
- Design Standards
- Projects
  - Complete Streets & Safety Improvement Projects
  - Congestion Mitigation
  - Neighborhood Improvements
  - Neighborhood Improvements-Ridgewood Park
  - West Riverside Heights Resurfacing and Traffic Calming Plan**

PARA SOLICITAR UNA TRADUCCIÓN

SUBSCRIBE TO LIST FOR PROJECT'S UPDATES VIA EM...

### Project Location

PROJECT LOCATION

Project falls within City Council District 6

### Project Overview

Project ID: 1002350 | Department ID: TRANS20120 | Contract No: TBD

Contact Information

Vik Bhide  
Director

Office Hours:  
Monday through Friday  
7:30 a.m. to 4:30 p.m.

107 North Franklin Street  
Tampa, Florida 33602

Phone: 813-274-3101  
Fax: 813-274-8901

[More Contact Info](#)

Share this content

Facebook Twitter Email Print

# City of Tampa



# Existing Transportation Assets



2,250  
miles of  
roads



154  
miles of  
bike facilities



51  
bridges



41,000  
streetlights



88,000  
street signs



69  
crosswalks  
with RRFBs



1,000  
miles of  
sidewalk



65  
school  
zones



587  
intersections



277  
miles of  
alleys

# Tampa's Transportation Funding Sources



**Local Option Gas Tax**  
primary funding source  
80% of overall funds

\*Property Taxes  
do not fund  
transportation\*

**\$11 million/year**  
on average



# Our primary funding source is stagnant.



1 gallon  
of gas



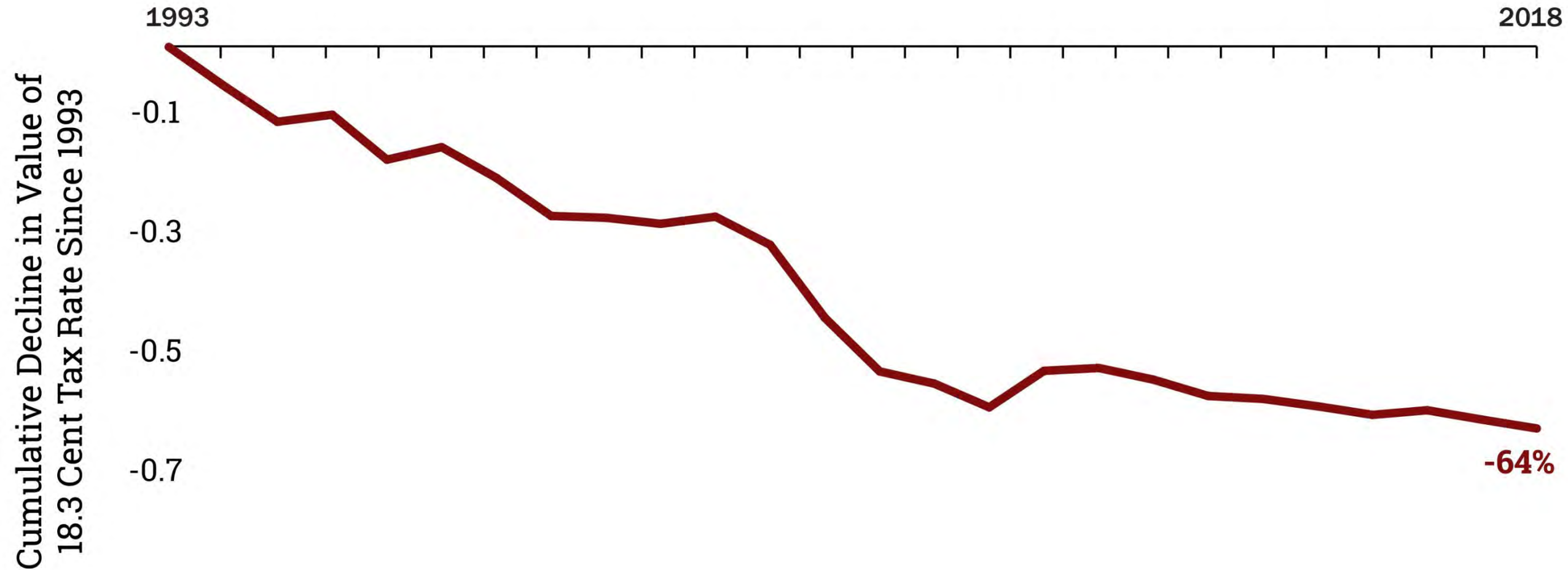
18.3 cents







# Purchasing Power of Federal Gas Tax Rate Has Fallen by Nearly Two-Thirds Because of Inflation and Fuel-Efficiency Gains



Source: Institute on Taxation and Economic Policy (ITEP) analysis of data from the Federal Highway Administration (FHWA), Energy Information Administration (EIA), and Congressional Budget Office (CBO).

What are we doing?





# Mobility Department

Vision: Our vision is to deliver the highest quality transportation and stormwater services to enhance the safety and quality of life within our community.

Mission: Our mission is to provide safe, reliable, and efficient multimodal connectivity, enhanced water quality and flooding relief within the City of Tampa by optimizing resources, implementing best practices, and leveraging innovative technologies.





# Your Vision for Tampa = Tampa MOVES

M

## MOBILITY FOR ALL

Everyone should have access to quality transportation choices.

O

## OPPORTUNITY

Connect people to jobs and economic opportunities.

V

## VISION

Be visionary and dream big! Create a healthy, sustainable, and resilient future.

E

## EQUITY

Remove barriers and improve transportation for people who need it most

S

## SAFETY

Safety is our first priority. One death or injury on our streets is one too many.



# Doing More with Less



Work with Law Enforcement



Safe Routes to Places



Elevate the walking and biking experience



Painted Crosswalks



Street Murals



Public Education Campaigns



# Your City of Tampa Transportation Team!



# Project Overview

## West Riverside Heights Resurfacing and Traffic Calming Plan

1. Resurface all Streets
2. Improve Drainage / Inlets
3. Some Curb & Gutter at Inlets
4. Improve Sidewalks & Crossings
5. Consider Traffic Calming Needs
6. Consider Bike Route Markings
7. Other Street / Access Needs?



# Neighborhood Public Outreach

Begin of Planning  
Activities  
11/14/2022

Conceptual Plan  
03/10/2023

Preliminary  
Design Plans  
03/31/2023

End of Planning  
Activities  
04/14/2023

Public Meeting 1  
02/02/2023

Public Meeting 2  
02/04/2023

Public Meeting 3  
03/30/2023

## Public Meeting 1

- Meeting Purpose/Name: Project Kickoff Public Meeting
- Date: 02/02/2023
- Location: Franciscan Center

## Public Meeting 2

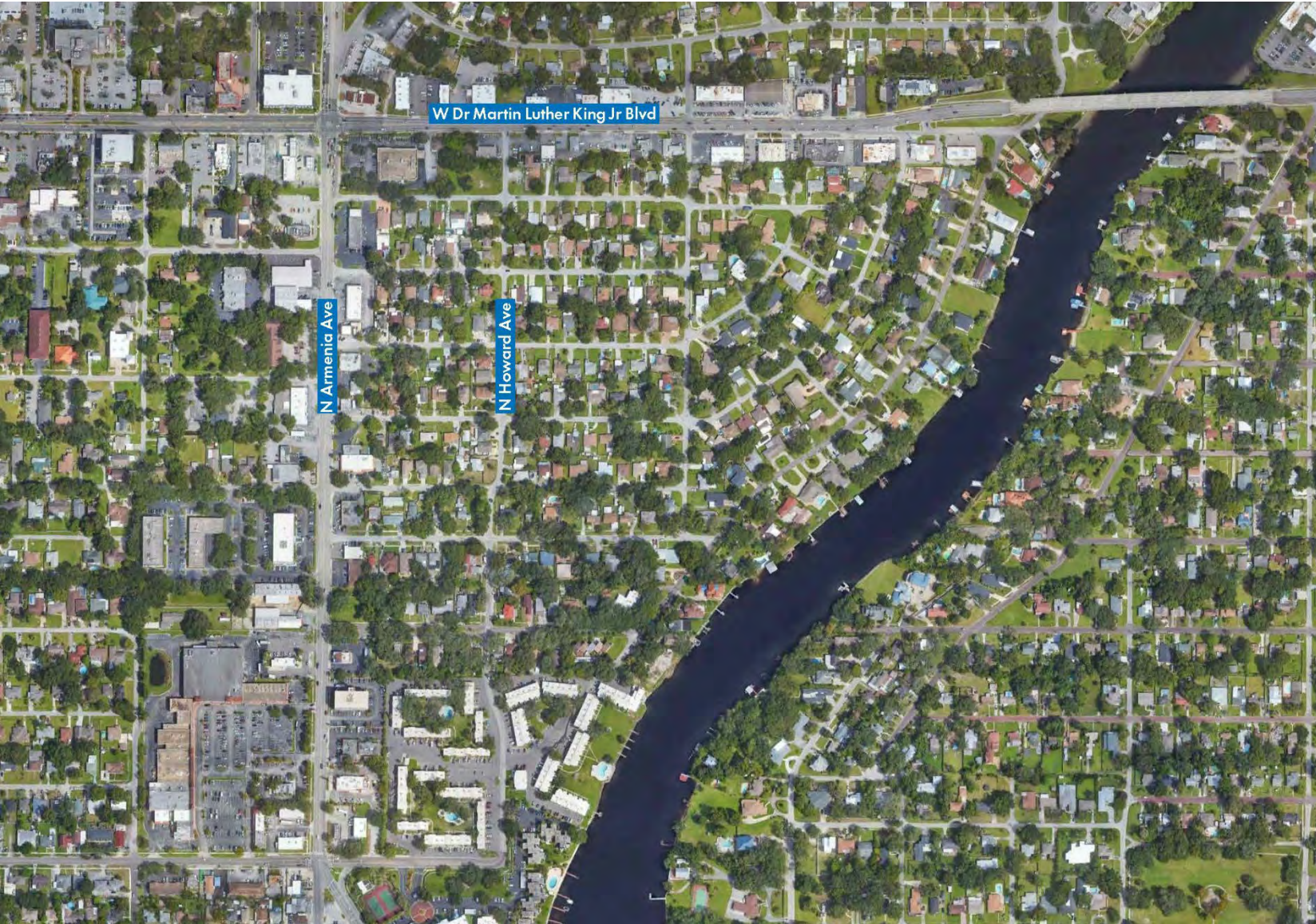
- Meeting Purpose/Name: Neighborhood Walking Tour
- Date: 02/04/2023
- Location: West Riverside Heights Neighborhood

## Public Meeting 3

- Meeting Purpose/Name: Project Update/Conceptual Plan Review Meeting
- Date: 03/30/2023
- Location: TBD



# Looking Holistically and at the Details



# Coordinated with other Local Initiatives

## City of Tampa Water and Wastewater Improvements



### WEST RIVERSIDE HEIGHTS AREA WATER MAIN IMPROVEMENTS

August 2022

#### NOTICE TO RESIDENTS AND PROPERTY OWNERS

The FY20 CIP Water Main Improvements Project is part of the City's Capital Improvement Program (CIP), which includes the design and construction of upgrades to existing water mains and associated equipment that are aged and/or undersized to meet current demand.

As part of this project, the City will be making improvements in your area (see map below) that include the replacement of approximately 9,747 linear feet of water main pipe.

#### PRE-CONSTRUCTION ACTIVITIES

Beginning Monday, August 29, 2022, field crews will begin pre-construction activities that include survey work and utility locations. Pre-construction activities are anticipated to be completed by early September 2022, weather permitting.



#### WHAT TO EXPECT DURING PRE-CONSTRUCTION PHASE

- Activities to occur within the public right-of-way
- Flagging operations to aid traffic flow, as needed
- Access to residential properties will be maintained at all times
- No anticipated interruptions to trash and recycling collection or mail delivery

#### VISIT THE PROJECT WEBSITE



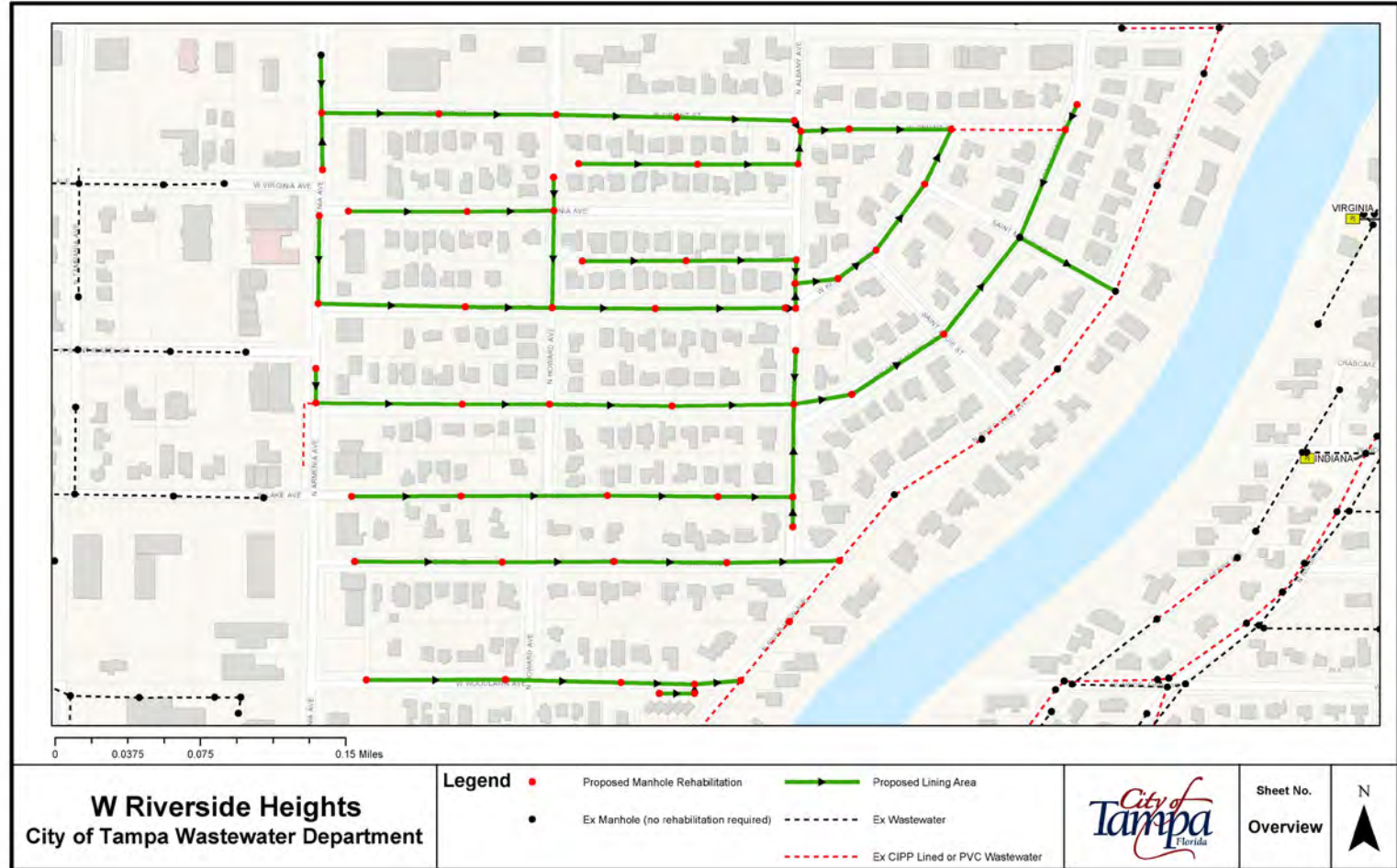
For project updates and notifications, scan the QR code to visit the project website.

#### QUESTIONS? CONTACT US!

For questions or concerns regarding water main construction activities, please contact our Community Outreach Specialist.

(813) 649-3384

info@tampawaterfy20cip.com



### W Riverside Heights City of Tampa Wastewater Department

- |   |   |       |                                 |
|---|---|-------|---------------------------------|
| • | Proposed Manhole Rehabilitation         | →     | Proposed Lining Area            |
| • | Ex Manhole (no rehabilitation required) | - - - | Ex Wastewater                   |
|   |   | - - - | Ex CIPP Lined or PVC Wastewater |



Sheet No.  
Overview





# Neighborhood Review



# Peaceful, Relaxed



# Places of lush beauty





# 'More Complete' Streets, Amenities



**'Less Complete', limited amenities**



Some well defined, more complete





# Streets that aren't well defined



# Interesting Details?!





# Unusual Intersections





# Unusual Intersections



# Inconsistent Sidewalks



# Worn Asphalt, Water Erosion



# Significant Ponding



# How well do the streets work?





# Do the streets work for everyone?

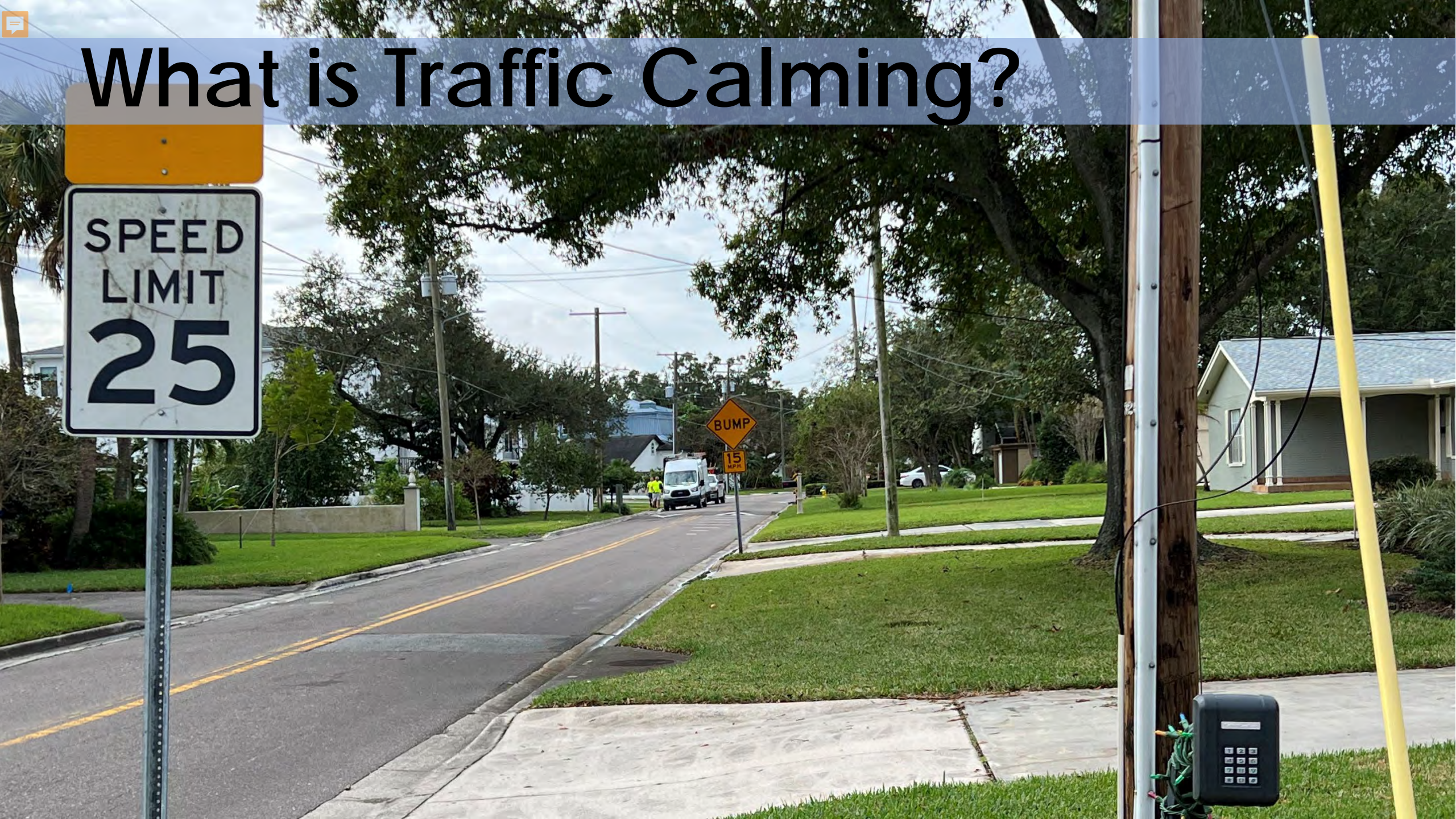




# Corridor / Neighborhood Relationship



# What is Traffic Calming?

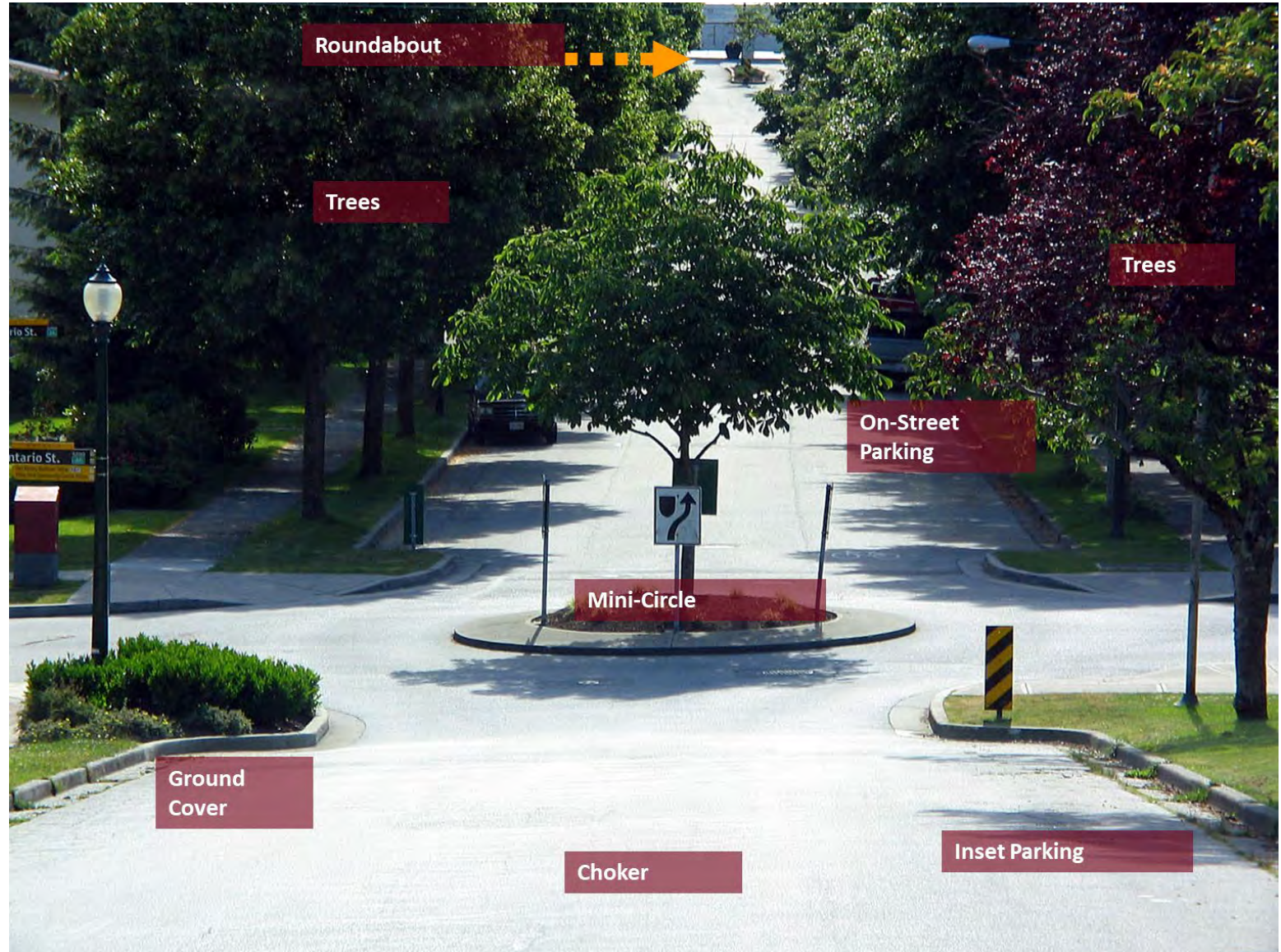


# What is Traffic Calming?

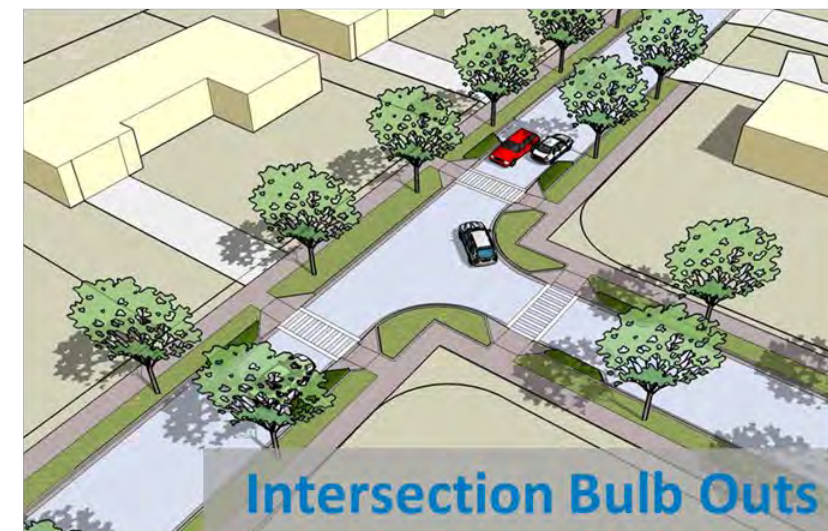
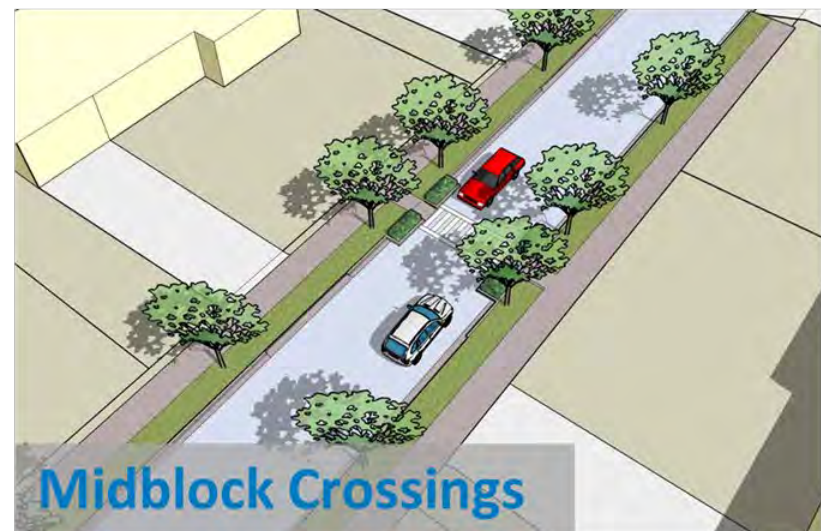
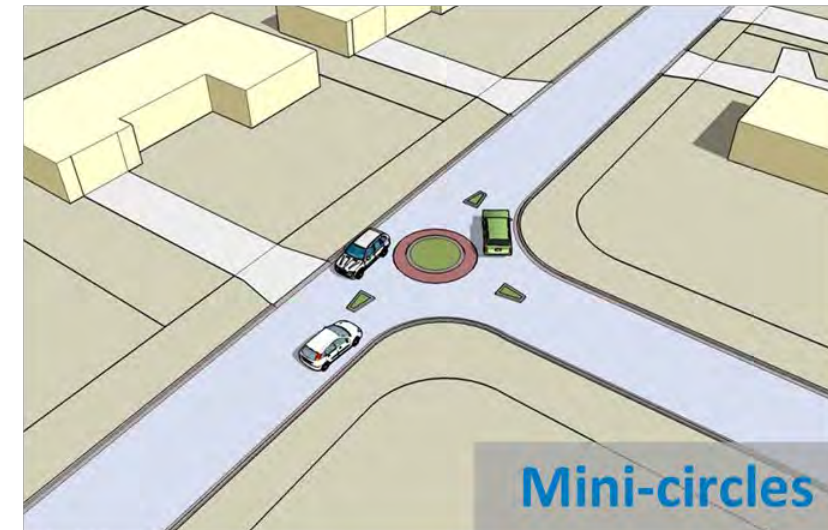
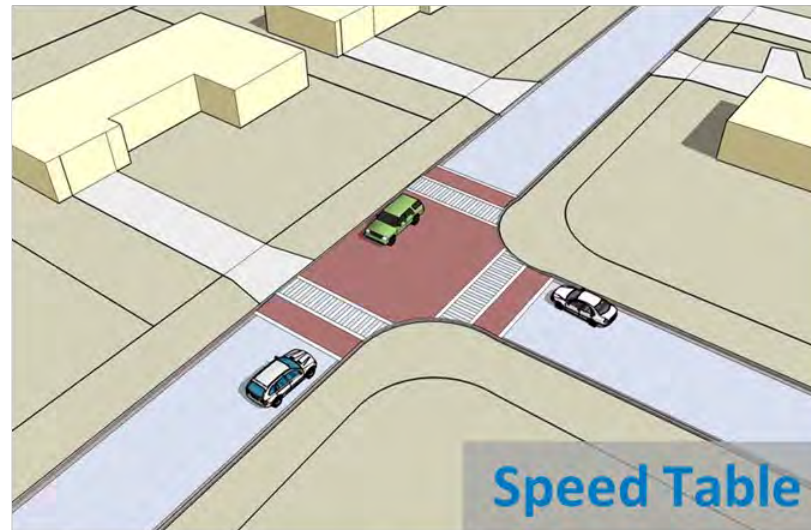
Traffic Calming is the use of design elements that promote slower driving, while adding character to the community and a safer environment for walking, cycling and driving.

Traffic Calming encourages driving habits on the terms of the neighborhood.

Auto access is maintained, but balanced with the needs of other modes of transportation and ages groups.



# What are the Techniques?



# What is Traffic Calming?



Ridgewood Park,  
Tampa, FL

# Neighborhood Streets and Intersections

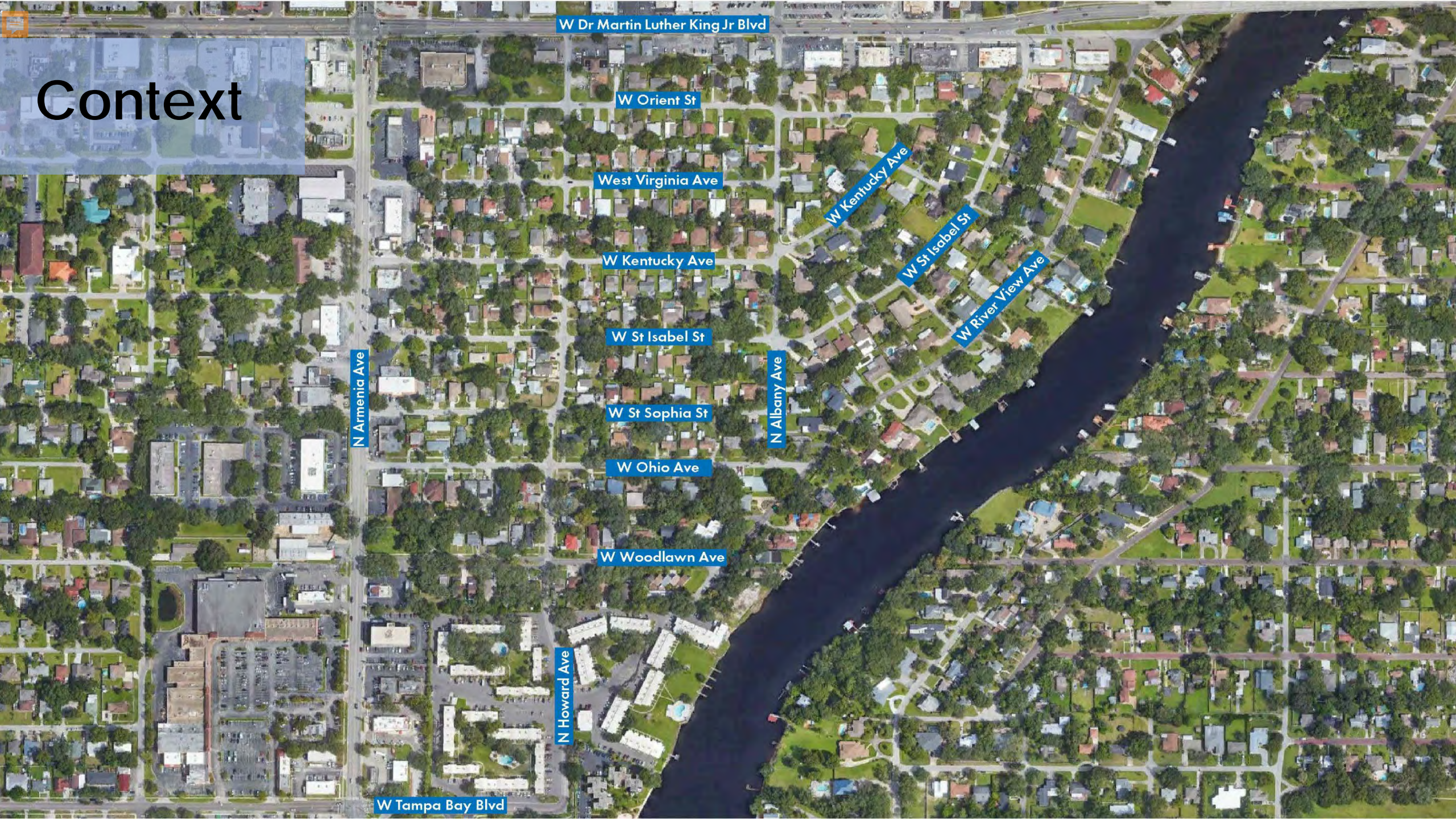


# Neighborhood Streets and Intersections





# Context



W Dr Martin Luther King Jr Blvd

W Orient St

West Virginia Ave

W Kentucky Ave

W St Isabel St

W St Sophia St

W Ohio Ave

W Woodlawn Ave

N Armenia Ave

N Albany Ave

N Howard Ave

W Tampa Bay Blvd

W Kentucky Ave

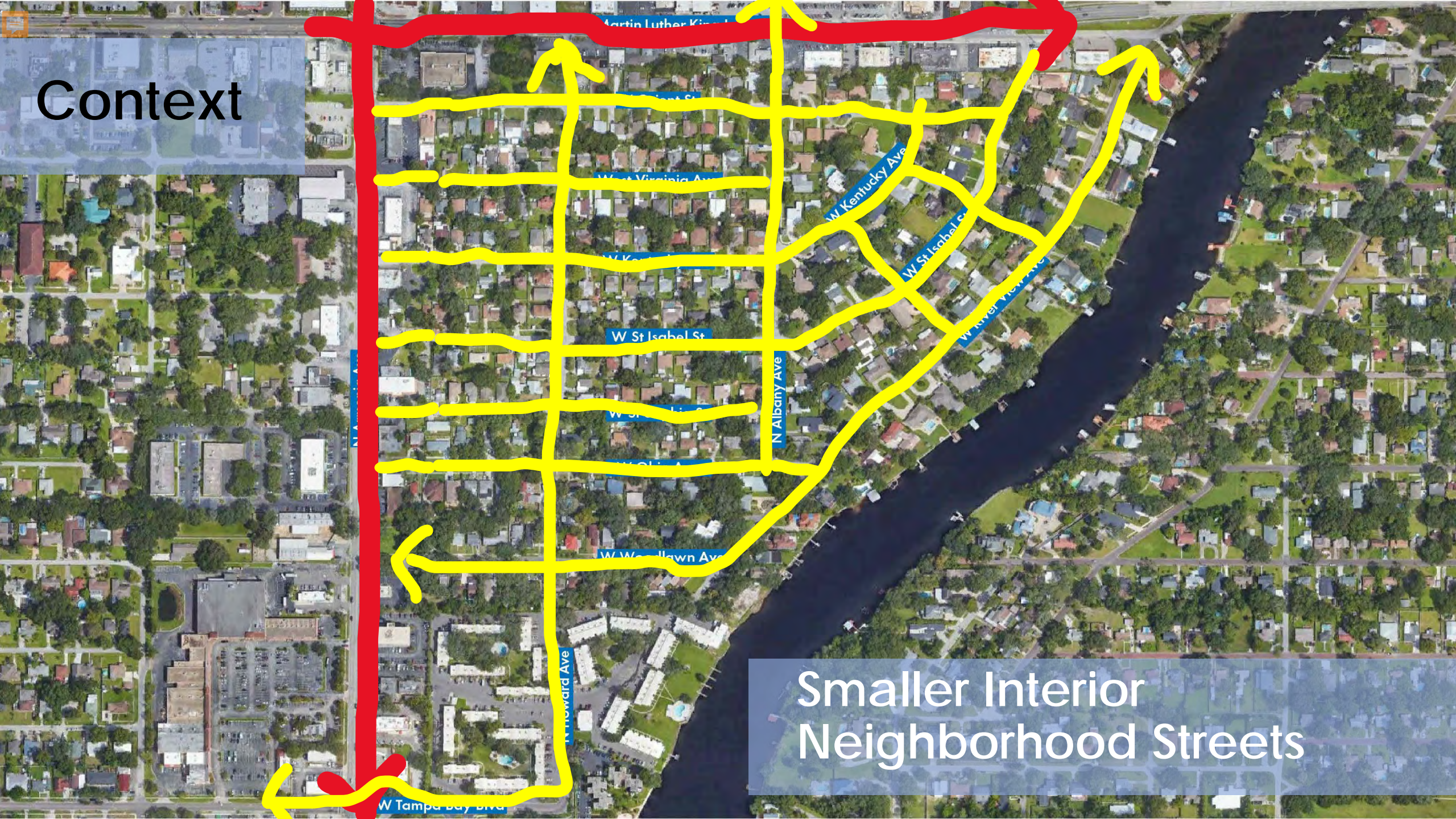
W St Isabel St

W River View Ave



Context

Large Perimeter  
Commercial Arterial Roads



Context

Smaller Interior  
Neighborhood Streets



Context

N. River View Ave Creates Special Intersections via Grid

Martin Luther King Jr. Blvd

W 1st St

W 2nd St

W 3rd St

W 4th St

W 5th St

W 6th St

W 7th St

W 8th St

W 9th St

W 10th St

W 11th St

W 12th St

W 13th St

W 14th St

W 15th St

W 16th St

W Kentucky Ave

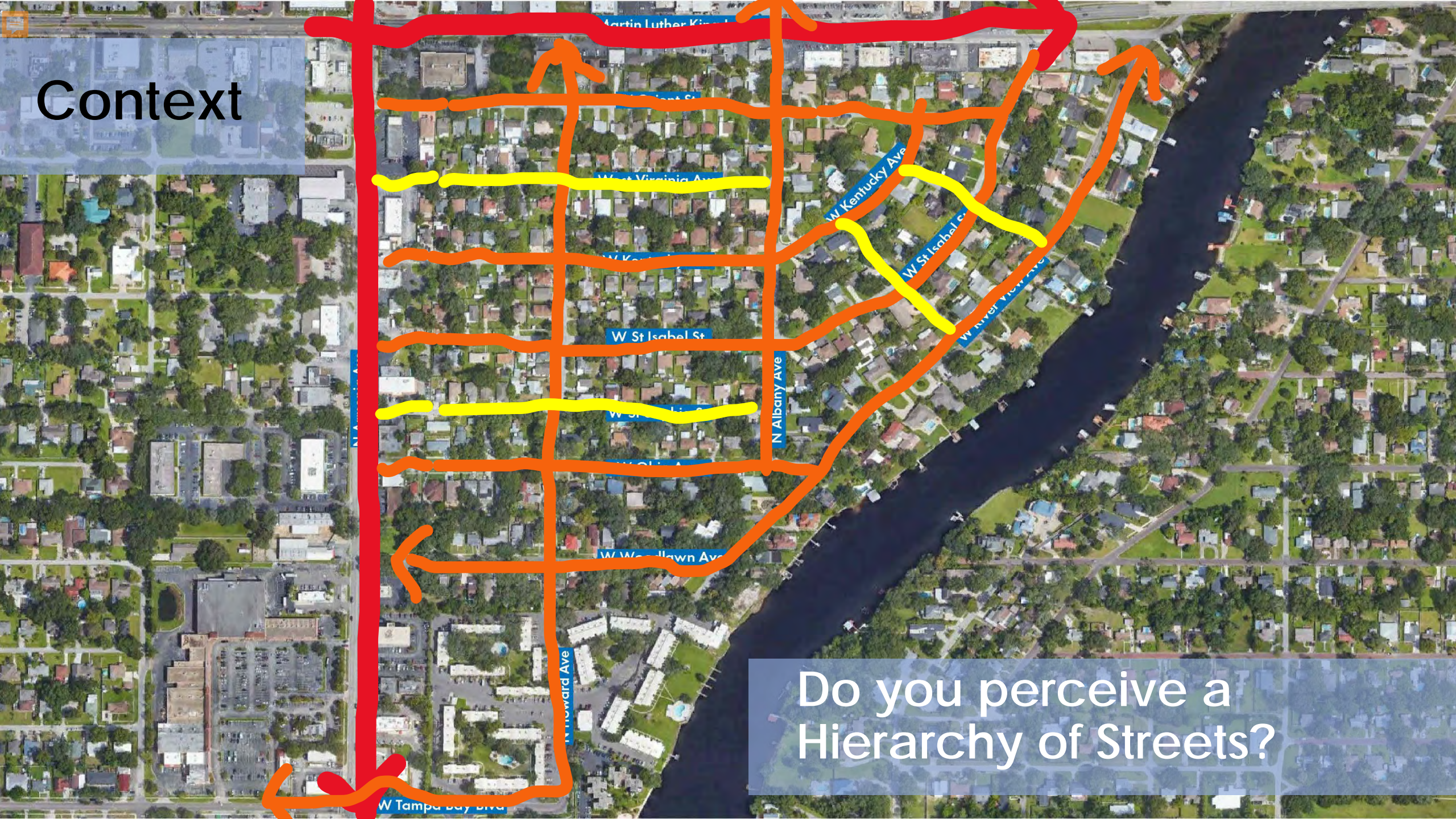
W St Isabel Ct

W River View Ave

N Albany Ave

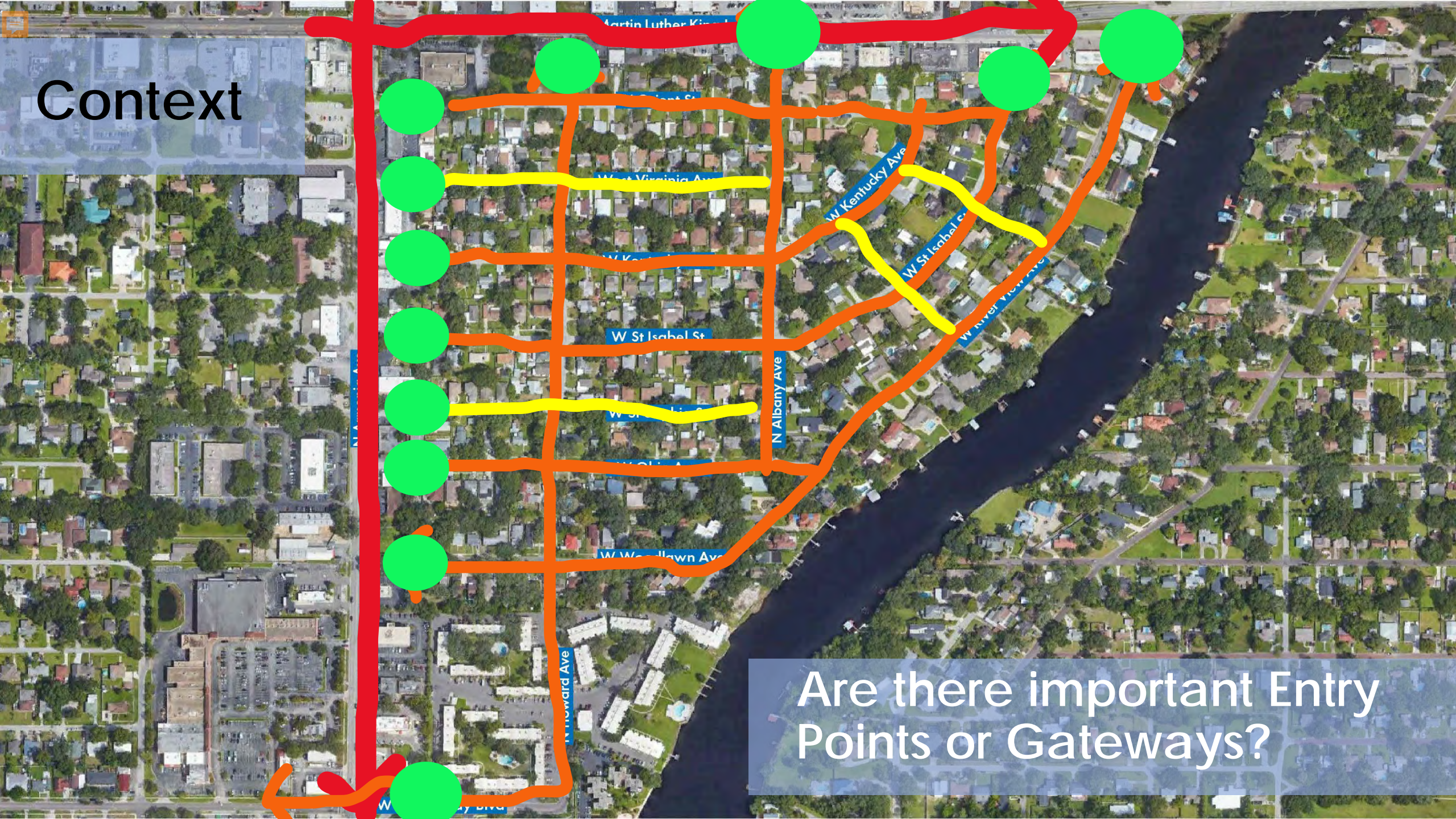
N Toward Ave

W Tampa Bay Blvd



Context

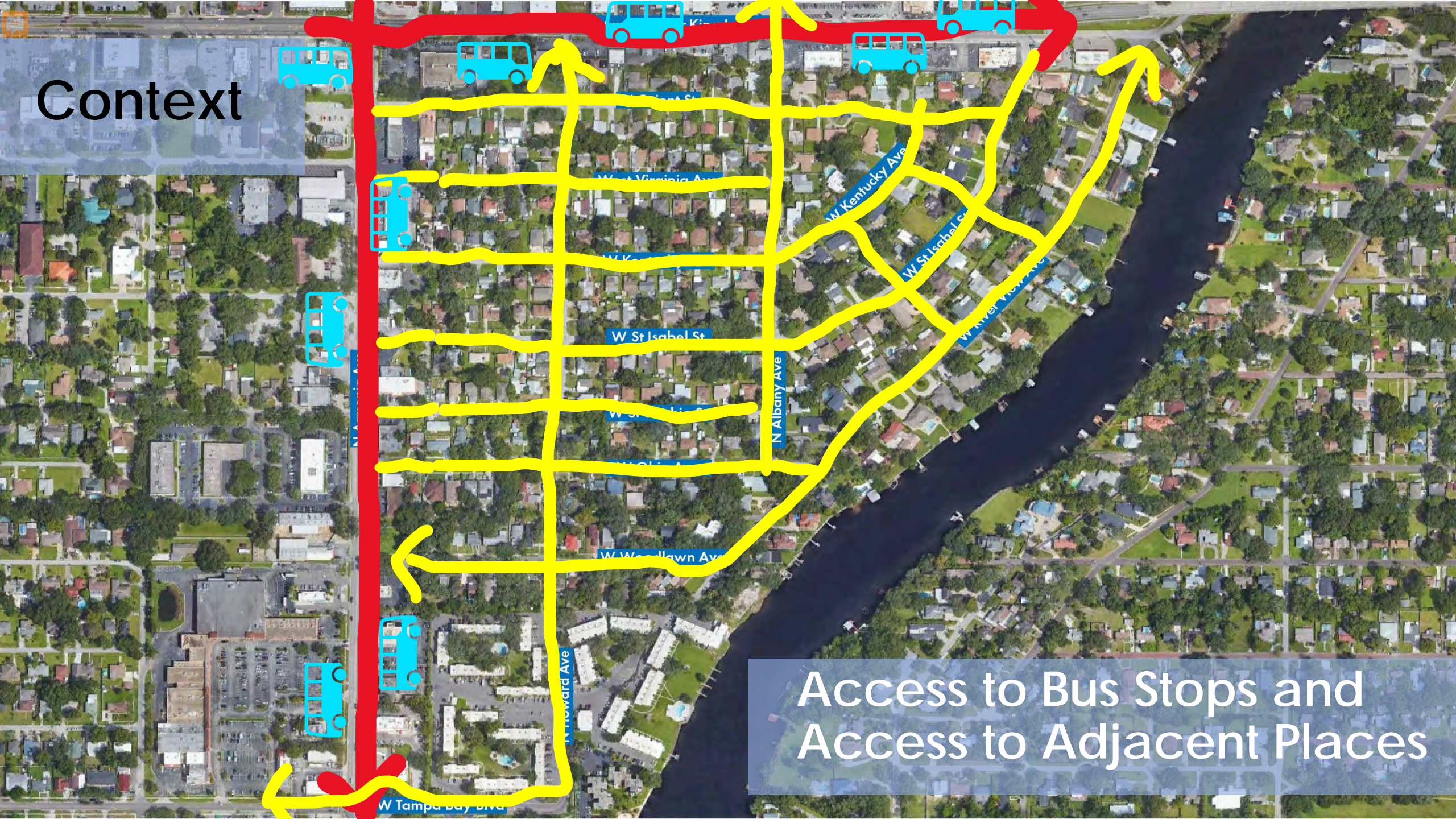
Do you perceive a Hierarchy of Streets?



Context

Are there important Entry Points or Gateways?

Context



Access to Bus Stops and  
Access to Adjacent Places

# Context



How do Automobiles Drive around the Neighborhood?



A photograph of a residential street with houses, trees, and a stop sign. The street is paved and has a curb on the left side. There are several trees and bushes along the street. A stop sign is visible on the left side of the road. The sky is blue with some clouds.

# What are your ideas & observations?

## Input Stations:

- Roadway and Drainage Trouble Spots
  - Pedestrian and Bicycle Access
- Cut Through Routes and Traffic Calming
  - Other Neighborhood Street Needs
    - Community Wiki-Map



# Join us on Feb 4<sup>th</sup> at 10AM - Noon

## Walking Tour with Residents Meet at St. Isabel / N. Albany

